



POWER PLANT - ENGINE - INCORPORATE A FUMESAL BRACKET TO PROVIDE ADDITIONAL STRENGTH -
4 - MOD.ENG-71-0052

Printed in Great Britain

1. Planning Information

A. Effectivity

- (1) Aircraft: Airbus A320
- (2) Engine: V2500-A1 Engine, Serial No.V0014 through V0106.

B. Reason

(1) Condition

An invalid fire-proof may take place on the Fumeseal during a fire because of possible buckling of the Bifurcation Panel and the Fumeseal flange.

The cause of this condition is due to insufficient strength for the installation of Fumeseal on the Bifurcation Panel.

(2) Background

This condition has been noted during a review for the existing design of the Fumeseal that is not compatible with the tested design.

A review for the existing configuration has revealed that additional Fumeseal Brackets will increase the strength for the installation of Fumeseal on the Bifurcation Panel.

(3) Objective

The changes in configuration recommended in this Service Bulletin are intended to maintain engine reliability.

(4) Substantiation

Substantiation test is not required.

(5) Effect of Bulletin on workshop procedures:

V2500-ENG-71-0052



SERVICE BULLETIN

Removal/Installation	Not affected
Disassembly/Assembly	Not affected
Cleaning	Not affected
Inspection/Check	Not affected
Repair	Not affected
Testing	Not affected

(6) Supplemental Information

None

C. Description

(1) The changes introduced by this Service Bulletin are as follows:

- (a) Additional Fumeseal Brackets are installed to the Bifurcation Panel to increase strength for the installation of Fumeseal in the Bifurcation Panel (See Figure 1).

(2) New Fumeseal Brackets will be available for future replacement purposes.

D. Approval

The Part Number changes and/or Part Modification described in Sections 2 and 3 of this Service Bulletin have been shown to comply with the applicable Federal Aviation Regulation and are FAA-APPROVED for the Engine Model listed.

E. Compliance

Category Code 4

Accomplish at the first visit of an engine or module to a maintenance base capable of compliance with the accomplishment instructions regardless of the planned maintenance action or the reason for engine removal.

F. Manpower

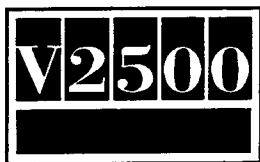
Estimated Manhours to incorporate the full intent of this Bulletin

Venue	Estimated Manhours
-------	--------------------

(1) In service

- (a) To gain access
- (b) To embody
- (c) To return engine to flyable
status TOTAL: 28 MINS

V2500-ENG-71-0052



SERVICE BULLETIN

- (2) At overhaul Not applicable

G. Material - Price and Availability

- (1) Modification kit is not required. Parts supplied as single line items.
- (2) See Material Information section for prices and availability of future spares.

H. Tooling - Price and Availability

Special tools are not required to accomplish this Service Bulletin.

I. Weight and Balance

- (1) Weight change None
- (2) Moment arm No effect
- (3) Datum Engine front mount centerline
(Powerplant station P.P.S.100)

J. Electrical Load Data

This Service Bulletin has no effect on the aircraft electrical load.

K. References

- (1) Internal Reference No.

EC89VJ041
- (2) Other References

A320 Aircraft Maintenance Manual, 71-13-00, Maintenance Practices,
78-32-00, Maintenance Practices and 70-23-11, Torque Tightening
Technique.

L. Other Publications Affected

- (1) V2500 Power Plant Illustrated Parts Catalog, Chapter/Section 71-51-44.
- (2) V2500 Engine Illustrated Parts Catalog, Chapter/Section 71-51-44.
- (3) V2500 Engine Manual, 72-00-32, Removal-02 and Installation-04.

V2500-ENG-71-0052



2. Accomplishment Instructions

A. Pre-requisite Instructions

- (1) Open the Fan Cowls. (Refer to Aircraft Maintenance Manual, 71-13-00, Maintenance Practices, TASK 71-13-00-010-010).
- (2) Open the Thrust Reverser Halves. (Refer to Aircraft Maintenance Manual, 78-32-00, Maintenance Practices, TASK 78-32-00-010-010).

B. Fitment Instructions

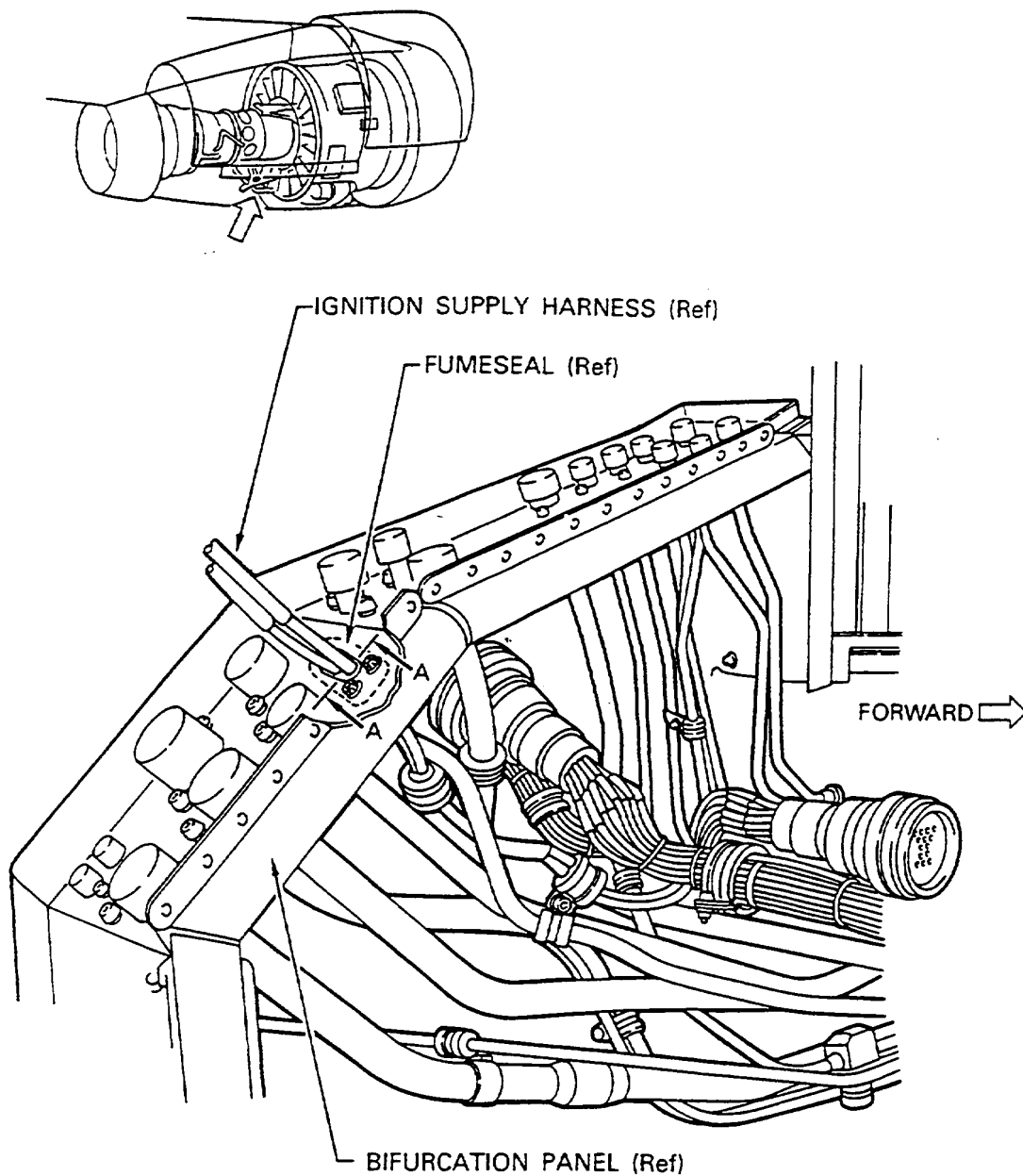
- (1) Remove the four 4W0001, Nuts, and the four 4W0104, Bolts from the Fumeseal and the Bifurcation Panel. (Refer to Figure 1).
- (2) Install the two additional 5A0368, Fumeseal Brackets to the opposite side of the Fumeseal on the Bifurcation Panel. (Refer to Figure 1).
- (3) Install the four 4W0104, and the four 4W0001, Nuts, to the two 5A0368, Fumeseal Brackets, and the Fumeseal on the Bifurcation Panel. (Refer to Figure 1).
- (4) Tighten the four 4W0001, Nuts on the four 4W0104, Bolts with a torque of 36 - 40 lbfin (4,07 - 4,52 Nm). (Refer to Figure 1, and Aircraft Maintenance Manual, 70-23-11, Torque Tightening Technique).

C. Post-requisite Instructions

- (1) Close the Thrust Reverser Halves. (Refer to Aircraft Maintenance Manual, 78-32-00, Maintenance Practices, TASK 78-32-00-410-010).
- (2) Close the Fan Cowls. (Refer to Aircraft Maintenance Manual, 71-13-00, Maintenance Practices, TASK 71-13-00-410-010).

D. Recording Instructions

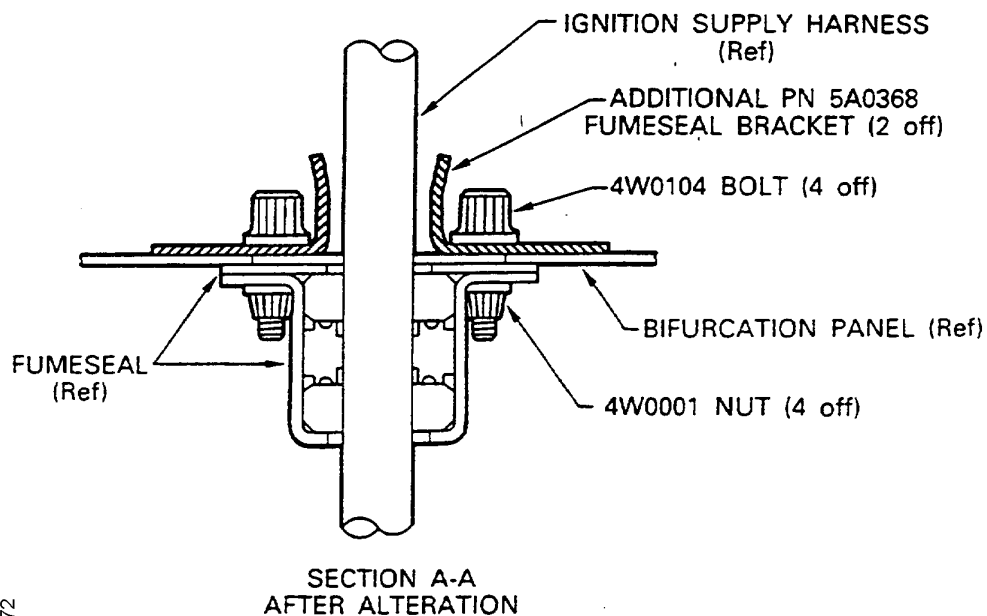
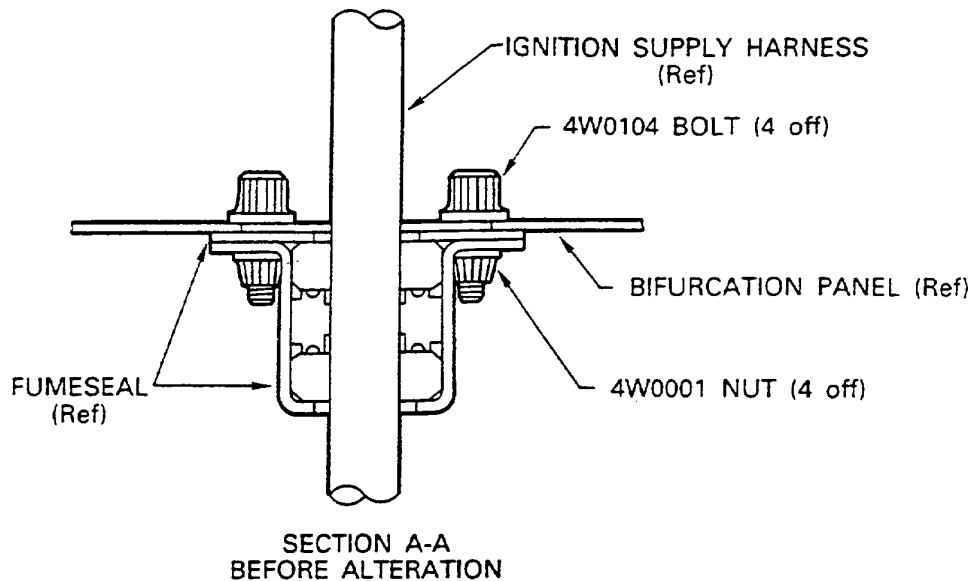
- (1) A record of accomplishment is necessary.



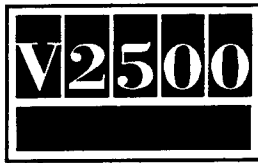
ded0000171

Fumeseal Installation on the Bifurcation Panel
Fig.1 Sheet 1 of 2

V2500-ENG-71-0052



Fumesal Installation on the Bifurcation Panel
Fig.1 Sheet 2 of 2



SERVICE BULLETIN

3. Material Information

New Part No. (ATA No.)	Qty	Est'd Unit Price (\$)	Keyword	Old Part No. (IPC No.)	Instructions Disposition
------------------------------	-----	-----------------------------	---------	------------------------------	-----------------------------

Applicability: For each V2500 Engine to incorporate this Bulletin.

A. Kits associated with this Bulletin:

None

B. Parts affected by this Bulletin:

5A0368 (71-51-44)	2	-	Bracket, Fumeseal	- (01-034)	(A)(1D)
----------------------	---	---	----------------------	---------------	---------

C. Instruction/Disposition Code Statements:

(A) New part will be available approximately December 1989.
(1D) Additional part.

NOTE: The estimated 1990 Unit Prices shown are provided for planning purposes only and do not constitute a firm quotation. Consult IAE Price Catalog or Contact IAE's Spare Parts Sales Department for information concerning firm prices.

V2500-ENG-71-0052

