

SERVICE BULLETIN

ENGINE — HIGH PRESSURE (HP) COMPRESSOR CASES — SIMPLIFIED
REAR INNER AND OUTER CASES

MODEL APPLICATION

V2522-A5, V2524-A5, V2527-A5, V2527E-A5, V2527M-A5, V2530-A5, V2533-A5

BULLETIN ISSUE SEQUENCE

V2500 Series 72-0627

ATA NUMBER

72-41-00

IAE PROPRIETARY INFORMATION

This document is the property of International Aero Engines (IAE). You may not possess, use, copy or disclose this document or any information in it, for any purpose, including without limitation to design, manufacture, or repair parts, or obtain FAA or other government approval to do so, without IAE's express written permission. Neither receipt nor possession of this document alone, from any source, constitutes such permission. Possession, use, copying or disclosure by anyone without IAE's express written permission is not authorized and may result in criminal and/or civil liability.

Not subject to the EAR per 15 C.F.R. Chapter 1, Part 734.3(b)(3).

Compliance Category

7

September 22/14

V2500-ENG-72-0627

Page 1 of 21

Summary

The purpose of this Service Bulletin is to provide High Pressure (HP) compressor rear inner and outer cases with a simplified design. The new design deletes features and components made redundant by previous modifications. The deletion of the HP compressor Stages 8 to 11 heatshields has given the opportunity to simplify the design of the HP compressor rear inner and outer cases.

Planning Information

Effectivity Data

Engine Models Applicable

V2522-A5, V2524-A5, V2527M-A5, V2527-A5, V2527E-A5, V2530-A5, V2533-A5
Engine Serial Nos. V10001 thru V13190

V2522-A5, V2524-A5, V2527M-A5, V2527-A5, V2527E-A5, V2530-A5, V2533-A5 that
HAVE incorporated Reference 5, Service Bulletin V2500-ENG-72-0565
Engine Serial Nos. V15001 thru V16391
Engine Serial No. V16523, V16525, V16527, V16529, V16531, V16533, V16535, 16537,
V16539

NOTE: For Engines with a Serial Number between V10001 and V13190 this Service Bulletin is only applicable if Reference 5, Service Bulletin V2500-ENG-72-0565 is incorporated and the Installation Arrangement Number (IAN) on the Engine Identification Plate has been changed from AQ to SQ.

Concurrent Requirements

The Service Bulletin that follows must be incorporated before or at the same time as this one: Reference 4, Service Bulletin No. V2500-ENG-72-0477.

Reason

1. Condition: This Service Bulletin introduces High Pressure (HP) compressor rear inner and outer cases with a simplified design. The new design deletes features and components made redundant by previous modifications.
2. Background: The deletion of the HP compressor Stages 8 to 11 heatshields has given the opportunity to simplify the design of the HP compressor rear inner and outer cases.
3. Objective: Incorporation of this Service Bulletin is to introduce an optimized design of the HP compressor rear inner and outer cases.
4. Substantiation: The changes introduced by this Service Bulletin were the subject of satisfactory engineering analysis. This Service Bulletin complies with the applicable engine certification basis.
5. Effects of Bulletin on:
 - Operation: Not affected.
 - Maintenance: Not affected.
 - Overhaul: Affected (Refer to Other Publications Affected).
 - Repair Schemes: Affected (Refer to Other Publications Affected).
 - Interchangeability: Affected (Refer to Concurrent Requirements).
 - Fits and Clearances: Not affected.

6. Supplemental Information

None.

Description

This Service Bulletin introduces HP compressor rear inner and outer cases with a simplified design.

The changes are as follows:

1. Rear inner cases:

- A. The riveted dowel location feature is replaced by a standard shoulder pin.

NOTE: The dowel positions and hole patterns are designed as baulking features to prevent intermixing of old and new standards and to make sure that the cases cannot be installed out of build sequence or in the incorrect direction.

- B. The D-head flange bolts are replaced by standard bi-hex bolts and the captive nuts are replaced by bi-hex self lock nuts. On Stages 10 to 12, with higher operating temperatures, the bolts are made from Waspaloy.

- C. Expansion washers are introduced at Stages 10 to 12 for the different thermal expansion coefficient of the cases and the bolts.

- D. Obsolete machining features required for the HP compressor heat shields are deleted.

- E. The seal ring which separates the bleed air chambers between the rear inner cases and the rear outer case is moved axially rearwards and installed between the Stage 10 and Stage 11 cases.

2. Rear outer case:

- A. The middle seal land is extended rearwards to accommodate the relocation of the seal ring.

Compliance

Category 7

Accomplish when supply of superseded parts has been depleted.

Approval Data

The part number changes and/or part modifications specified in the Accomplishment Instructions and Material Information sections of this Service Bulletin have been shown to comply with the applicable Federal Aviation Regulations and are FAA-APPROVED for the engine model(s) given.

Manpower

1. In Service

..... Not Applicable.

2. At Overhaul

.....Applicable (hours not affected).

Weight and Balance

1. Weight Change
Minus 5.4 lb (2.45 kg).
2. Moment Arm
24.0 in. (610 mm) rearward of datum.
3. Datum
Engine Front Mount Centerline (Power Plant Station (PPS) 100)

Electrical Load Data

This Service Bulletin has no effect on the aircraft electrical load.

Software Accomplishment Summary

Not Applicable.

References

NOTE: In 2014 IAE converted the V2500 Technical Publications to a new system. As a result of the conversion, some manuals were consolidated. All manuals received new P&W part numbers. To facilitate the use of this Service Bulletin, a Technical Publications conversion table is provided in the Appendix.

1. ATA Locator — 72-41-00, 72-41-21 and 72-41-23.
2. V2500-A5 Series Illustrated Parts Catalog, P&W Ref. PN 2A4428, Chapter/Section 72-41-00, 72-41-21 and 72-41-23.
3. V2500 A1/A5 Series Engine Manual, P&W Ref. PN 2A4407, Chapter/Section 72-00-40, 72-00-41, 72-41-00, 72-41-20 and 72-41-23.
4. IAE V2500 Service Bulletin V2500-ENG-72-0477 (Engine — High Pressure (HP) Compressor Ring Cases — Deletion Of Stage 8 To 11 Heatshields).
5. IAE V2500 Service Bulletin V2500-ENG-72-0565 (Engine — Provide The Requirements For Modification To The V2500 SelectOne™ Retrofit Standard).

Other Publications Affected

NOTE: In 2014 IAE converted the V2500 Technical Publications to a new system. As a result of the conversion, some manuals were consolidated. All manuals received new P&W part numbers. To facilitate the use of this Service Bulletin, a Technical Publications conversion table is provided in the Appendix.

1. V2500-A5 Series Illustrated Parts Catalog, P&W Ref. PN 2A4428, Chapter/Section 72-41-00, 72-41-21 and 72-41-23.
2. V2500 A1/A5 Series Engine Manual, P&W Ref. PN 2A4407, Chapter/Section 72-41-00, 72-41-20 and 72-41-23 Cleaning, Inspection and Repair, to add the new part.

Interchangeability of Parts

Refer to Material Information Section Instruction/Disposition Codes.

Information in the Appendix

Alternate Accomplishment Instructions (No)

Progression Charts (No)

Added Data (Yes)

Revision to Table of Limits (No)

Inspection Procedures (No)

Material Information

Material — Price and Availability

1. There is no kit provided to do this Service Bulletin.
2. Part availability information is provided in material data Instructions — Disposition.

Industry Support Program

Not Applicable.

The material data that follows is for each engine.

For V2522-A5, V2524-A5, V2527-A5, V2527E-A5, V2527M-A5, V2530-A5, V2533-A5 Engines:

New PN	Qty	Estimate of Unit Price (\$)	Keyword	Old PN	Instructions — Disposition
AS20624	38	6.47	.NUT	AS27822 (72-41-00-01-570)	(A)(C2)(J) (S1)(S2)
AS60110	38	23.10	.BOLT	BLT5309 (72-41-00-01-572)	(A)(C2)(J) (S1)(S2)
AS20624	47	6.47	.NUT	AS27822 (72-41-00-01-590)	(A)(C2)(H) (S1)(S2)
AS60110	47	23.10	.BOLT	BLT5309 (72-41-00-01-592)	(A)(C2)(H) (S1)(S2)
BRR15538	47	1.84	.WASHER	4W2621 (72-41-00-01-606)	(A)(C2)(I) (S1)(S2)
AS20624	47	6.47	.NUT	AS27822 (72-41-00-01-610)	(A)(C2)(H) (S1)(S2)
AS62910	47	20.10	.BOLT	BLT5309 (72-41-00-01-612)	(A)(C2)(H) (S1)(S2)
BRR15538	47	1.84	.WASHER	AS12943 (72-41-00-01-625)	(A)(C2)(I) (S1)(S2)
AS20624	47	6.47	.NUT	AS27822 (72-41-00-01-630)	(A)(C2)(H) (S1)(S2)
AS62910	47	20.10	.BOLT	BLT5309 (72-41-00-01-632)	(A)(C2)(H) (S1)(S2)
AS20624 (72-41-00-1-642)	47	6.47	.NUT		(A) (S2)
AS62910	47	20.10	.BOLT	AS60112 (72-41-00-01-644)	(A)(C2) (S1)(S2)
BRR15538	47	1.84	.WASHER	6A7421 (72-41-00-01-646)	(A)(C2) (S1)(S2)

New PN	Qty	Estimate of Unit Price (\$)	Keyword	Old PN	Instructions — Disposition
6B1430	1	30,000.00	.HIGH PRESSURE (HP) COMPRESSOR STAGE 7 ROTOR PATH CASE ASSEMBLY	6A7577 (72-41-21-03-300)	(A)(C2) (S2)(S3)
AS44803 (72-41-21-3-313)	1	19.70	..PIN		(A)(C)
6B1432	1	31,649.00	.HIGH PRESSURE (HP) COMPRESSOR STAGE 8 ROTOR PATH CASE ASSEMBLY	6A7578 (72-41-21-03-500)	(A)(C2) (S2)(S3)
AS44803 (72-41-21-3-568)	1	19.70	..PIN		(A)(D)
6B1433	1	33,266.00	.HIGH PRESSURE (HP) COMPRESSOR STAGE 9 ROTOR PATH CASE ASSEMBLY	6A6549 (72-41-21-03-650)	(A)(C2) (S2)(S3)
AS44803 (72-41-21-3-677)	1	19.70	..PIN		(A)(E)
6B1434	1	46,102.00	.HIGH PRESSURE (HP) COMPRESSOR STAGE 10 ROTOR PATH CASE ASSEMBLY	6A6550 (72-41-21-03-800)	(A)(C2) (S2)(S3)
AS44803 (72-41-21-3-868)	1	19.70	..PIN		(A)(F)

New PN	Qty	Estimate of Unit Price (\$)	Keyword	Old PN	Instructions — Disposition
6B1435	1	95,111.00	.HIGH PRESSURE (HP) COMPRESSOR STAGE 11 ROTOR PATH CASE ASSEMBLY	6A7531 (72-41-21-04-350)	(A)(C2) (S2)(S3)
AS44803 (72-41-21-4-380)	1	19.70	..PIN		(A)(G)
6A5703 (72-41-21-4-420)	1	4,028.00	.RING		(A)(T) (S2)
6B1436	1	37,801.00	.HIGH PRESSURE (HP) COMPRESSOR STAGE 12 ROTOR PATH CASE ASSEMBLY	6A6552 (72-41-21-04-600)	(A)(C2) (S2)(S3)
6B1427	1	206,390.00	.HIGH PRESSURE (HP) COMPRESSOR REAR OUTER CASE ASSEMBLY	6A8162 (72-41-23-02-400)	(A)(C2) (S2)(S3)
6B1428	1		..HIGH PRESSURE (HP) COMPRESSOR REAR OUTER CASE	6A8163 (72-41-23-02-550)	(K)(L) (S2)
Redundant Parts:					
	10		.BOLT	AS60114 (72-41-00-01-564)	(B)(C2)
	10		.WASHER	AS12943 (72-41-00-01-565)	(B)(C2)
	10		.BOLT	AS60114 (72-41-00-01-584)	(B)(C2)
	10		.WASHER	AS12943 (72-41-00-01-585)	(B)(C2)

New PN	Qty	Estimate of Unit Price (\$)	Keyword	Old PN	Instructions — Disposition
	10		.NUT	4W0001 (72-41-00-01-600)	(B)(C2)
	10		.BOLT	AS60114 (72-41-00-01-604)	(B)(C2)
	10		.BOLT	AS60114 (72-41-00-01-624)	(B)(C2)
	10		..HIGH PRESSURE (HP) COMPRESSOR STAGE 7 SPACER	UP11948 (72-41-21-03-514)	(B)(C2)
	10		..HIGH PRESSURE (HP) COMPRESSOR STAGE 7 SPACER	UP11948 (72-41-21-03-814)	(B)(C2)
	20		..HIGH PRESSURE (HP) COMPRESSOR STAGE 7 SPACER	UP11948 (72-41-21-04-364)	(B)(C2)
	24		..RIVET	AS16647 (72-41-21-04-402)	(B)(C2)(L)
	1		..RING	6A5703 (72-41-21-04-406)	(C2)(T)

Instructions/Disposition Code Statements:

Parts Modification Conditions

Estimated part prices are provided when they are available at time of publication. The Estimate of Unit Price is only for planning purposes and does not constitute a firm quotation. An asterisk (*) is shown where part pricing information was unavailable. In either case, contact IAE Spares for firm quotations.

Spare Parts Availability

- (A) The new part is available.
- (B) Deleted part.
- (C2) The old part will continue to be supplied for use in other engine models.
- (C) This part is a replaceable part of the HP compressor Stage 7 rotor path assembly at ATA Chapter 72-41-21, Fig/Item No. 03-300.

- (D) This part is a replaceable part of the HP compressor Stage 8 rotor path assembly at ATA Chapter 72-41-21, Fig/Item No. 03-500.
- (E) This part is a replaceable part of the HP compressor Stage 9 rotor path assembly at ATA Chapter 72-41-21, Fig/Item No. 03-650.
- (F) This part is a replaceable part of the HP compressor Stage 10 rotor path assembly at ATA Chapter 72-41-21, Fig/Item No. 03-800.
- (G) This part is a replaceable part of the HP compressor Stage 11 rotor path assembly at ATA Chapter 72-41-21, Fig/Item No. 04-350.
- (H) The quantity of the part is increased from 37 to 47.
- (I) The quantity of the part is increased from 10 to 47.
- (J) The quantity of the part is increased from 28 to 38.
- (K) The new part is not available for sale.
- (L) The old part is not available for sale.
- (S1) The old and new parts are not interchangeable.
- (S2) The new part number has restricted installation into Installation Arrangement Number (IAN) SQ identified engines only.
- (S3) New parts must be installed as a complete set to replace the old parts, the HP compressor rear outer case (72-41-23, 02-400) can be replaced on an individual basis new for old, but it is advised to replace all parts coded (S3).
- (T) This part is transferred from ATA Chapter 72-41-21, Fig/Item No. 04-406 to ATA Chapter 72-41-21, Fig/Item No. 04-420 for configuration purposes only.

Vendor Services or Special Components/Materials

Not Applicable.

Tooling — Price and Availability

Special tools are not required to accomplish this Service Bulletin.

Reidentified Parts

Not Applicable.

Other Material Information Data

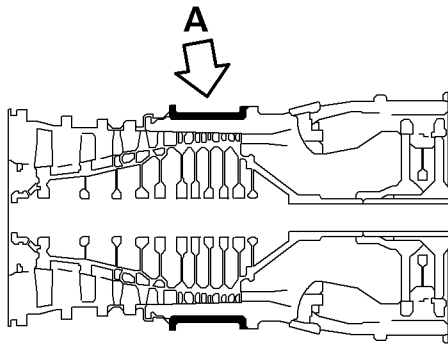
Not Applicable.

Accomplishment Instructions

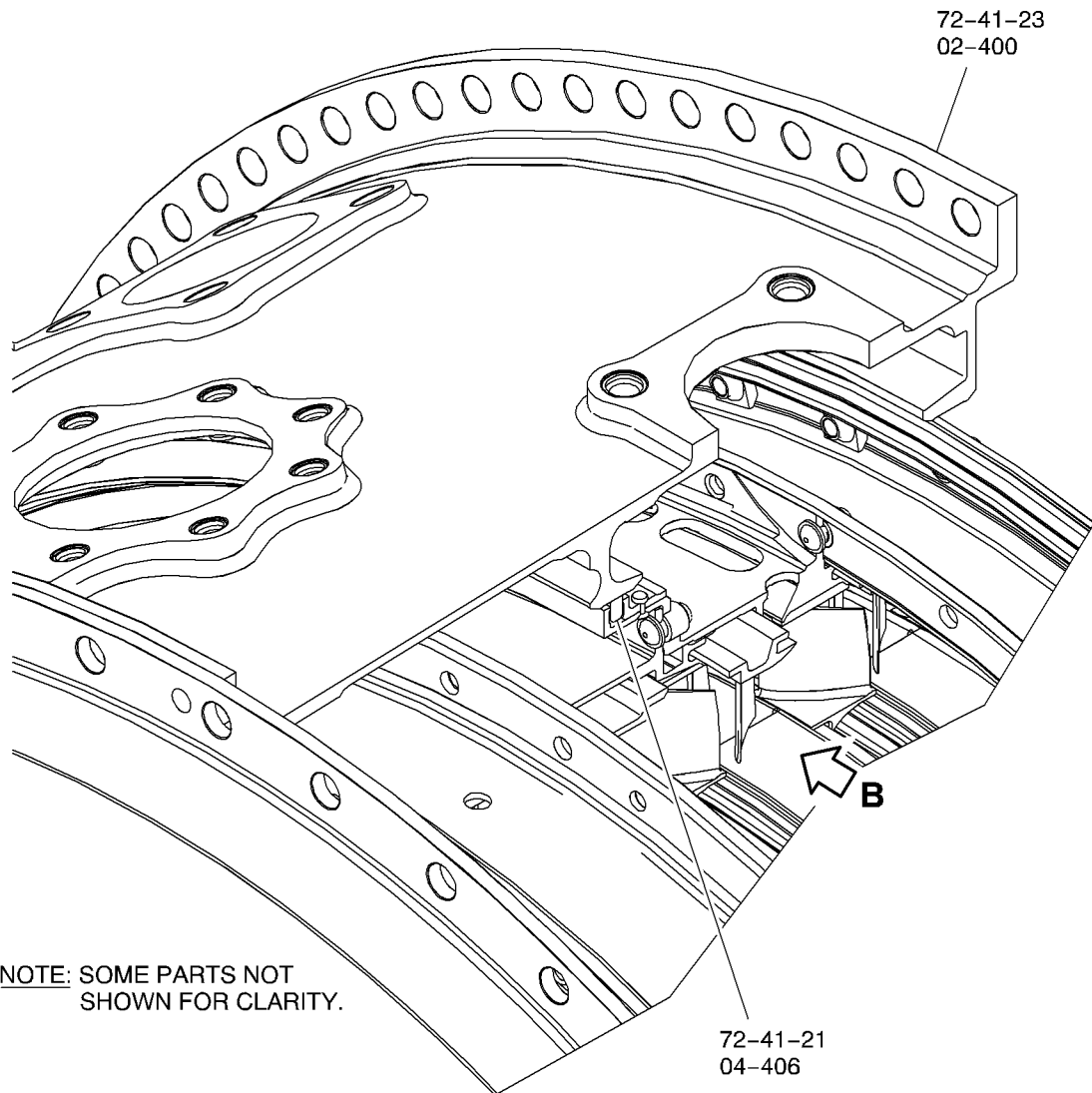
1. Rework Instructions
 - A. None.
2. Assembly Instructions
 - A. General
 - (1) Obey all the WARNINGS and CAUTIONS in the procedures that are referred to.
 - (2) Consumable Materials
 - (a) Refer to the related Manual tasks given in this instruction.
 - (3) Tools and Equipment
 - (a) Refer to the related Manual tasks given in this instruction.
 - B. Get access to the High Pressure (HP) compressor rear outer case and rear inner cases.
 - C. Remove the HP system module (Refer to the Engine Manual, Chapter 72-00-40).
 - D. Remove the HP compressor assembly (Refer to the Engine Manual, Chapter 72-00-41).
 - E. Disassemble the HP compressor assembly (Refer to the Engine Manual, Chapter 72-41-00 and to Figure 1)
 - (1) Remove the old HP compressor rear outer case assembly (72-41-23, 02-400), PN 6A8162.
 - (2) Remove the cross key location ring (72-41-21, 04-750).
 - (a) Remove the 47 old bolts (72-41-00, 01-644), PN AS60112.
 - (b) Remove the 47 old washers (72-41-00, 01-646), PN 6A7421.
 - (3) Remove the HP compressor Stage 12 rotor path case assembly (72-41-21, 04-600).
 - (a) Remove the 37 old nuts (72-41-00, 01-630), PN AS27822.
 - (b) Remove the 37 old bolts (72-41-00, 01-632), PN BLT5309.
 - (c) Remove the 10 old bolts (72-41-00, 01-624), PN AS60114.
 - (d) Remove the 10 old washers (72-41-00, 01-625), PN AS12943.
 - (e) Remove the old HP compressor Stage 12 rotor path case assembly (72-41-21, 04-600), PN 6A6552.
 - (4) Remove the HP compressor Stage 11 rotor path case assembly (72-41-21, 04-350).
 - (a) Remove the 37 old nuts (72-41-00, 01-610), PN AS27822.
 - (b) Remove the 37 old bolts (72-41-00, 01-612), PN BLT5309.
 - (c) Remove the 10 old bolts (72-41-00, 01-604), PN AS60114.
 - (d) Remove the 10 old washers (72-41-00, 01-606), PN 4W2621.

- (e) Remove the 10 old nuts (72-41-00, 01-600), PN 4W0001.
- (f) Remove the old HP compressor Stage 11 rotor path case assembly (72-41-21, 04-350), PN 6A7531.
- (5) Remove the HP compressor Stage 10 rotor path case assembly (72-41-21, 03-800).
 - (a) Remove the old ring (72-41-21, 04-406), PN 6A5703.
 - (b) Remove the 37 old nuts (72-41-00, 01-590), PN AS27822.
 - (c) Remove the 37 old bolts (72-41-00, 01-592), PN BLT5309.
 - (d) Remove the 10 old bolts (72-41-00, 01-584), PN AS60114.
 - (e) Remove the 10 old washers (72-41-00, 01-585), PN AS12943.
 - (f) Remove the old HP compressor Stage 10 rotor path case assembly (72-41-21, 03-800), PN 6A6550.
- (6) Remove the HP compressor Stage 9 rotor path case assembly (72-41-21, 03-650).
 - (a) Remove the 28 old nuts (72-41-00, 01-570), PN AS27822.
 - (b) Remove the 28 old bolts (72-41-00, 01-572), PN BLT5309.
 - (c) Remove the 10 old bolts (72-41-00, 01-564), PN AS60114.
 - (d) Remove the old HP compressor Stage 9 rotor path case assembly (72-41-21, 03-650), PN 6A6549.
- (7) Remove the old HP compressor Stage 8 rotor path case assembly (72-41-21, 03-500), PN 6A7578.
- (8) Remove the old HP compressor Stage 7 rotor path case assembly (72-41-21, 03-300), PN 6A7577.
- F. Assemble the HP compressor rear cases and vanes on to the HP compressor rotor assembly (Refer to the Engine Manual, Chapter 72-41-00 and to Figure 2).
 - (1) Install the HP compressor Stage 7 cone and rotor path assembly (72-41-21, 03-300) on to the HP compressor Stage 8 rotor path case assembly (72-41-21, 03-500).
 - (a) Install the new HP compressor Stage 7 cone and rotor path assembly (72-41-21, 03-300), PN 6B1430 to the new HP compressor Stage 8 rotor path case assembly (72-41-21, 03-500), PN 6B1432.
 - (2) Install the HP compressor Stage 9 rotor path case assembly (72-41-21, 03-650).
 - (a) Install the new HP compressor Stage 9 rotor path case assembly (72-41-21, 03-650), PN 6B1433.
 - (b) Install the 38 new bolts (72-41-00, 01-572), PN AS60110.
 - (c) Install the 38 new nuts (72-41-00, 01-570), PN AS20624.
 - (3) Install the HP compressor Stage 10 rotor path case assembly (72-41-21, 03-800).
 - (a) Install the new HP compressor Stage 10 rotor path case assembly (72-41-21, 03-800), PN 6B1434.

- (b) Install the 47 new bolts (72-41-00, 01-592), PN AS60110.
 - (c) Install the 47 new nuts (72-41-00, 01-590), PN AS20624.
 - (4) Install the new ring (72-41-21, 04-420).
 - (a) Install the new ring (72-41-21, 04-420), PN 6A5703.
 - (5) Install the HP compressor Stage 11 rotor path case assembly (72-41-21, 04-350).
 - (a) Install the new HP compressor Stage 11 rotor path case assembly (72-41-21, 04-350), PN 6B1435.
 - (b) Install the 47 new bolts (72-41-00, 01-612), PN AS62910.
 - (c) Install the 47 new expansion washers (72-42-00, 01-606), PN BRR15538.
 - (d) Install the 47 new nuts (72-41-00, 01-610), PN AS20624.
 - (6) Install the Stage 12 rotor path case assembly (72-41-21, 04-600).
 - (a) Install the new Stage 12 rotor path case assembly (72-41-21, 04-600), PN 6B1436.
 - (b) Install the 47 new bolts (72-41-00, 01-632), PN AS62910.
 - (c) Install the 47 new expansion washers (72-41-00, 01-625), PN BRR15538.
 - (d) Install the 47 new nuts (72-41-00, 01-630), PN AS20624.
 - (7) Install the cross key location ring (72-41-21, 04-750).
 - (a) Install the 47 new bolts (72-41-00, 01-644), PN AS62910.
 - (b) Install the 47 new expansion washers (72-41-00, 01-646), PN BRR15538.
 - (c) Install the 47 new nuts (72-41-00, 01-642), PN AS20624.
 - (8) Install the HP compressor rear outer case assembly (72-41-23, 02-400) on to the HP compressor rear inner cases.
 - (a) Install the new HP compressor rear outer case assembly (72-41-23, 02-400), PN 6B1427 on to the HP compressor rear inner cases.
 - G. Install the HP compressor assembly (Refer to the Engine Manual, Chapter 72-00-41).
 - H. Install the HP system module (Refer to the Engine Manual, Chapter 72-00-40).
 - I. Make sure that the work area is clean and clear of tools, equipment and other unwanted materials.
3. Recording Instructions
- A. A record of accomplishment is required.



A PRE SB
FWD



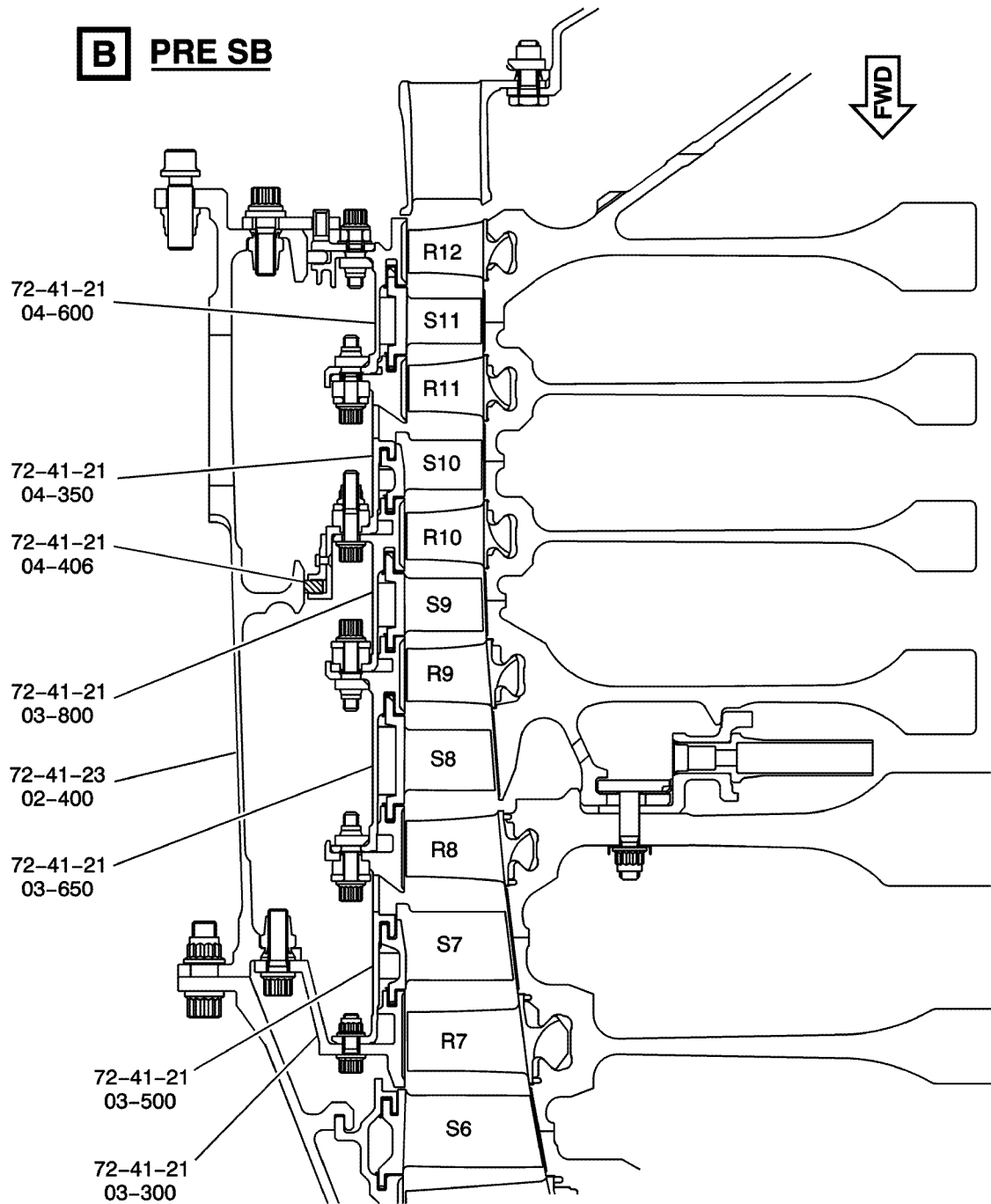
B525500

HIGH PRESSURE (HP) COMPRESSOR REAR OUTER AND REAR INNER CASES
FIGURE 1, SHEET 1

September 22/14

V2500-ENG-72-0627

Page 14



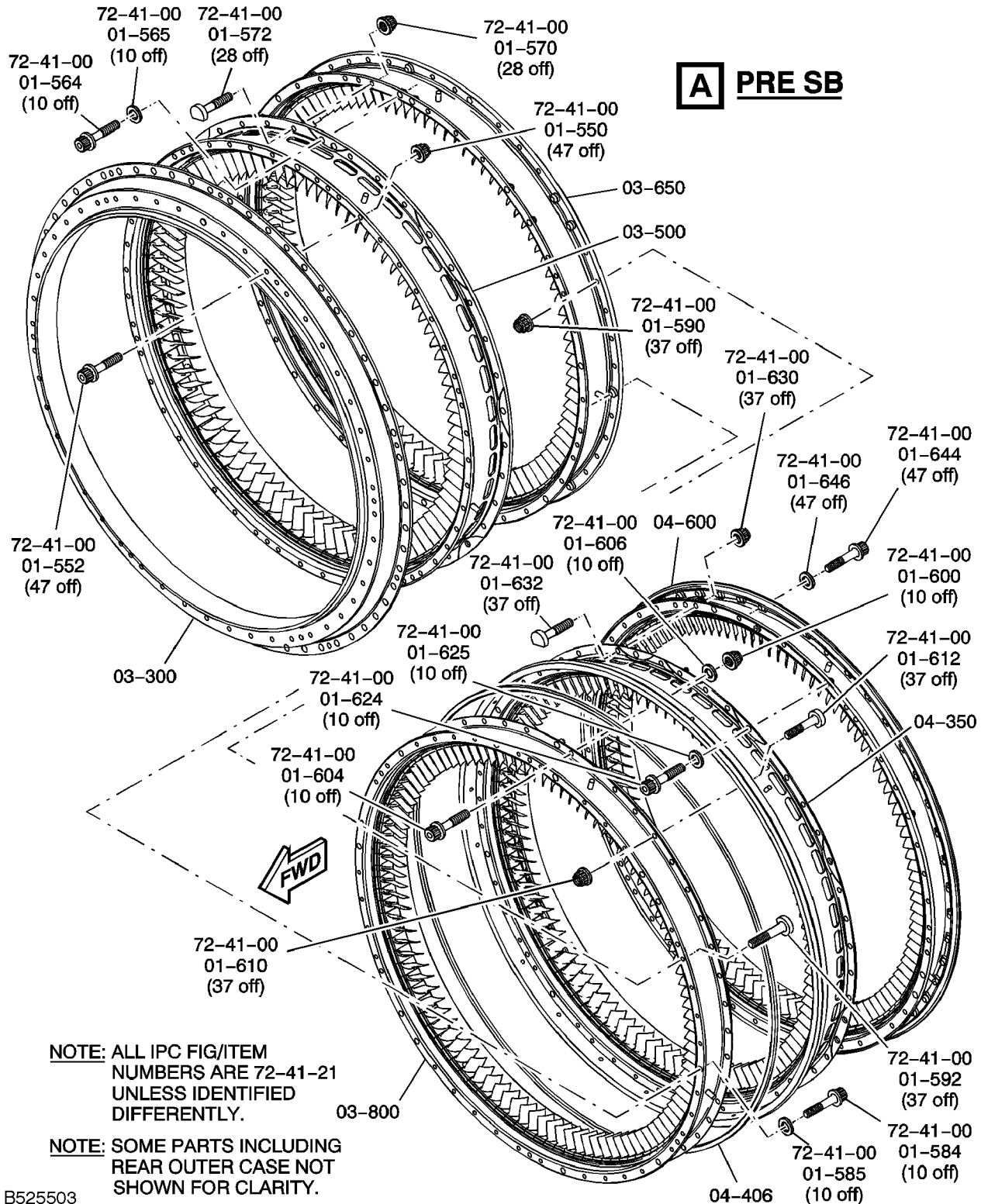
B525501

HIGH PRESSURE (HP) COMPRESSOR REAR OUTER AND REAR INNER CASES
FIGURE 1, SHEET 2

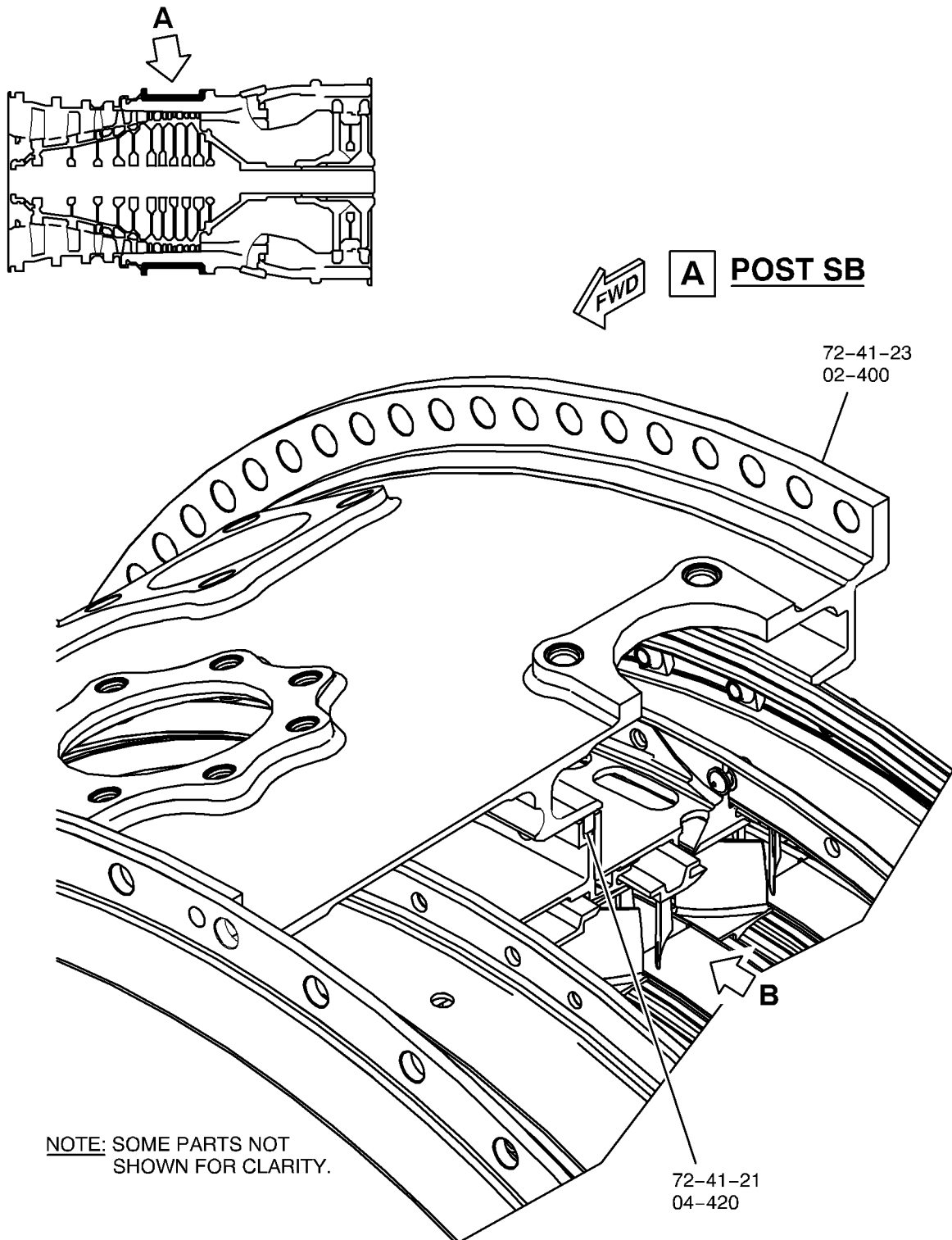
September 22/14

V2500-ENG-72-0627

Page 15



HIGH PRESSURE (HP) COMPRESSOR REAR OUTER AND REAR INNER CASES
FIGURE 1, SHEET 3



B525504

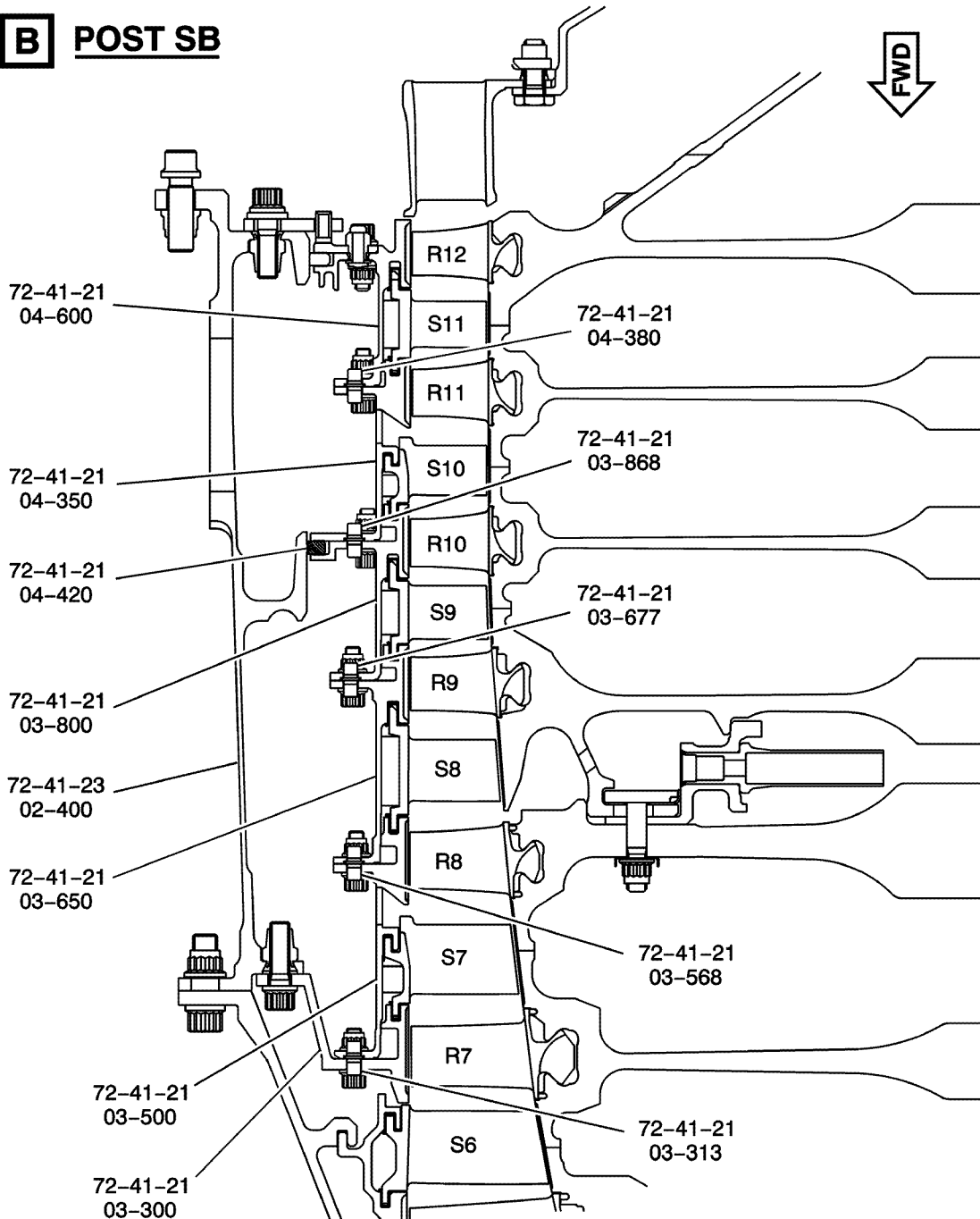
HIGH PRESSURE (HP) COMPRESSOR REAR OUTER AND REAR INNER CASES
FIGURE 2, SHEET 1

September 22/14

V2500-ENG-72-0627

Page 17

B POST SB



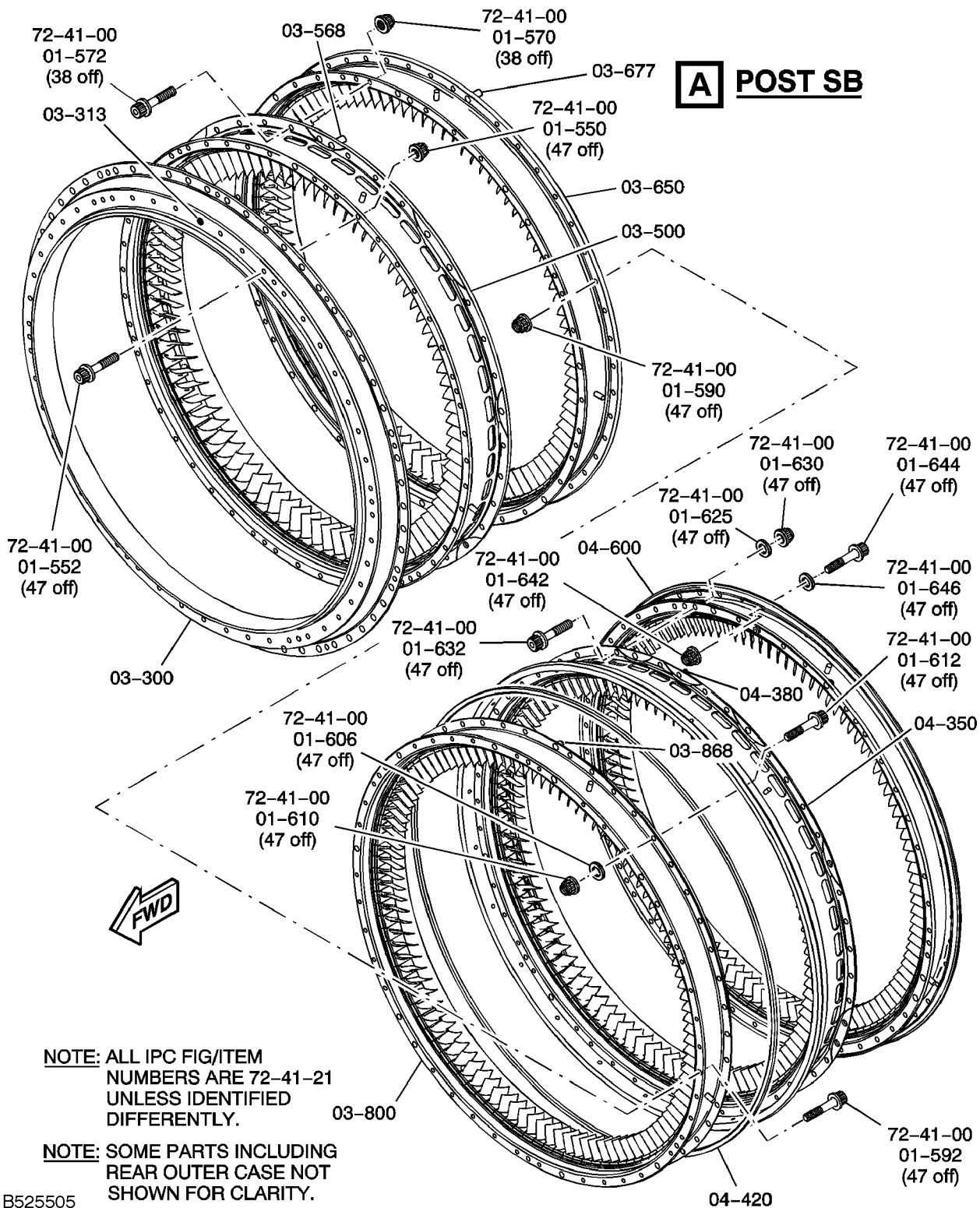
B525502

HIGH PRESSURE (HP) COMPRESSOR REAR OUTER AND REAR INNER CASES
FIGURE 2, SHEET 2

September 22/14

V2500-ENG-72-0627

Page 18



HIGH PRESSURE (HP) COMPRESSOR REAR OUTER AND REAR INNER CASES
FIGURE 2, SHEET 3

Appendix

Added Data

Internal Reference Information

Revision No.	Reference Document	Origination
Original	EC11VR001 EC11VR001-01 EC11VR001-02 EC11VR001-03 EC11VR001-04 EC11VR001A EC11VR001A-01 EC11VR001A-02 EC11VR001A-03	ARO/IEL

Number values shown in parentheses adjacent to U.S. values are International System of units (SI) equivalents.

NOTE: In 2014 IAE converted the V2500 Technical Publications to a new system. As a result of the conversion, some manuals were consolidated. All manuals received new P&W part numbers. To facilitate the use of this Service Bulletin, the following Technical Publications cross reference table is provided.

Technical Publications Cross Reference Table

Publication	Engine Model(s)	IAE IETM Pub Ref	P&W Part Number
ENGINE MANUAL — A1, A5	All	E-V2500-1IA	2A4407
CMM-EHC — A1, A5	All	EHC-V2500-1IA	2A4409
CMM-FN — A1, A5	All	FN-V2500-1IA	2A4410
CMM-MMC — A1, A5	All	MECH-V2500-1IA	2A4411
CMM-THD — A1, A5	All	THD-V2500-1IA	2A4412
TLM — A1, A5	All	T-V2500-1IA	2A4408
ENGINE MANUAL — D5	All	E-V2500-3IA	2A4416
CMM-EHC — D5	All	EHC-V2500-3IA	2A4418
CMM-FN — D5	All	FN-V2500-3IA	2A4419
CMM-MMC — D5	All	MECH-V2500-3IA	2A4420
CMM-THD — D5	All	THD-V2500-3IA	2A4423
TLM — D5	All	T-V2500-3IA	2A4417

Publication	Engine Model(s)	IAE IETM Pub Ref	P&W Part Number
SPPM (SPM) — A1, A5, D5	All	SPP-V2500-1IA	2A4414
EIPC — A1	V2500-A1102Q00	S-V2500-1IA	2A4427
EIPC — A5	V2522/V2524/V2527M-AQ02	S-V2500-6IA	2A4428
	V2522/V2524/V2527M-AQ03	S-V2500-6IB	
	V2522/V2524/V2527M-SQ02	S-V2500-6SA	
	V2522/V2524/V2527M-SQ03	S-V2500-6SB	
	V2522/V2524/V2527M-SQ04	S-V2500-6NA	
	V2522/V2524/V2527M-SQ05	S-V2500-6NB	
	V2527/V2527E-AQ02	S-V2500-7IA	
	V2527/V2527E-AQ03	S-V2500-7IB	
	V2527/V2527E-SQ02	S-V2500-7SA	
	V2527/V2527E-SQ03	S-V2500-7SB	
	V2527/V2527E-SQ04	S-V2500-7NA	
	V2527/V2527E-SQ05	S-V2500-7NB	
	V2530-AQ02	S-V2500-2IA	
	V2530-AQ03	S-V2500-2IB	
	V2530-SQ02	S-V2500-2SA	
	V2530-SQ03	S-V2500-2SB	
	V2530-SQ04	S-V2500-2NA	
	V2530-SQ05	S-V2500-2NB	
	V2533-AQ02	S-V2500-5IA	
	V2533-AQ03	S-V2500-5IB	
	V2533-SQ02	S-V2500-5SA	
	V2533-SQ03	S-V2500-5SB	
	V2533-SQ04	S-V2500-5NA	
	V2533-SQ05	S-V2500-5NB	
EIPC — D5	V2525/V2528-AQ02	S-V2500-3IA	2A4426
	V2525/V2528-AQ03	S-V2500-3IB	
	V2525/V2528-AQ04	S-V2500-3IC	