

ENGINE - FUEL AND CONTROL - FUEL AND CONTROL - INCORPORATE BURNER PRESSURE (PB) SENSOR  
TUBES WITH REVISED MOISTURE TRAPS - CATEGORY CODE 6 - MOD.ENG-73-0019

1. Planning Information

A. Effectivity

- (1) Aircraft: Airbus A320
- (2) Engine: V2500-A1 Engines prior to Serial No.V0122

B. Reason

(1) Condition

Existing Burner Pressure (PB) Air Tube Assemblies do not incorporate removable (cleanable) drain plugs.

(2) Background

Experience has demonstrated the desirability of having air tube assemblies featuring drain plugs that can be cleaned.

(3) Objective

The changes in configuration recommended on this Service Bulletin are intended to maintain engine reliability.

(4) Substantiation

The substantiation testing including 150 hours of endurance test has been successfully completed.

(5) Effect of Bulletin on workshop procedure:

Removal/Installation	Affected (see Supplemental Information)
Disassembly/Assembly	Affected (see Supplemental Information)
Cleaning	Not affected
Inspection/Check	Not affected
Repair	Not affected

(6) Supplemental Information

- (a) The Removal/Installation of the Post-Service Bulletin configuration require revision of the Engine Manual under chapter 72-00-32, removal and Installation to show the new clipping position VCP1118 and the revised clipping configuration at CP0544 and CP0565.

V2500-ENG-73-0019



## SERVICE BULLETIN

- (b) The Engine Component Maintenance Manual Disassembly/Assembly procedure under chapter 73-22-49 are required to reflect Post-Service Bulletin configurations that have the removable clean-out plugs with washers in the moisture traps in PB Air Tubes.

C. Description

The changes introduced by this Service Bulletin are as follows:

(a) New PB Air Tubes which have the new designed moisture traps having the clean-out plug and washer at the bottom and 0.023 - 0.027in. (0,59 - 0,68 mm.) in diameter of the drain hole on its side wall have been introduced. (See Figure 2, Sheet 3).

(b) The PB Air Tube adjacent to the Bifurcation Panel has been rerouted to relocate the moisture trap to the lowest position in the PB Air Tube. (See Figure 2, Sheet 1).

(c) The clip which safeties the PB Air Tube at CP0544 has been deleted because of rerouting of the PB Air Tube. (See Figure 2, Sheet 1).

(d) New clipping position CP1118 has been introduced to safety the new PB Air Tube. (See Figure 2, Sheet 1).

(1) New PB Air Tubes, new drain plugs and washers are available for future replacement purposes.

D. Approval

The Part Number changes and/or part modifications described in Section 2 and 3 of this Service Bulletin have been shown to comply with the applicable Federal Aviation Regulations and are FAA-APPROVED for Engine Model listed.

E. Compliance

Category Code 6

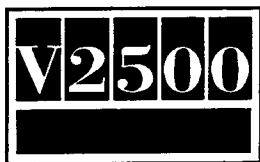
Accomplishment when the subassembly (i.e. Modules, Accessories Components, Build Groups) is disassembled sufficiently to afford access to the affected part and to all affected spare parts.

F. Manpower

Estimated Manhours to incorporate the full intent of this Bulletin:

Venue	Estimated Manhours
(1) In Service	Not applicable
(2) At Overhaul	Not applicable

V2500-ENG-73-0019



## SERVICE BULLETIN

G. Material - Price and Availability

- (1) Modification Kit is not required. Parts supplied as single line items.
- (2) See "Material Information" section for prices and availability of future spares.

H. Tooling - Price and Availability

Special tools are not required to accomplish this Service Bulletin.

I. Weight and Balance

- (1) Weight change      ..    ..    None
- (2) Moment arm      ..    ..    No effect
- (3) Datum      ..    ..    Engine front mount centerline  
(Power Plant Station (P.P.S) 100)

J. Electrical Load Data

This Service Bulletin has no effect on the aircraft electrical load.

K. References

- (1) Internal Reference No.

EC89VJ110A

- (2) Other References

IAE V2500 Service Bulletin Numbers.

V2500-ENG-73-0011 (Fuel and Control - Rework the Ps3 Burner Air Tube Assembly to Incorporate Enlarged Moisture Trap Drain Holes).

V2500 Engine Illustrated Parts Catalog, Chapter/Section 71-51-41, 73-22-49, and 79-22-49.

V2500 Engine Manual, 72-00-32, LP Compressor/Intermediate Case Module, Installation, TASK 72-00-32-420-003.

V2500 Standard Practices/Processes Manual, 70-41-00, Torque Tightening Technique.

L. Other Publications Affected

- (1) V2500 Power Plant Illustrated Parts Catalog, Chapter/Section 71-51-41, Figure 01, 73-22-49, Figures 06 and 07, 79-22-49, Figure 2.

# V2500-ENG-73-0019



- (2) V2500 Engine Illustrated Parts Catalog, Chapter/Section 71-51-41, Figure 01, 73-22-49, Figures 06 and 07, 79-22-49, Figure 02.
- (3) V2500 Engine Manual, 72-00-32, LP Compressor/Intermediate Case Module - Installation, TASK 72-00-32-420-003, and TASK 72-00-32-420-004.
- (4) V2500 Component Maintenance Manual, 73-22-49, Fuel System Air Tubes - Cleaning, TASK 73-22-49-100-104, Inspection/Check, TASK 73-22-49-200, TASK 73-22-49-200-104.

**SERVICE BULLETIN****2. Accomplishment Instructions****A. Rework Instructions**

- (1) There are no rework instructions necessary to accomplish this Bulletin.

**B. Assembly Instructions**

- (1) Install new 5A8799, PB Air Tube Assy and new 5A8800, PB Air Tube Assy, to the LP Compressor/Intermediate Case Module by the approved procedures in the Engine Manual, 72-00-32, Installation. (refer to Figure 2, and 1.K.(3)).
- (2) At new VCP1118, install new 400WSS12, Clip, new 400WSS4, Clip, the two new 5W1086, Washers, new 4W0104, Bolt, and new 4W0001, Nut, to the Scavenge Oil Tube and the PB Air Tube. Torque the Nut to 36 - 45 lbfin (4,00 - 5,00 Nm). (Refer to Figure 2, Sheet 1, and 1.K.(400)).
- (3) At CP0565, install the Clips, the Washers, the Bolt, and the Nut, to the Lug on Scavenge Oil Tube by the approved procedures in the Engine Manual, 72-00-32, Installation, but 400WSS4, Clip, must be turned to safety the rerouted new PB Air Tube. (Refer to Figure 2, Sheet 1, and 1.K.(3)).
- (4) At each CP1037, CP0561, CP1028, CP1027, install the Clip(s), the washers(s), the Bolt, and the Nut by the approved procedures in the Engine Manual, 72-00-32, Installation. (refer to Figure 2, and 1.K.(3)).

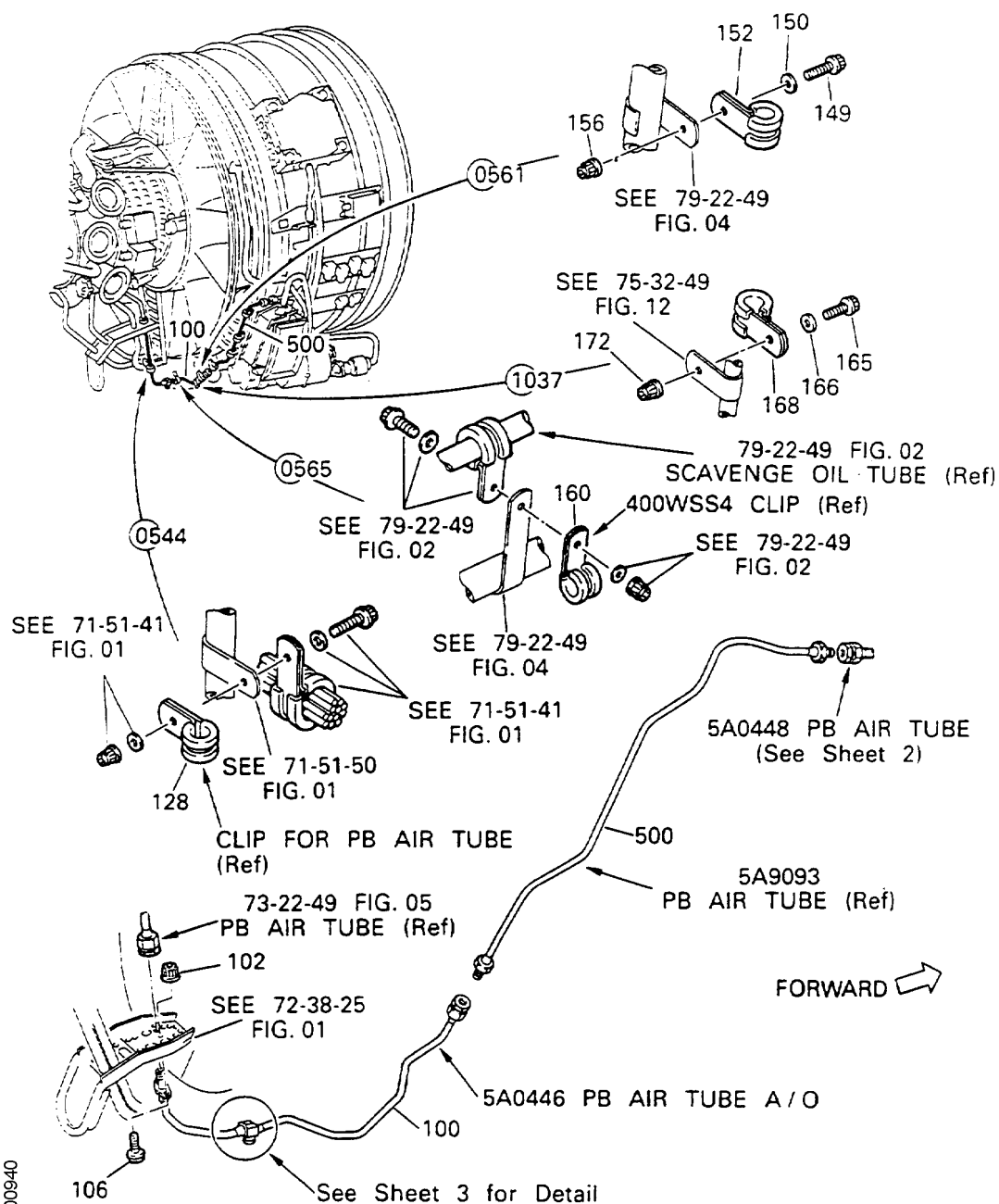
**C. Recording Instructions**

- (1) A record of accomplishment is necessary.

**V2500-ENG-73-0019**

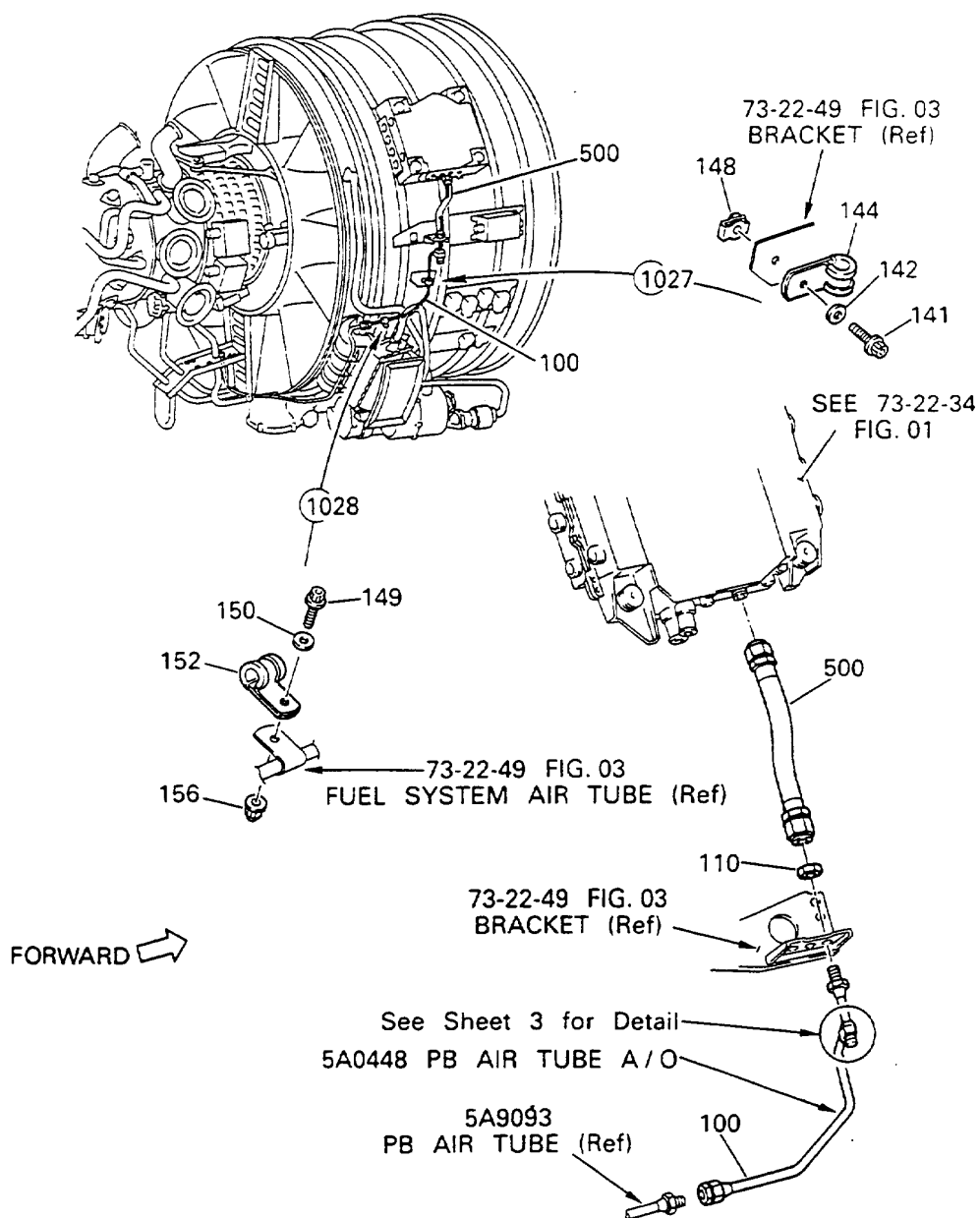


## SERVICE BULLETIN

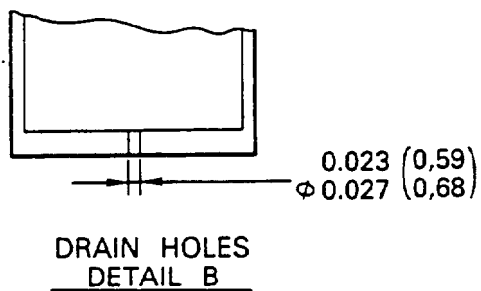
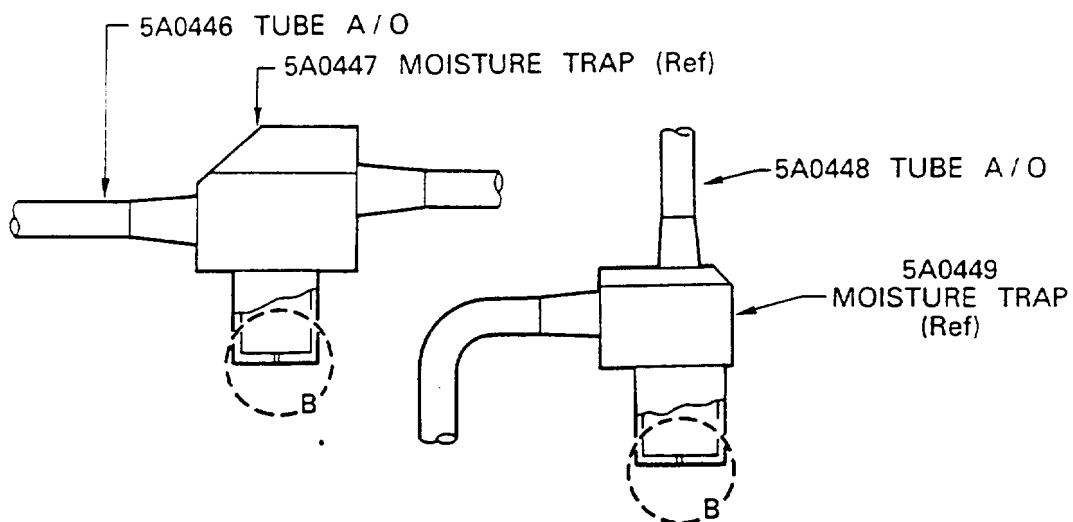


PB Air Tubes and Clipping Details - Before Alteration  
Fig.1, Sheet 1 of 3

V2500-ENG-73-0019



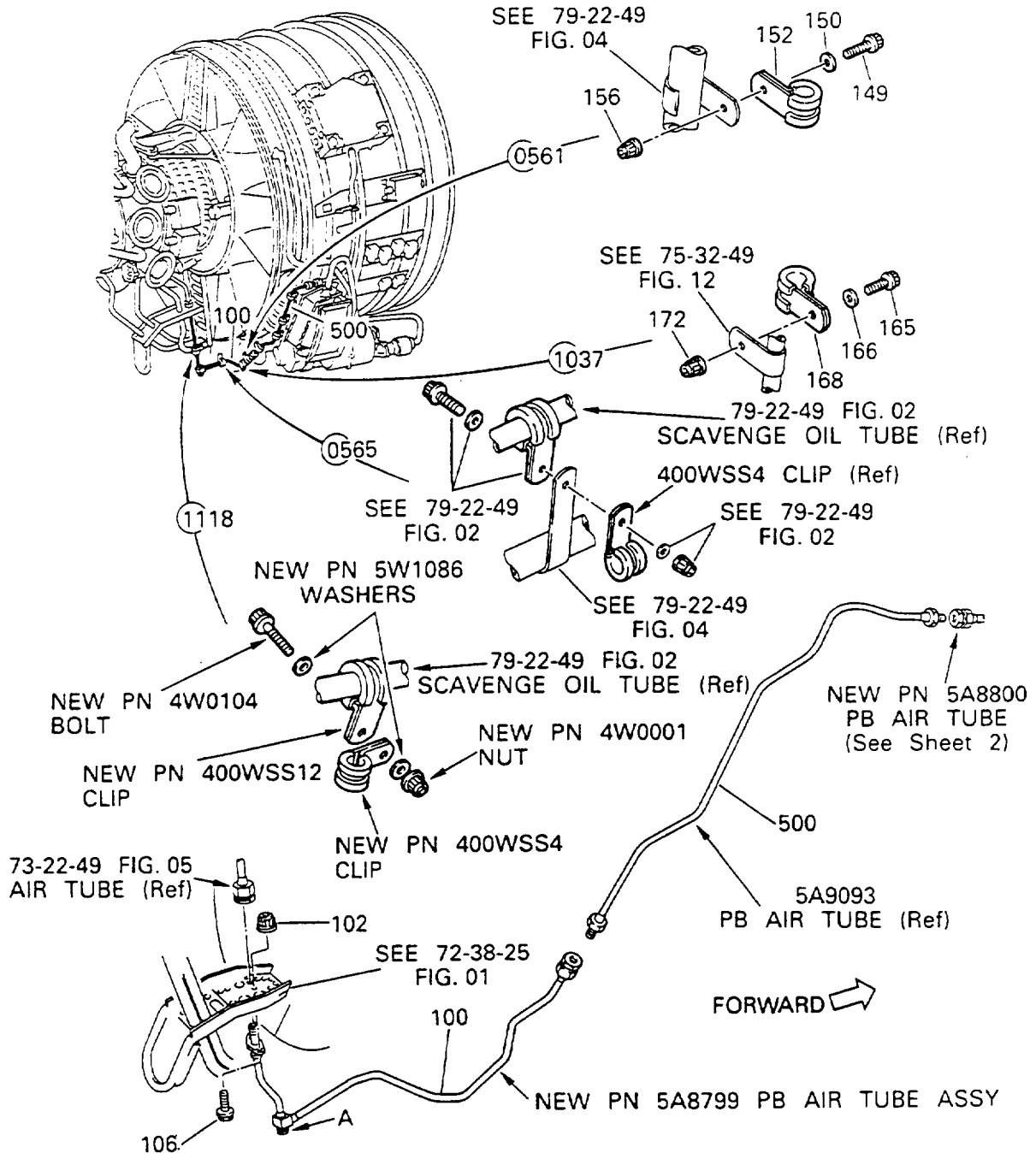
PB Air Tubes and Clipping Details – Before Alteration  
Fig.1, Sheet 2 of 3



PB Air Tubes and Clipping Details - Before Alteration  
Fig.1, Sheet 3 of 3

V2500-ENG-73-0019

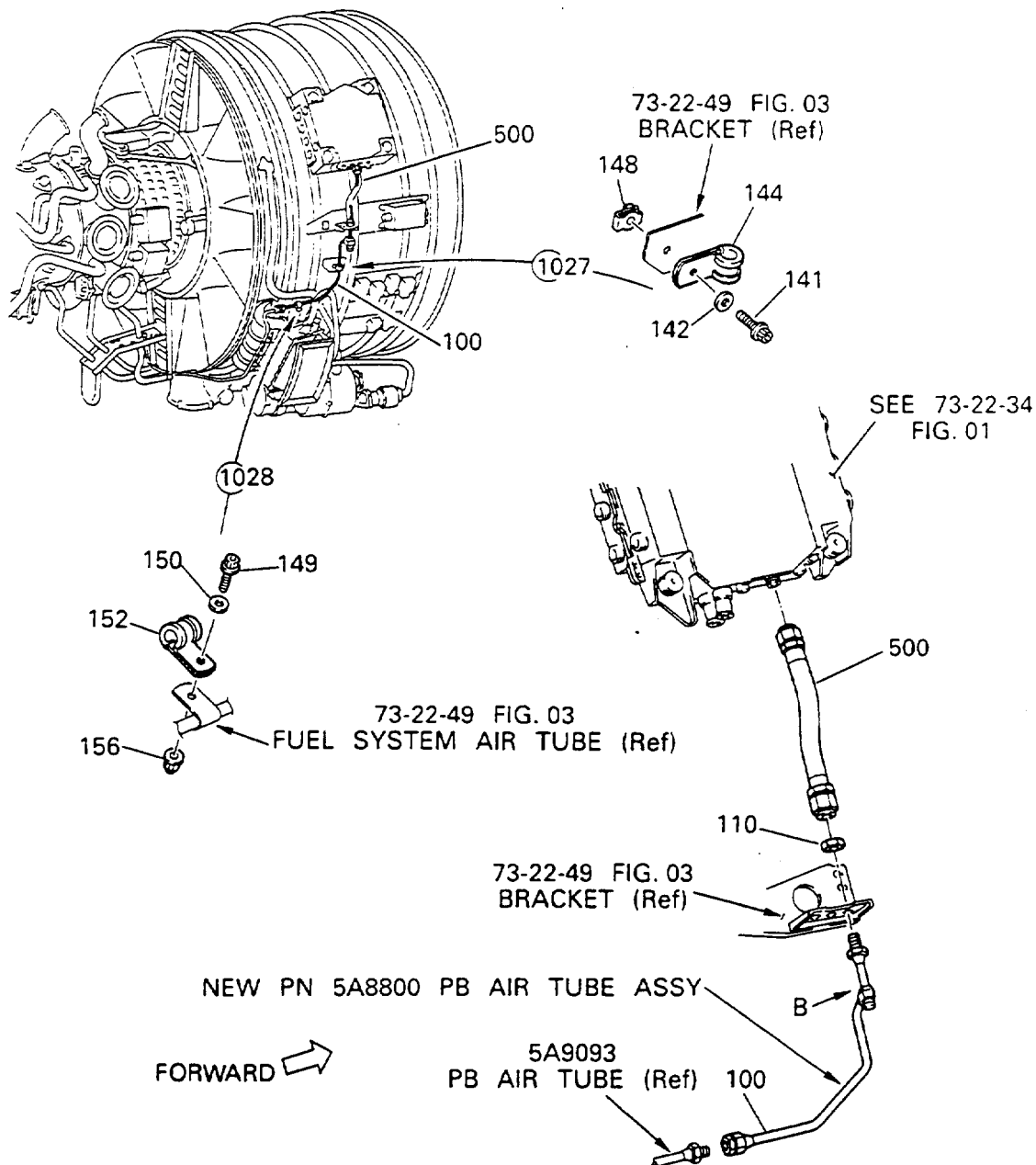
Printed in Great Britain



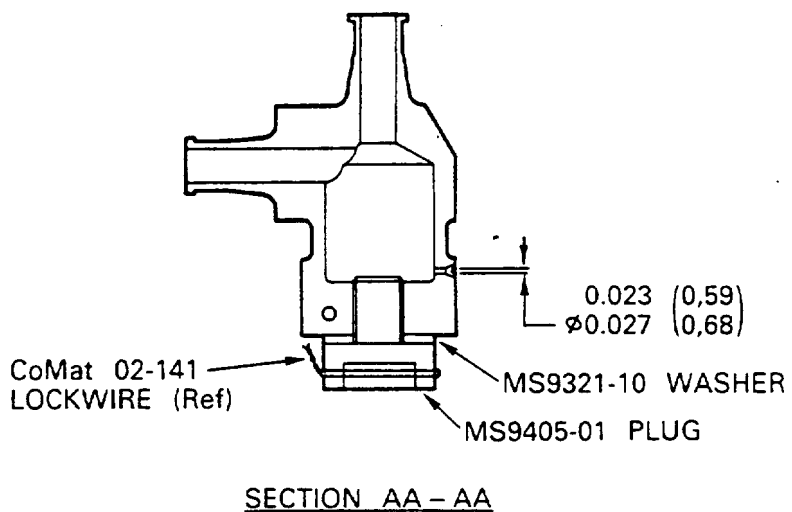
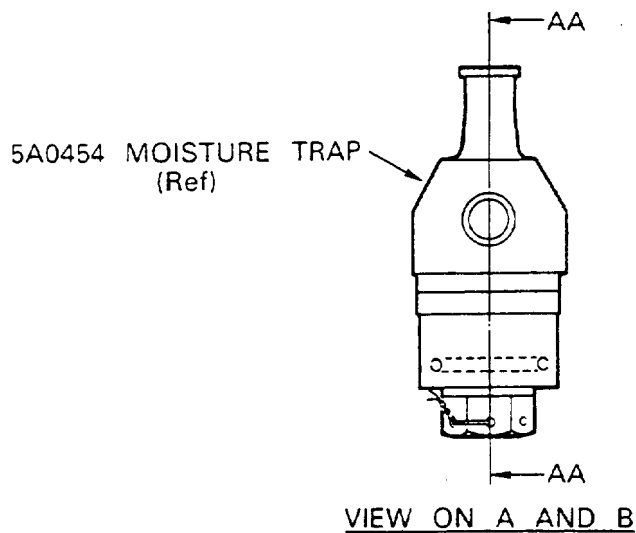
PB Air Tubes and Clipping Details - After Alteration  
Fig.2, Sheet 1 of 3

ded0000943

V2500-ENG-73-0019



PB Air Tubes and Clipping Details – After Alteration  
Fig.2, Sheet 2 of 3



PB Air Tubes and Clipping Details - After Alteration  
Fig.2, Sheet 3 of 3



## SERVICE BULLETIN

3. Material Information

Applicability: For each V2500 Engine to incorporate this Bulletin.

A. Kits associated with this Bulletin:

None

B. Parts affected by this Bulletin:

New Part No. (ATA No.)	Qty	Est'd Unit Price (\$)	Keyword	Old Part No. (IPC No.)	Instructions Disposition
4W0103 (71-51-41)	1	9.47	.Bolt, CP0544	4W0105 (01-558)	(A)(C)(S1)
5W1086 (71-51-41)	1	0.27	.Washer, CP0544	5W1086 (01-559)	(A)(C)(S1) (1D)
MS9405-01 (73-22-49)	1	20.00	..Plug,	- (06-245)	(B)
MS9321-01 (73-22-49)	1	0.03	..Washer, Flat	- (06-250)	(B)
5A8799 (73-22-49)	1	656.00	.Tube, Assy PB Air	5A0446 (06-100)	(B)(D)(S1)
- (73-22-49)	1	-	.Clip, CP0544	400WSS4 (06-128)	(C)(S1)
400WSS4 (73-22-49)	1	3.99	.Clip, CP1118	- (06-176)	(A)(S1)
MS9405-01 (73-22-49)	1	20.00	..Plug,	- (07-245)	(B)
MS9321-10 (73-22-49)	1	0.03	.Washer, Flat	- (07-250)	(B)
5A8800 (73-22-49)	1	596.00	.Tube, Assy	5A0448 (07-100)	(B)(D)(S1)
4W0104 (79-22-49)	1	3.10	.Bolt, CP1118	- (02-141)	(A)(S1)
5W1086 (79-22-49)	1	0.27	.Washer, CP1118	- (02-142)	(A)(S1)
4W00WSS12 (79-22-49)	1	5.34	.Clip, CP1118	- (02-148)	(A)(S1)
4W0001 (79-22-49)	1	5.18	.Nut, CP1118	- (02-148)	(A)(S1)

Printed in Great Britain

V2500-ENG-73-0019



## SERVICE BULLETIN

C. Instruction/Disposition Code Statements:

- (A) New part is currently available for sale.
- (B) Old part will be available approximately October 1990.
- (C) Old part will continue to be supplied on other applications.
- (D) Old part will continue to be available until stock has been exhausted.
- (S1) New parts coded (S1) must replace Old parts coded (S1) as a COMPLETE SET per engine.
- (1D) Quantity of Part No. decreased from two to one.

D. Expendables required to incorporate this Bulletin

None

E. Consumables required to incorporate this Bulletin

None

NOTE: The estimated 1990 unit prices shown are provided for planning purposes only and do not constitute a firm quotation. Consult the IAE Price Catalog or contact IAE's Spare Parts Sales Department for information concerning firm prices.

