



SERVICE BULLETIN

ENGINE - FUEL AND CONTROL - REWIRE THE DATA ENTRY PLUG (DEP) TO THE APPLICABLE WIRING CONFIGURATION - CATEGORY CODE 8 - MOD.ENG-73-0035

1. Planning InformationA. Effectivity

(1) Aircraft: Airbus A320

(2) Engine: For V2500-A1 Engines incorporating Reference (1), the following Data Entry Plug (DEP) Bump configurations apply:

BUMP 00 (No Thrust Bump)

BUMP 01 (Cyprus Thrust Bump)*

BUMP 03 (Consolidated Thrust Bump)*

BUMP 04 (No Thrust Bump and 5 Deg. C Bias applied to measured EGT)

BUMP 05 (Cyprus Thrust Bump and 5 Deg. C Bias applied to measured EGT)*

BUMP 07 (Consolidated Thrust Bump and 5 Deg. C Bias applies to measured EGT)*

NOTE: *The Flight Operations Manual will have specific instructions for Aircraft which have Engines with one of these Thrust Bumps.

Subsequent to this Service Bulletin all approved Data Entry Plug wiring configurations will be given in the related Electronic Engine Control Service Bulletin.

You must contact your IAE Representative when you incorporate this Service Bulletin. You must obey the contractual obligations when you change from a no thrust bump configuration (00 or 04) to a thrust bump configuration (other than 00 or 04).

B. Reason

(1) Condition

The present configuration Data Entry Plugs (DEP's) are not wired to access all of the functions which are available with the SCN11H Electronic Engine Control.

V2500-ENG-73-0035



(2) Background

To access the available functions in the SCN11H Electronic Engine Control it is necessary to wire the DEP to the configuration specified for those functions.

(3) Objective

To wire the DEP Assemblies to the applicable configuration for the necessary functions and to install the new Engine Identification Plates.

(4) Substantiation

Not applicable.

(5) Effects of Bulletin on Workshop Procedures:

Removal/Installation	Not affected
Disassembly/Assembly	Not affected
Cleaning	Not affected
Inspection/Check	Not affected
Repair	Not affected
Testing	Not affected

(6) Supplemental Information

None.

C. Description

- (1) To do a modification to the DEP Assemblies for engines which will incorporate one of the Bump configuration options specified.
- (2) To install new Engine Identification Plates.
- (3) To remove the short DEP Assembly Backshells.

D. Approval

The Part Number Changes and/or part modifications described in Sections 2 and 3 of this Service Bulletin have been shown to comply with the applicable Federal Aviation Regulations and are FAA-APPROVED for the Engine Model listed.

E. Compliance

Category Code 8.

Accomplish based upon experience with the prior configuration.

V2500-ENG-73-0035

F. Manpower

Estimated manhours to incorporate the full intent of this Bulletin:

Venue	Estimated Manhours
(1) In Service (as necessary)	TOTAL 1 hour
(a) Remove the Data Entry Plug Assembly. ..	4 minutes
(b) Disassemble the Data Entry Entry Assembly. ..	5 minutes
(c) Do a check for short Data Entry Plug Assembly Backshells.	3 minutes
(d) Wire to a configuration with or without a bump (as applicable) but includes the 5 degree EGT bias.	25 minutes
(e) Assemble the Data Entry Plug Assembly.	8 minutes
(f) Test the Data Entry Plug Assembly.	4 minutes
(g) Identify and install the Data Entry Plug Assembly	7 minutes
(f) Remove and replace the Engine Identification Plate ..	4 minutes

NOTE: (2) At overhaul (The parts affected by this Service Bulletin are accessible at overhaul)

G. Material - Price and Availability

- (1) Modification Kit not required.
- (2) See "Material Information" section for prices and availability of future spares.

H. Tooling - Price and Availability

None.

I. Weight and Balance

- | | | | | | |
|-----|---------------|----|----|----|--|
| (1) | Weight change | .. | .. | .. | None |
| (2) | Moment arm | .. | .. | .. | No effect |
| (3) | Datum | .. | .. | .. | Engine front mount centerline
(Powerplant station P.P.S. 100) |

J. Electrical Load Data

This Service Bulletin has no effect on the aircraft electrical load.

None.

K. References

- (1) Internal Reference No.

91VZ004

91VC046G

- (2) Other references

V2500-ENG-73-0032 (Engine - Fuel and Control - To Provide A New Electronic Engine Control (EEC) With The SCN11H Software Configuration).

V2500-ENG-73-0043 (Engine - Fuel and Control - Do A Check To Find The Short Data Entry Plug Backshell Assemblies).

V2500 Engine Manual

L. Other Publications Affected

None.



2. Accomplishment Instructions

A. Assembly Instructions

- (1) For Engines V0207 through V0303 do an inspection of the DEP Backshell by the instructions given in Reference (2).
- (2) Do a modification of the 5A0431, 5A0432, 2A2309CL01, or the 2A2309CL02 Data Entry Plug Assembly (See Reference (3), Chapter/Section) 71-00-00, Testing-11 and as follows:

NOTE: When you change the wire configuration of the Data Entry Plug Assembly you must do a check to make sure the new configuration is correct. Use the electrical tester specified. See Reference (3), Chapter/Section 71-00-00, Testing-11.

- (a) Wire the Data Entry Plug to the 00 Bump configuration for engines that will not use Thrust Bump.
- (b) Wire the Data Entry Plug to the 01 Bump configuration for engines that will use the Cyprus Bump.
- (c) Wire the Data Entry Plug to the 03 Bump configuration for engines that will use the Consolidated Thrust Bump.
- (d) Wire the Data Entry Plug to the 04 Bump configuration for engines that will not use the Thrust Bump, but will use the 5 Deg. C Bias (applied to measured EGT).
- (e) Wire the Data Entry Plug to the 05 Bump configuration for engines that will use the Cyprus Bump and the 5 Deg. C Bias (applied to measured EGT).
- (f) Wire the Data Entry Plug to the 07 Bump configuration for engines that will use the Consolidated Thrust Bump and 5 the Deg. C Bias (applied to measured EGT).

B. Replacement Instructions – Engine Identification Plate

- (1)
 - (a) Remove the four bolts that hold the Engine Identification Plate to the bracket located on the fan case at the 9 o'clock position. See Figure 2.
 - (b) Give the old Engine Identification Plate to your local IAE Representative.

V2500-ENG-73-0035



- (c) Get the new 5A9036 or 5A1465 Engine Identification Plate marked with the engine serial number, data entry plug part number, and take-off rating, from your IAE Representative.

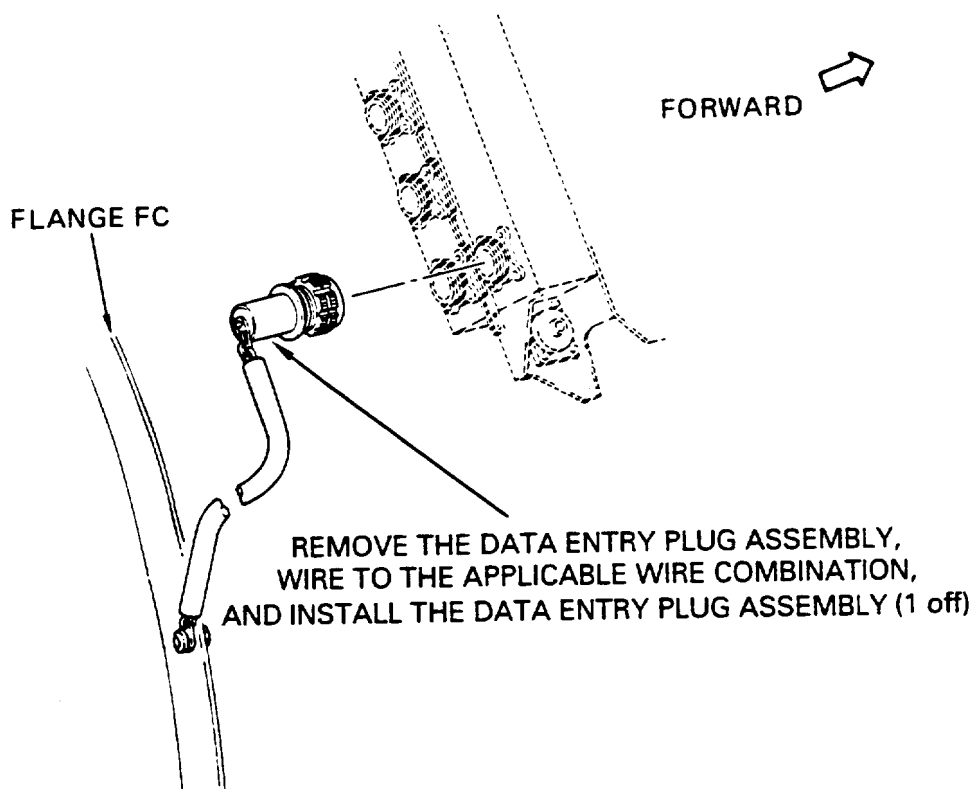
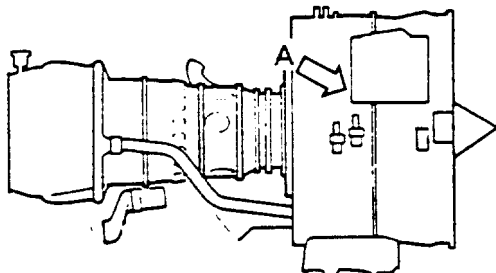
CAUTION: MAKE SURE THE DATA ON THE NEW ENGINE IDENTIFICATION PLATE IS CORRECT FOR THE ENGINE YOU INSTALL IT ON.

- (d) Install the new Engine Identification Plate to the bracket with the 4W0102 Bolts (4 off). See Figure 2.

- (e) Torque the bolts between 32 – 36 lbfin (3,61 – 4,07 Nm).

C. Recording Instructions

- (2) A record of accomplishment is necessary.

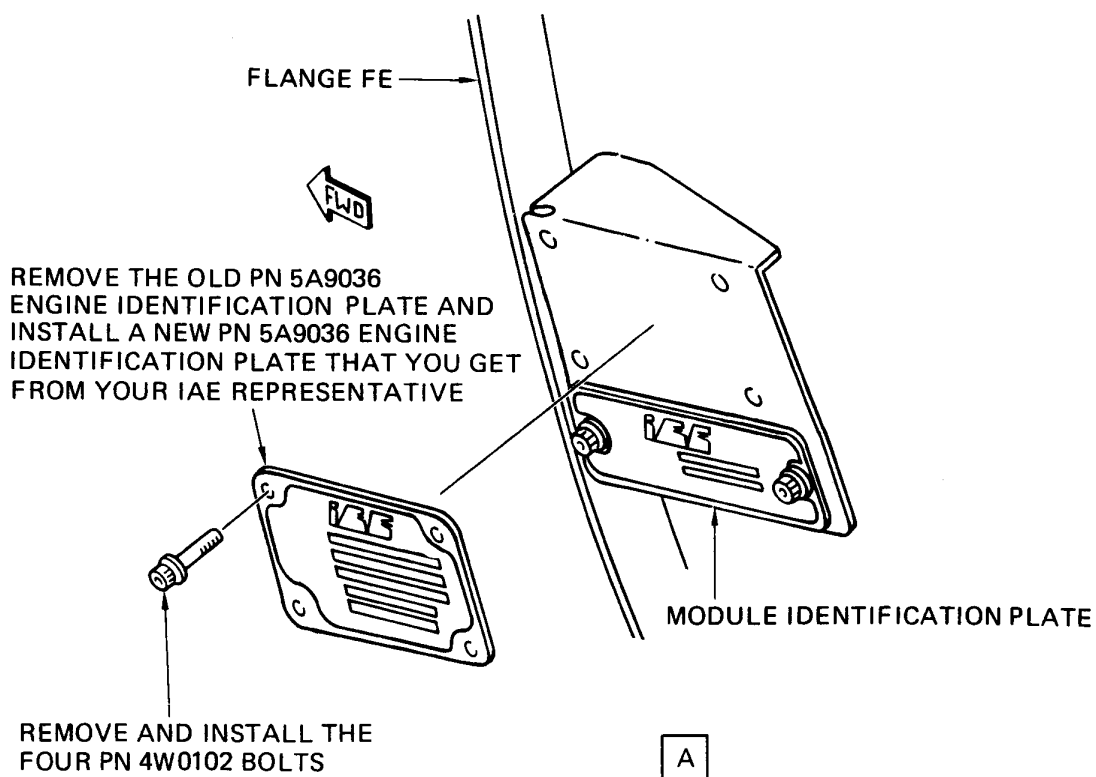
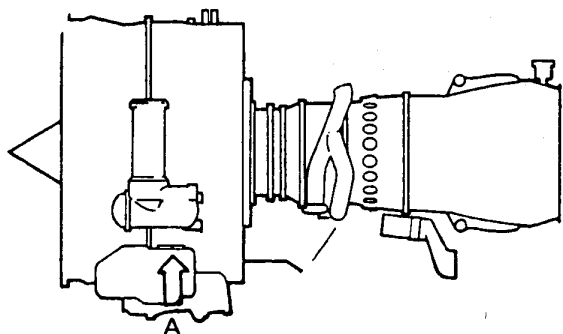


A

B8842

Location of the Data Entry Plug Assembly
Fig.1

V2500-ENG-73-0035



B5092

Location Of Engine Identification Plate
Fig.2

V2500-ENG-73-0035



SERVICE BULLETIN

3. Material Information

Applicability: For each V2500 Engine to incorporate this Bulletin.

A. Kits associated with this Bulletin:

None.

B. Parts affected by this Bulletin:

New Part No. (ATA No.)	Qty	Est'd Unit Price (\$)	Keyword	Old Part No. (IPC No.)	Instructions Disposition
2A2303 (73-22-35)	A/R	-	Backshell Assembly	- (01-130)	(A) (B)
5A9036 (72-32-85)	1	-	Plate, Engine Identification	- (03-120)	(A) (B)
or 5A1465 (72-32-85)	1	-	Plate, Engine Identification	- (03-120)	(A) (B)

C. Instruction/Disposition Code Statements:

(A) Get the new part from your IAE Representative.

(B) Give the old part to your IAE Representative.

NOTE: The estimated 1993 unit prices shown are provided for planning purposes only and do not constitute a firm quotation. Consult the IAE Price Catalog or contact IAE's Spare Parts Sales Department for information concerning firm prices.

V2500-ENG-73-0035

