



ENGINE INDICATING - REPLACE THE EGT HARNESS CLAMP BOLTS AT FLANGE FP - CATEGORY CODE 6
- MOD.ENG-77-0006

1. Planning Information

A. Effectivity

- (1) Aircraft: Airbus A320
- (2) Engine: V2500-A1 Engines before Serial No.V0122.

B. Reason

(1) Condition

There can be interference between the double hexagon head bolts at clipping points 6000 and 6013 and the nacelle rear cowl doors. This is caused by tolerance stack-up and positioning of brackets, bolts, and nacelle parts.

(2) Background

The aircraft manufacturer requested the low profile hexagon head bolts because of potential interference upon installation of the engines into their nacelles.

(3) Objective

To provide additional clearance between the Exhaust Gas Thermocouple (EGT) Mounting Bolt Heads located on flange "FP" Brackets (Clipping Points 6000, 6001, 6002, 6003, 6010, 6011, 6012 and 6013) and the heat shielding and local pans at the cowl load sharing bumpers of the nacelle.

(4) Substantiation

Satisfactory clearance obtained by fit check test in service engines.

(5) Effects of Bulletin on Workshop Procedures:

Removal/Installation	Not Affected
Disassembly/Assembly	Not Affected
Cleaning	Not Affected
Inspection/Check	Not Affected
Repair	Not Affected
Testing	Not Affected

(6) Supplemental Information:

None.

V2500-ENG-77-0006

C. Description

- (1) Low profile Hexagon Head Bolts eliminate the interference with the nacelle parts.

D. Approval

The Part Number Changes and/or part modifications described in Sections 2 and 3 of this Service Bulletin have been shown to comply with the applicable Federal Aviation Regulations and are FAA-APPROVED for the Engine Model listed.

E. Compliance

Category Code 6

Accomplish when the subassembly (i.e. modules, accessories, components, build groups) is disassembled sufficiently to afford access to the affected part and to all affected spare parts.

F. Manpower

Estimated Manhours to incorporate the full intent of this Bulletin:

Venue	Estimated Manhours
-------	--------------------

(1) In service	Not applicable
----------------	----------------

(2) At overhaul	Not applicable
-----------------	----------------

Remarks: No additional time is required to maintain the new configuration.

G. Material – Price and Availability

(1) Modification Kit not required.

(2) See "Material Information" section for prices and availability of future spares.

H. Tooling – Price and Availability

Special tools are not required.

I. Weight and Balance

(1) Weight change None.

(2) Moment arm No effect.

V2500-ENG-77-0006



- (3) Datum Engine front mount Centerline
(Powerplant Station (P.P.S.) 100)

J. Electrical Load Data

This Service Bulletin has no effect on the aircraft electrical load.

K. References

- (1) Internal Reference No.

EC89VA188

- (2) Other References

V2500 Engine Manual

L. Other Publications Affected

- (1) The V2500 Engine Illustrated Parts Catalog Chapter/Section 77-21-43,
Figure 1, to add the new parts.



2. Accomplishment Instructions

A. Rework Instructions

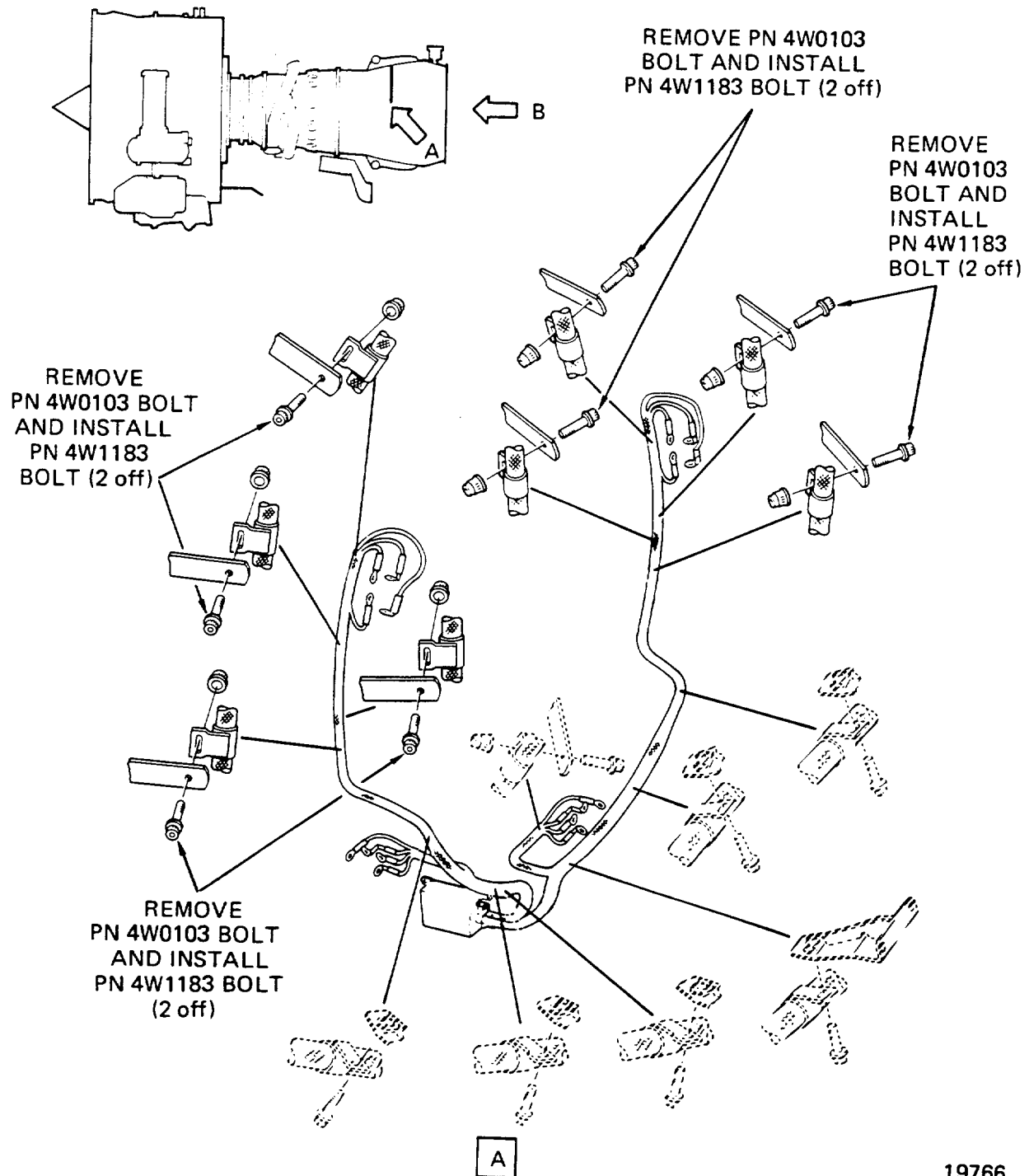
- (1) There are no rework instructions necessary to accomplish this Service Bulletin.

B. Assembly Instructions

- (1) Install the EGT Harness Assembly by the approved procedure in Reference (1) Chapter/Section 72-00-50, Installation -07, and Figure 1 except:
 - (a) Replace 4W0103 Bolts with 4W1183 Bolts at Clipping point 6000, 6001, 6002, 6003, 6010, 6011, 6012 and 6013.

C. Recording Instructions

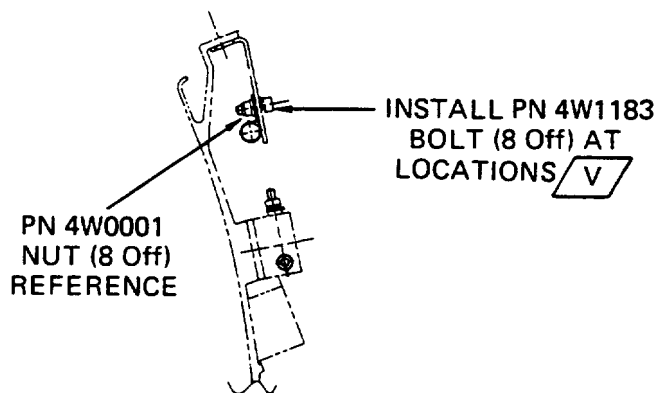
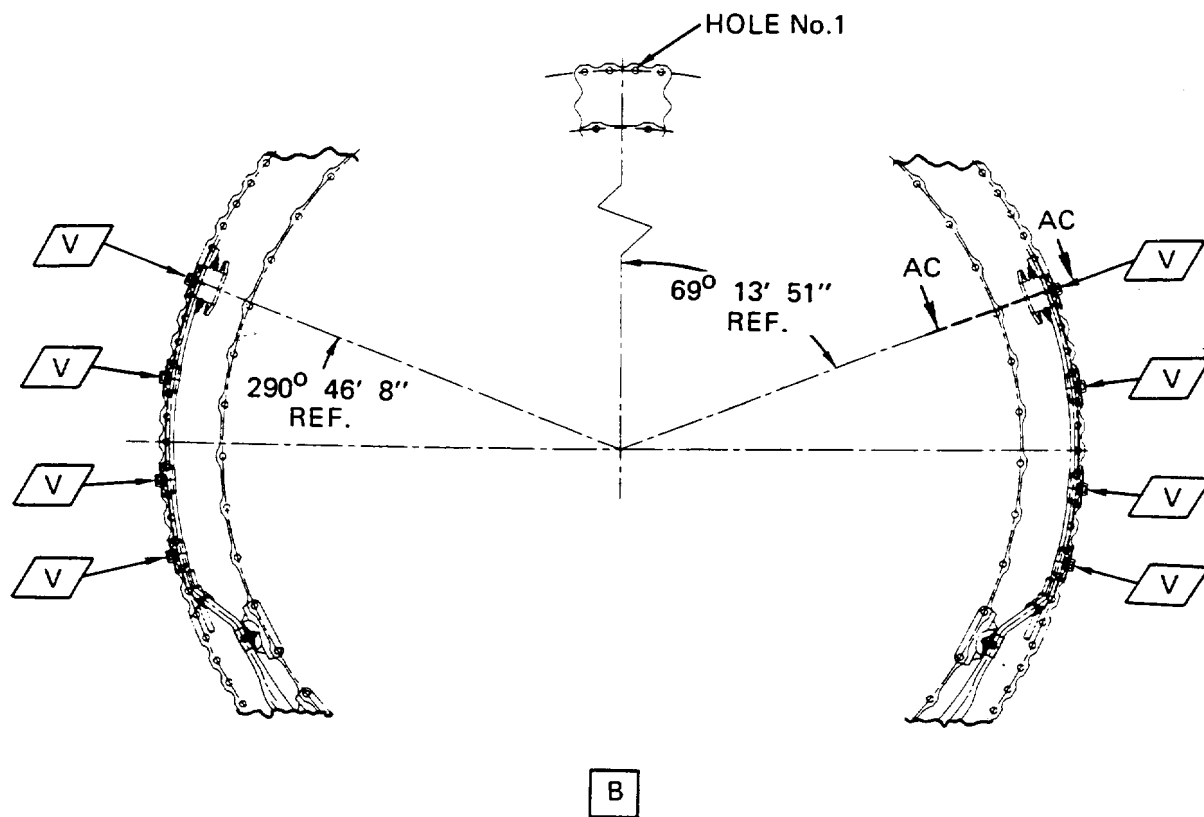
- (1) A record of accomplishment is necessary.



19766

Location of EGT harness clamp bolts
Fig.1 Sheet 1 of 2

V2500-ENG-77-0006



SECTION AC-AC

19767

Location of EGT harness clamp bolts
Fig.1 Sheet 2 of 2

V2500-ENG-77-0006



SERVICE BULLETIN

3. Material Information

Applicability: For each V2500 Engine to incorporate this Bulletin.

A. Kits associated with this Bulletin:

None

B. Parts affected by this Bulletin:

New Part No. (ATA No.)	Qty	Est'd Unit Price (\$)	Keyword	Old Part No. (IPC No.)	Instructions Disposition
4W1183 (77-21-43)	8	1.48	Bolt Option Consisting of:	-	(A)
AS49808			Bolt	(01-150)	
MS9489-06			Bolt	(01-155)	
				(01-160)	
				(01-165)	
				(01-175)	
				(01-180)	
				(01-185)	
				(01-190)	
- (77-21-43)	8		Bolt Option Consisting of:	4W0103	(B)
				(01-150)	
				(01-155)	
				(01-160)	
				(01-165)	
				(01-175)	
				(01-180)	
				(01-185)	
				(01-190)	
			Bolt	AS21408	
			Bolt	MS9556-06	

C. Instruction/Disposition Code Statements:

(A) The new part is currently available and will be supplied for greater units.

(B) The old part will continue to be supplied for lesser units.

NOTE: The estimated 1990 unit prices shown are provided for planning purposes only and do not constitute a firm quotation. Consult the IAE Price Catalog or contact IAE's Spare Parts Sales Department for information concerning firm prices.

V2500-ENG-77-0006

