



400 MAIN STREET, MAIL STOP 121-10
EAST HARTFORD, CT 06108, USA.
TELEPHONE:- 860 565 5515
FAX:- 860 565 0600

DATE: Sep.20/07

P.O. BOX 31, DERBY
TELEGRAMS - 'ROYCAR' DERBY
TELEX - 37645
TELEPHONE:- 44 (0) 1332 242424
FAX:- 44 (0) 1332 249936

V2500-A1 SERIES PROPULSION SYSTEMS SERVICE BULLETIN

Printed in Great Britain

This document transmits Revision 1 to Service Bulletin NV2500-71-0272 and Revision 1 to the Supplement

Document History

Service Bulletin Revision Status
Initial Issue May 15/03

Supplement Revision Status
Initial Issue May 15/03

Service Bulletin Revision 1

Remove	Incorporate	Reason for change
All pages of the	Pages 1 to 45 of the	To revise torque values in
Service Bulletin	Service Bulletin	the Accomplishment
		Instructions.

Supplement Revision 1

Remove	Incorporate	Reason for change
All pages	Page 1	To revise torque values in
		the Accomplishment
		Instructions.

V2500-NAC-71-0272
Transmittal - Page 1 of 1

CHECK THAT ALL PREVIOUS TRANSMITTALS HAVE BEEN INCORPORATED
If any have not been received please advise Customer Data Services, Rolls-Royce plc, Derby, England
© Rolls-Royce plc (date as above) Printed in Great Britain

NACELLE – ENGINE BUILD UNIT (EBU) – REPLACEMENT AND REROUTING OF SEVERAL EBU SYSTEMS
TO ACCOMMODATE THE REROUTING OF THE OIL SCAVENGE TUBES

1. Planning Information

A. Effectivity

- (1) Airbus A320
 - (a) All V2500-A1 Nacelles.

B. Concurrent Requirements

The Service Bulletins below should be done prior to or concurrently with this Service Bulletin:

- (1) V2500-NAC-71-0285
- (2) V2500-ENG-79-0087
- (3) Meggitt 801-26-65

C. Reason

(1) Problem

Various EBU systems share clipping points with hardware that are affected by the accomplishment of Service Bulletin V2500-ENG-79-0087 - 'No.4 Bearing Scavenge Pipe Rerouting'. Additionally, Tubes and Electrical Harnesses are required to be rerouted and Bracketry replaced to accommodate the new hardware introduced by Service Bulletin V2500-ENG-79-0087.

(2) Evidence

The No.4 Compartment Oil Scavenge Tube is to be rerouted. Consequently, it has been found that the proposed new routing affects various EBU Systems at their current positions.

(3) Substantiation

All hardware changes have been successfully installed and substantiated on the Rolls-Royce mock-up facility in Derby and has been the subject of satisfactory engineering analysis.

(4) Objective

To reroute various EBU Systems and replace bracketry to accommodate changes introduced in Service Bulletin V2500-ENG-79-0087.

(5) Effect of Bulletin on:

(a) Operation

Not affected

(b) Maintenance

Affected

(c) Overhaul

Affected

(d) Repair Schemes

Not affected

(e) Interchangeability

Affected

(f) Fits and Clearances

Not affected

D. Description

(1) The changes introduced by this Service Bulletin are as follows:

(a) The Fire Detection Harness (System A) is removed and replaced with a Longer Harness to accommodate new routing.

(b) The following tube is revised:

(i) Cabin Air – 10th Stage High Pressure Bleed Valve to disconnect.

(c) The following Clipping Points are deleted:

(i) CP0974, CP0975, CP0976, CP5221, CP5222, CP5223, CP5723, CP5802, CP5803, CP5804, CP5820, CP5821, CP5863, CP5901, CP5904, CP5905, CP5916, CP5918, CP5919, CP5920, CP5927, CP5928, CP5929 and CP5998.

(d) The following clipping points are revised:

(i) CP5763, CP5764, CP5766, CP5862 and CP5906.

(ii) Additionally, for Operators with Engine Buildup Units prior to 277 that are not incorporating Service Bulletin V2500-NAC-71-0145, Clipping Point CP5500 is revised.

(e) The following Clipping Points are introduced:

- (i) CP1410, CP1423, CP1437, CP5648, CP5652, CP5765, CP5931, CP5940, CP6075, CP6079, CP6084, CP6088, CP6098, CP6112, CP6115, CP6117, CP6118 and CP6125.

(f) The Fan Case Fire Detector is affected as follows:

- (i) Operators with the 7702-02 Fire Detector are instructed to replace with the new 7702-04 Fire Detector which has a new profile to accommodate the new routing.
- (ii) Operators with the 7702-03 Fire Detector are instructed to rework the Fire Detector and re-identify to 7702-04 as instructed in the Meggitt Service Bulletin 801-26-65.

(g) The Overheat Detector is affected as follows:

- (i) Operators with the RP162-01 Overheat Detector are instructed to replace with the new RP162-02 Overheat Detector which has a new profile to remove potential foul conditions with hardware at the new location.
- (ii) Operators with the existing RP162-02 Overheat Detector can use the Detector as part of this modification and install at the new location.

(h) The following Bracket changes have been introduced to accommodate this modification:

- (i) The Core Fire Detector Bracket is removed. Additionally, for Operators with Engine Buildup Units prior to 277 that are not incorporating Service Bulletin V2500-NAC-71-0145, a Core Fire Detector Support Bracket is replaced.
- (ii) The Overheat Detector is removed.

E. Compliance

Category 3

Accomplish at the first visit of a Nacelle to a maintenance base capable of compliance with the accomplishment instructions, regardless of the planned maintenance action, and before the end of July 2006.

F. Approval

The technical content of this Service Bulletin has been approved under the authority of the EASA Design Organisation Approval No. EASA.21J.031.

R

G. Manpower

Estimated man-hours to incorporate the intent of this Service Bulletin on each Nacelle:

(1) In service

4.00 M/Hr

(2) At overhaul

Not applicable

H. Material Cost and Availability

The parts to accomplish this Service Bulletin are available from IAE as Kit Nos. V2571272-551, V2571272-553 and V2571272-555.

Operators with units listed in Paragraph 1.A. should submit a Charge purchase order for the applicable quantity of kits. The Charge purchase order must specify this Service Bulletin number and the parts listed herein.

Direct request to:

IAE Spares Division

400 Main Street

M/S 121-10

East Hartford CT06108

USA

Fax Number 860-565-4121

I. Tooling Cost and Availability

None.

J. Industry Support Information

Not applicable.

K. Weight and Balance

(1) Weight Change

Minus 0.94 lb. (- 0,47 Kg.)

(2) Moment Arm

12.3 in. (322,6 mm.) rearward of datum

(3) Datum

Nacelle Front Mount Centreline (Powerplant Station PPS 100.00)

L. Electrical Load Data

Not affected.

M. Software Accomplishment Summary

Not applicable.

N. References

- (1) Standard Practices/Processes Manual (SPP-V2500-1IA), Chapter/Section 70-41-02.
- (2) A320/V2500-A1 A319/A320/A321/V2500-A5 Aircraft Maintenance Manual (M-V2500-1IA) Chapter/Sections 24-41-00, 24-42-00, 26-12-15, 31-60-00, 36-21-49, 70-23-11, 71-00-00, 71-13-00, 71-52-41, 73-25-34, 78-30-00 and 78-32-00.
- (3) Overhaul Processes and Consumable Index (IAE PCI-V2500-1IA) Section II.
- (4) IAE V2500 Service Bulletins:

V2500-NAC-26-0005

V2500-NAC-71-0145

V2500-NAC-71-0285

V2500-ENG-79-0087
- (5) Meggitt Service Bulletin 801-26-65.
- (6) IAE engineering change EC 03VN753.
- (7) Bombardier Shorts modification D1082.
- (8) Aircraft Modification No. 33113.
- (9) Airbus Service Bulletin A320-79-1001.
- R (10) ATA Locator - 26-12-15, 26-12-17, 36-21-49, 71-52-41 and 75-41-15.

0. Other Publications Affected

- (1) A320/V2500-A1/A5 Engine Illustrated Parts Catalog, Chapter/Section 26-12-15, 26-12-17, 36-21-49, 71-52-41 and 75-41-15 will be revised.
- (2) A320/V2500-A1 A319/A320/A321/V2500-A5 Engine Manual (E-V2500-1IA) Chapter/Sections 72-00-40, 72-00-50 and 72-00-60 will be revised.
- (3) A320/V2500-A1 A319/A320/A321/V2500-A5 Aircraft Maintenance Manual (M-V2500-1IA) Chapter/Sections 26-12-15, 26-12-17, 71-52-41, 71-52-42 and 75-41-15 will be revised.
- (4) A320/V2500 A1 Powerplant Build-Up Manual (PPB-V2500-1IA) will be revised.

P. Interchangeability of Parts

- (1) The parts introduced by this Service Bulletin must be fitted as a set.

2. Material Information

A. Kits associated with this Bulletin:

Applicability: For each V2500-A1 Nacelle to incorporate this Bulletin

NEW PART NO.	QTY	PART TITLE	INSTR DISP
V2571272-551	1	Kit, Rerouting of EBU Attachment 3 Systems	(A)

Consisting of:

740-5089-507	1	Cabin Air Tube
740-5967-523	1	Fire Detection Harness (System A)
400WSS8	3	P-Clip
TA025074-03	5	P-Clip
TA025074-04	7	P-Clip
TA025074-05	1	P-Clip
C10GT3-04	2	P-Clip
C10GT3-08	1	P-Clip
TA0210046FT03	2	P-Clip
AS21406	1	Bolt
AS21407	1	Bolt
AS21408	4	Bolt
AS21411	1	Bolt
AS21412	1	Bolt
AS21414	1	Bolt
AS21415	1	Bolt
AS20624	8	Nut
AS41104	2	Clip Nut
SP154D	4	Washer
SP155D	1	Washer
ST1698D47	1	Spacer
ST1698D48	2	Spacer
740-5286-501	1	Bracket

Printed in Great Britain

Applicability: Operators with Nacelle Engine Buildup Units prior to N288 that HAVE NOT done Service Bulletin V2500-NAC-26-0005

NEW PART NO.	QTY	PART TITLE	INSTR DISP
--------------------	-----	------------	---------------

V2571272-553	1	Kit, Installation of the Fire Detector	
--------------	---	--	--

Consisting of:

7702-04	1	Fire Detector	
400WSS8	11	P-Clip	
AS20624	4	Nut	

Applicability: For Operators with Engine Buildup Units prior to V0107

NEW PART NO.	QTY	PART TITLE	INSTR DISP
--------------------	-----	------------	---------------

V2571272-555	1	Kit, Installation of the Overheat Detector	
--------------	---	--	--

Consisting of:

RP162-02	1	Overheat Detector	
----------	---	-------------------	--

B. Parts affected by this Bulletin - ALL V2500-A1

26-12-15

FIG ITEM NO.	NEW PART NO.	QTY	PART TITLE	OLD PART NO.	INSTR DISP
01100	7702-04	1	Fire Detector	7702-03	(B)(1D)(2D)(S1)
01102	-	1	Bolt (CP0974)	AS21408	(1D)(S1)
01104	-	1	Washer (CP0974)	SP154D	(1D)(S1)
01106	-	1	P-Clip (CP0974)	400WSS8	(1D)(S1)
01108	-	1	Nut (CP0974)	AS20624	(1D)(S1)
01110	-	1	Bolt (CP0975)	AS21408	(1D)(S1)
01112	-	1	Washer (CP0975)	SP154D	(1D)(S1)
01114	-	1	P-Clip (CP0975)	400WSS8	(1D)(S1)
01116	-	1	Nut (CP0975)	AS20624	(1D)(S1)
01118	-	1	Bolt (CP0976)	AS21408	(1D)(S1)
01120	-	1	Washer (CP0976)	SP154D	(1D)(S1)
01122	-	1	P-Clip (CP0976)	400WSS8	(1D)(S1)
01124	-	1	Nut (CP0976)	AS20624	(1D)(S1)
01233	400WSS8	1	P-Clip (CP1437)	-	(B)(S1)

FIG ITEM NO.	NEW PART NO.	QTY	PART TITLE	OLD PART NO.	INSTR DISP
01243	400WSS8	1	P-Clip (CP1423)	—	(B)(S1)
01250	AS21408	1	Bolt (CP1410)	—	(B)(S1)
01251	SP154D	1	Washer (CP1410)	—	(B)(S1)
01253	400WSS8	1	P-Clip (CP1410)	—	(B)(S1)
01257	AS20624	1	Nut (CP1410)	—	(B)(S1)

26-12-17

FIG ITEM NO.	NEW PART NO.	QTY	PART TITLE	OLD PART NO.	INSTR DISP
01190	—		Fire Detector Bracket	740-5287(1D)(S1) -501	
01192	—	1	Bolt (CP5928)	AS21418 (1D)(S1)	
01194	—	1	Washer (CP5928)	SP155D (1D)(S1)	
01196	—	1	Nut (CP5928)	AS20624 (1D)(S1)	
01198	—	1	Bolt (CP5928)	AS21428 (1D)(S1)	
01200	—	1	Spacer (CP5928)	ST1698 (1D)(S1) D50	
01202	—	1	Spacer (CP5928)	ST1698 (1D)(S1) D48	
01204	—	1	P-Clip (CP5928)	TA0250 (1D)(S1) 74-03	
01206	—	1	Washer (CP5928)	SP155D (1D)(S1)	
01208	—	1	Nut (CP5928)	AS20624 (1D)(S1)	
01210	—	1	Bolt (CP5929)	AS21418 (1D)(S1)	
01212	—	1	Washer (CP5929)	SP155D (1D)(S1)	
01214	—	1	Nut (CP5929)	AS20624 (1D)(S1)	
01216	—	1	Bolt (CP5929)	AS21411 (1D)(S1)	
01218	—	1	Washer (CP5929)	SP155D (1D)(S1)	
01220	—	1	Nut (CP5929)	AS20624 (1D)(S1)	
01159	—	1	Core Fire Detector System P-Clip (CP5723)	C10GT3 (1D)(S1) -08	
01230	AS21408	1	Bolt (CP6115)	—	(B)(S1)
01231	SP155D	1	Washer (CP6115)	—	(B)(S1)
01233	C10GT3-08	1	P-Clip (CP6115)	—	(B)(S1)
01237	AS20624	1	Nut (CP6115)	—	(B)(S1)
01240	AS21418	1	Bolt	—	(B)(S1)
01241	SP155D	1	Washer	—	(B)(S1)
01247	AS20624	1	Nut	—	(B)(S1)
01250	AS21418	1	Bolt	—	(B)(S1)
01251	SP155D	1	Washer	—	(B)(S1)
01257	AS20624	1	Nut	—	(B)(S1)

36-21-49

FIG ITEM NO.	NEW PART NO.	QTY	PART TITLE	OLD PART NO.	INSTR DISP
01100	740-5089 -507		Cabin Air Tube	740-5089(B)(C)(1D)(S1) -507	
01125	-	1	Bolt (CP5863)	AS21414 (1D)(S1)	
01126	-	1	Washer (CP5863)	SP155D (1D)(S1)	
01127	-	1	Spacer (CP5863)	ST1698 (1D)(S1)	
01128	-	1	P-Clip (CP5863)	D48 C10GT (1D)(S1) 3-04	
01130	-	1	Nut (CP5863)	AS20624 (1D)(S1)	
01133	AS21407	1	Bolt (CP5862)	AS21408 (B)(1D)(S1)	
01150	AS21406	1	Bolt (CP5931)	- (B)(S1)	
01154	C10GT3-04	1	P-Clip (CP5931)	- (B)(S1)	
01158	AS41104	1	Clip Nut (CP5931)	- (B)(S1)	

71-52-41

FIG ITEM NO.	NEW PART NO.	QTY	PART TITLE	OLD PART NO.	INSTR DISP
01005	740-5967 -523	1	Fire Detection Harness (System A)	740-5967(B)(C)(1D)(S1) -519	
01109	-	1	P-Clip (CP5764)	TA0250 (1D)(S1) 74-05	
01110	-	1	Bolt (CP5905)	AS21407 (1D)(S1)	
01112	-	1	Washer (CP5905)	SP154D (1D)(S1)	
01115	-	1	P-Clip (CP5905)	TA0250 (1D)(S1) 74-05	
01117	-	1	Nut (CP5905)	AS20624 (1D)(S1)	
01118	-	1	Bolt (CP5904)	AS21408 (1D)(S1)	
01120	-	1	Washer (CP5904)	SP154D (1D)(S1)	
01122	-	1	P-Clip (CP5904)	TA0250 (1D)(S1) 74-01	
01123	-	1	P-Clip (CP5904)	TA0250 (1D)(S1) 74-04	
01125	-	1	Nut (CP5904)	AS20624 (1D)(S1)	
01126	TA0250 74-04	1	P-Clip (CP5766)	TA0250 (B)(1D)(S1) 74-03	
01128	-	1	Bolt (CP5918)	AS21407 (1D)(S1)	
01130	-	1	Washer (CP5918)	SP154D (1D)(S1)	
01131	-	1	P-Clip (CP5918)	TA0250 (1D)(S1) 74-03	
01133	-	1	Nut (CP5918)	AS20624 (1D)(S1)	

FIG ITEM NO.	NEW PART NO.	QTY	PART TITLE	OLD PART NO.	INSTR DISP
01134	-	1	Bolt (CP5901)	AS21407	(1D)(S1)
01136	-	1	Washer (CP5901)	SP154D	(1D)(S1)
01139	-	1	P-Clip (CP5901)	TA02700	(1D)(S1)
				OPH05W	
01141	-	1	Nut (CP5901)	AS20624	(1D)(S1)
01142	-	1	Bolt (CP5804)	AS21420	(1D)(S1)
01143	-	1	Washer (CP5804)	SP154D	(1D)(S1)
01144	-	1	Spacer (CP5804)	ST1698	(1D)(S1)
				D50	
01145	-	1	P-Clip (CP5804)	TA0250	(1D)(S1)
				74-03	
01147	-	1	Nut (CP5804)	AS20624	(1D)(S1)
01150	-	1	Bolt (CP5821)	AS21407	(1D)(S1)
01152	-	1	Washer (CP5821)	SP154D	(1D)(S1)
01155	-	1	P-Clip (CP5821)	TA0250	(1D)(S1)
				74-03	
01157	-	1	Clip Nut (CP5821)	AS41104	(1D)(S1)
01158	-	1	Bolt (CP5820)	AS21407	(1D)(S1)
01160	-	1	Washer (CP5820)	SP154D	(1D)(S1)
01163	-	1	P-Clip (CP5820)	TA0250	(1D)(S1)
				74-03	
01165	-	1	Clip Nut (CP5820)	AS41104	(1D)(S1)
01200	-	1	P-Clip (CP5763)	TA0250	(1D)(S1)
				74-05	
01205	AS21411	1	Bolt (CP5906)	AS21407	(B)(1D)(S1)
01207	-	1	Washer (CP5906)	SP154D	(1D)(S1)
01210	TA0250	1	P-Clip (CP5906)	TA0250	(B)(1D)(S1)
	74-03			74-05	
01211	ST1698D47	1	Spacer (CP5906)	-	(B)(S1)
01215	-	1	Bolt (CP5919)	AS21407	(1D)(S1)
01217	-	1	P-Clip (CP5919)	TA0250	(1D)(S1)
				74-03	
01219	-	1	P-Clip (CP5919)	400WSS4	(1D)(S1)
01220	-	1	Washer (CP5919)	SP154D	(1D)(S1)
01223	-	1	Nut (CP5919)	AS20624	(1D)(S1)
01225	-	1	Bolt (CP5920)	AS21407	(1D)(S1)
01227	-	1	P-Clip (CP5920)	TA0250	(1D)(S1)
				74-03	
01229	-	1	P-Clip (CP5920)	400WSS4	(1D)(S1)
01230	-	1	Washer (CP5920)	SP154D	(1D)(S1)
01233	-	1	Nut (CP5920)	AS20624	(1D)(S1)
01240	-	1	P-Clip (CP5222)	TA0250	(1D)(S1)
				74-03	
01244	-	1	Bolt (CP5927)	AS21408	(1D)(S1)
01246	-	1	Washer (CP5927)	SP154D	(1D)(S1)
01248	-	1	Nut (CP5927)	AS20624	(1D)(S1)

FIG ITEM NO.	NEW PART NO.	QTY	PART TITLE	OLD PART NO.	INSTR DISP
01250	—	1	P-Clip (CP5927)	TA0250 74-03	(B)(S1)
01300	AS21415	1	Bolt (CP5940)	—	(B)(S1)
01303	ST1698D48	1	Spacer (CP5940)	—	(B)(S1)
01305	TA0270 74-03	1	P-Clip (CP5940)	—	(B)(S1)
01307	AS20624	1	Nut (CP5940)	—	(B)(S1)
01435	TA0270 74-03	1	P-Clip (CP5648)	—	(B)(S1)
01443	TA0250 74-04	1	P-Clip (CP6075)	—	(B)(S1)
01450	AS21414	1	Bolt (CP6112)	—	(B)(S1)
01451	SP154D	1	Washer (CP6112)	—	(B)(S1)
01453	TA0250 74-04	1	P-Clip (CP6112)	—	(B)(S1)
01455	ST1698D48	1	Spacer (CP6112)	—	(B)(S1)
01457	AS20624	1	Nut (CP6112)	—	(B)(S1)
01463	TA0250 74-04	1	P-Clip (CP6079)	—	(B)(S1)
01473	TA0250 74-04	1	P-Clip (CP6084)	—	(B)(S1)
01483	TA0250 74-04	1	P-Clip (CP6088)	—	(B)(S1)
01493	TA0270 74-03	1	P-Clip (CP6098)	—	(B)(S1)
01503	TA0270 74-03	1	P-Clip (CP5652)	—	(B)(S1)

Overheat Detector System

75-41-15

FIG ITEM NO.	NEW PART NO.	QTY	PART TITLE	OLD PART NO.	INSTR DISP
01124	—	1	Bolt (CP5223)	AS21418	(1D)(S1)
01125	—	1	P-Clip (CP5223)	TA02100 46FT03	(1D)(S1)
01127	—	1	Washer (CP5223)	SP154D	(1D)(S1)
01128	—	1	Nut (CP5223)	AS20624	(1D)(S1)
01130	—	1	Bolt (CP5998)	AS21408	(1D)(S1)
01132	—	1	P-Clip (CP5998)	TA02100 46FT03	(1D)(S1)
01135	—	1	P-Clip (CP5998)	TA02100 46FT08	(1D)(S1)
01137	—	1	Washer (CP5998)	SP154D	(1D)(S1)

V2500-NAC-71-0272

FIG ITEM NO.	NEW PART NO.	QTY	PART TITLE	OLD PART NO.	INSTR DISP
01140	-	1	Nut (CP5998)	AS20624	(1D)(S1)
05010	-		Overheat Detector Bracket	740-5081	(1D)(S1)
05015	-	2	Bolt (CP5802 and CP5803)	AS21428	(1D)(S1)
05020	-	2	Washer (CP5802 and CP5803)	SP154D	(1D)(S1)
05025	-	2	Nut (CP5802 and CP5803)	AS20624	(1D)(S1)
01150	AS21408	1	Bolt (CP6117)	-	(B)(S1)
01151	SP154D	1	Washer (CP6117)	-	(B)(S1)
01153	TA02100 46FT03	1	P-Clip (CP6117)	-	(B)(S1)
01157	AS20624	1	Nut (CP6117)	-	(B)(S1)
01160	AS21408	1	Bolt (CP6125)	-	(B)(S1)
01161	SP154D	1	Washer (CP6125)	-	(B)(S1)
01163	TA02100 46FT03	1	P-Clip (CP6125)	-	(B)(S1)
01167	AS20624	1	Nut (CP6125)	-	(B)(S1)

C. Parts affected by this Bulletin - For Operators with Engine Buildup Units prior to 277 that are not incorporating Service Bulletin V2500-NAC-71-0145

75-22-49

FIG ITEM NO.	NEW PART NO.	QTY	PART TITLE	OLD PART NO.	INSTR DISP
10060	740-5286 -501	1	Core Fire Detector Support Bracket	740-5034	(B)(1D) 505

D. Instructions/Disposition Code Statements

(A) Kit is currently available.

(B) Parts are currently available.

(C) Old and new parts are not physically interchangeable.

(1D) Old part number, if deemed serviceable, may be used up on other applications.

(2D) Old part number may be reworked and reidentified to new part number as instructed in Meggitt Service Bulletin 801-26-65.

(S1) New parts coded (S1) must replace old parts coded (S1) as a complete set.

E. Materials required to incorporate this Bulletin

CoMat 02-099	Lint free cloth
CoMat 02-126	Lockwire
CoMat 10-031	Anti-galling compound
CoMat 10-039 or	Engine oil
CoMat 10-040	

NOTE: To identify the consumable materials, refer to the Overhaul Processes and Consumable Index PCI-V2500-1IA.

3. Accomplishment Instructions

A. Pre-requisite Instructions

WARNING:

DO NOT TOUCH THE ENGINE COMPONENTS FOR A SHORT TIME AFTER THE ENGINE IS SHUT DOWN. THE COMPONENTS STAY HOT AND CAN CAUSE INJURY.

- (1) Energise the Aircraft Electrical Circuits as instructed in the Aircraft Maintenance Manual, Task 24-41-00-861-002.
- (2) Energise the Ground Service Network as instructed in the Aircraft Maintenance Manual, Task 24-42-00-861-001.
- (3) Open, safety and tag the Circuit Breakers as instructed in the Aircraft Maintenance Manual, Task 26-12-15-865-056.
- (4) Obey the Safety Precautions as instructed in the Aircraft Maintenance Manual, Task 36-21-49-941-059-A.
- (5) Deactivate the Thrust Reverser Hydraulic Control Unit 4101KS as instructed in the Aircraft Maintenance Manual, Task 78-30-00-040-012.
- (6) Open the Fan Cowl Doors as instructed in the Aircraft Maintenance Manual, Task 71-13-00-010-010.
- (7) Open the Thrust Reverser Halves as instructed in the Aircraft Maintenance Manual, Task 78-32-00-010-010.

B. Rework Instructions

NOTE: When you remove the Fire Detection Harness for Clipping Points CP5915, CP5914, CP5913, CP5911, CP5910, CP5909, CP5908 and CP5907, place attaching parts in a bag and label the bag.

- (1) Remove the 740-5967 Fire Detection Harness (System A) as instructed in the Aircraft Maintenance Manual, Task 71-52-41-000-010.

NOTE: To secure the 740-5493 Fire Detection Harness (System B) to the engine and prevent damage, temporarily reclip the 740-5493 Fire Detection Harness.

- (2) Reclip the 740-5493 Fire Detection Harness (System B) at Clipping Points CP5821, CP5820, CP5801, and CP5800 (Pre Service Bulletin V2500-NAC-71-0145) or Clipping Points CP5821, CP5820, CP5222, CP5928 and CP5927 (Post Service Bulletin V2500-NAC-71-0145). Refer to the Aircraft Maintenance Manual, Task 71-52-41-400-010.



(3) Remove the 740-5089 Cabin Air Tube

PROCEDURE

RELATED DATA

- (a) Clipping Point CP5916 – Remove the AS20624 Nut, the SP154D Washer, the AS21407 Bolt and the TA025074-03 P-Clip
 - (b) Clipping Point CP5862 – Remove the AS21408 Bolt, the AS41104 Clip Nut and the C10GT3-04 P-Clip
 - (c) Clipping Point CP5863 – Remove the AS20624 Nut, the SP155D Washer, the ST1698D48 Spacer, the AS21414 Bolt and the C10GT3-04 P-Clip.
 - (d) Cut and safety the Lockwire which safeties the Tube Connections.
 - (e) Disconnect the 6A5391 Tube from the 740-5089 Cabin Air Tube.
 - (f) Disconnect the 740-5089 Cabin Air Tube from the 740-5644 Tube.
 - (g) Disconnect the 740-5089 Cabin Air Tube from the High Pressure Bleed Valve.
 - (h) Remove the 740-5089 Cabin Air Tube from the Nacelle.
- (4) Remove the 7702-01 or 7702-02 Fire Detector

NOTE: This instruction is applicable for Operators with Nacelle Engine Buildup Units prior to N288 that HAVE NOT done SB V2500-NAC-26-0005.

PROCEDURE

RELATED DATA

- (a) Remove the 7702-01 or 7702-02 Fire Detector
- Refer to the Aircraft Maintenance Manual, Task 26-12-15-000-041.

(5) Rework the 7702-03 Fire Detector

NOTE: These instructions are applicable for Operators with Nacelle Engine Buildup Units prior to N288 that HAVE done SB V2500-NAC-26-0005 and Operators with Nacelle Engine Buildup Units N288 and on.

PROCEDURE	RELATED DATA
(a) Remove the 7702-03 Fire Detector	Refer to the Aircraft Maintenance Manual, Task 26-12-15-000-041.
(b) Rework the 7702-03 Fire Detector and re-identify to 7702-04	Refer to Meggitt Service Bulletin 801-26-65.

(6) Remove the RP162-01 Overheat Detector

NOTE: These instructions are applicable for Operators with Engine Buildup Units prior to V0107.

PROCEDURE	RELATED DATA
(a) Clipping Point CP5223 - Remove the AS20624 Nut, the SP154D Washer, the AS21408 Bolt and the TA0210046FT03 P-Clip	Refer to Figure 2.
(b) Clipping Point CP5221 - Remove the AS20624 Nut, the SP154D Washer, the ST1698D48 Spacer, the AS21428 Bolt and the TA0210046FT03 P-Clip.	
(c) Remove the four AS8623A Nuts, the four SP155A Washers and the four A117-1-A Bolts to release the RP162-01 Overheat Detector from the 740-5081 Bracket.	
(d) Remove the RP162-01 Overheat Detector from the Nacelle.	

(7) Remove the RP162-02 Overheat Detector

NOTE: These instructions are applicable for Operators with Engine Buildup Units V0107 and on.

PROCEDURE	RELATED DATA
(a) Clipping Point CP5223 - Remove the AS20624 Nut, the SP154D Washer, the AS21408 Bolt and the TA0210046FT03 P-Clip	Refer to Figure 2.



PROCEDURE

RELATED DATA

- (b) Clipping Point CP5998 – Remove the AS20624 Nut, the SP154D Washer, the AS21408 Bolt, the TA0210046FT03 P-Clip and the TA0210046FT08 P-Clip
- (c) Remove the four AS8623A Nuts, the four SP155A Washers and the four A117-1-A Bolts to release the RP162-02 Overheat Detector from the 740-5081 Bracket.
- (d) Remove the RP162-02 Overheat Detector from the Nacelle and retain.
- (8) Remove the 740-5081 Overheat Detector Bracket

PROCEDURE

RELATED DATA

- (a) Clipping Points CP5802 and CP5803 – Remove the AS20624 Nut, the SP154D Washer and the AS21408 Bolt to release the 740-5081 Bracket from the 6A2120 Raceway. Refer to Figure 2.
- (b) Remove the 740-5081 Overheat Detector Bracket from the Nacelle.
- (9) Partial removal of the 7827-02 Core Fire Detector

NOTE: These instructions are applicable for Operators with Engine Buildup Units prior to 277 that HAVE NOT incorporated Service Bulletin V2500-NAC-71-0145.

PROCEDURE

RELATED DATA

- (a) CP5720 and CP5721 – Remove the AS20624 Nut, the SP154D Washer and the AS21420 Bolt Refer to Figure 3.
- (b) CP5722 – Remove the AS20624 Nut, the SP154D Washer, the AS21408 Bolt and the C10GT3-08 P-Clip
- (c) CP5723 – Remove the AS20624 Nut, the SP154D Washer, the ST1698D50 Spacer, the AS21408 Bolt and the C10GT3-08 P-Clip

(d) CP5500 – Remove the AS20624 Nut, the SP154D Washer and the AS21408 Bolt

(e) CP5501, CP5502 and CP5503 – Loosen the AS21408 Bolts to allow the Fire Detector to move freely.

(f) Remove the two 4W0167 Bolts and the two SP123E Washers to release the 740-5034-505 Bracket from the Engine. Retain the Bolts and Washers

(g) Install the 740-5286-501 Bracket to the Engine with the two SP123E Washers and the two 4W0167 Bolts

(h) CP5500 – Install the Fire Detector to the 740-5286-501 Bracket with the AS21408 Bolt, the SP154D Washer and the AS20624 Nut.

(i) Torque the 4W0167 Bolts to 75 – 85 lbfin (8,5 – 9,5 Nm)

Torque the Bolts as instructed in the Aircraft Maintenance Manual, chapter 70-23-11.

(j) CP5500, CP5501, CP5502 and CP5503 – Torque the AS20624 Nuts to 36 – 45 lbfin (4 – 5 Nm)

Torque the Nuts as instructed in the Aircraft Maintenance Manual, chapter 70-23-11.

R

(10) Partial removal of the 7827-02 Core Fire Detector

NOTE: These instructions are applicable for Operators with Engine Buildup Units prior to 277 that HAVE incorporated Service Bulletin V2500-NAC-71-0145 and Engine Buildup Units 277 and on.

PROCEDURE

RELATED DATA

(a) Remove the two AS20624 Nuts, the two SP155D Washers and the two AS21418 Bolts to release the Fire Detector Responders from the 740-5287-501 Fire Detector Bracket. Retain the Bolts and Washers.

Refer to Figure 4.



- (b) Clipping Point CP5928 – Remove the AS20624 Nut, the SP155D Washer, the ST1698D48 Spacer, the ST1698D50 Spacer, the AS21428 Bolt and the TA025074-03 P-Clip.
 - (c) Clipping Point CP5929 – Remove the AS20624 Nut, the SP155D Washer, the ST1698D47 Spacer and the AS21411 Bolt to release the 740-5287-501 Fire Detector Bracket from the 6A5367 Pipe.
 - (d) Remove the 740-5287-501 Fire Detector Bracket from the Nacelle.
 - (e) At Clipping Point CP5723 remove the C10GT3-08 P-Clip.
- (11) Install the 740-5089-507 Cabin Air Tube

NOTE: Unless otherwise instructed, do not tighten or torque the tubes fittings or attaching hardware until all the tubes and attaching hardware are installed in the correct position.

CAUTION:

FAILURE TO PROPERLY APPLY AND CURE THE ANTI-GALLING COMPOUND CAN RESULT IN DAMAGE TO THE TUBE END FITTINGS.

PROCEDURE	RELATED DATA
(a) Apply CoMat 10-031 Anti-galling compound to the threads of the new 740-5089-507 Cabin Air Tube	Remove the applicable covers/caps/plugs from the Engine components.
(b) Connect the 740-5089-507 Cabin Air Tube to the 740-5644 Tube.	Refer to Figure 5.
(c) Connect the 740-5089-507 Cabin Air Tube to the High Pressure Bleed Valve.	
(d) Connect the 6A5391 Tube to the 740-5089-507 Cabin Air Tube.	
(e) Clipping Point CP5862 – Attach the 740-5089-507 Cabin Air Tube to the 740-5073-505 Bracket with the C10GT3-04 P-Clip, the AS41104 Clip Nut and the AS21407 Bolt	Lubricate the Bolts with Engine oil CoMat 10-039 or CoMat 10-040.

- (f) Clipping Point CP5931 – Attach the 740-5089-507 Cabin Air Tube to the 745-5069-501 Bracket with the C10GT3-04 P-Clip, the AS41104 Clip Nut and the AS21406 Bolt

Refer to SB V2500-ENG-79-0087 for the installation of the 745-5069-501 Bracket.

NOTE: Ensure that the Tube has a minimum clearance of 0.25 in (6,35 mm) with adjacent components and structure.

- (g) Torque the end fittings on the 740-5089-507 Cabin Air Tube to 135 – 145 lbfin (15 – 16 Nm)

Torque all Tube fittings as instructed in the Standard Practices/Processes Manual, chapter 70-41-02.

- (h) Torque the end fitting on the 6A5391 Tube to 159 – 177 lbfin (18 – 20 Nm).

- (i) Clipping Points CP5862 and CP5931 – Torque the Bolts to 36 – 45 lbfin (4 – 5 Nm)

Torque the Bolts as instructed in the Aircraft Maintenance Manual, chapter 70-23-11.

- (j) Safety the Tube with CoMat 02-126 Lockwire

Safety the Drain Tubes as instructed in the Aircraft Maintenance Manual, chapter 70-40-11.

(12) Installation of the 7702-04 Fire Detector

NOTE: Ensure that the Fire Detector has a minimum clearance of 0.25 in (6,35 mm) with adjacent pipes and structure.

PROCEDURE

RELATED DATA

- (a) Partially install the 7702-04 Fire Detector to the post SB V2500-NAC-26-0005 Configuration. Do not install Clipping Points CP0974, CP0975 and CP0976

Refer to Aircraft Maintenance Manual, Task 26-12-15-400-041. Do not tighten or torque the attaching hardware until installation is complete.

- (b) Clipping Point CP1437 – Attach the Fire Detector to the 6A6228 Tube, the 6A6204 Tube and the 6A6217 Tube with the 400WSS8 P-Clip

Refer to Figure 6.

- (c) Clipping Point CP1423 – Attach the Fire Detector to the 6A8159 Bracket and the 6A6212 Tube with the 400WSS8 P-Clip

(d) Clipping Point CP1410 – Attach the Fire Detector to the 6A6206 Tube with the 400WSS8 P-Clip, the AS21408 Bolt, the SP154D Washer and the AS20624 Nut

Lubricate the Bolts with Engine oil CoMat 10-039 or CoMat 10-040.

NOTE: Ensure that the Fire Detector has a minimum clearance of 0.25 in (6,35 mm) with adjacent pipes and structure.

(e) Clipping Points CP0777, CP0778, CP0955, CP0956, CP0957, CP0958, CP0941, CP0959, CP0960, CP0961, CP0962, CP1437, CP1423 and CP1410. Torque the AS20624 Nuts to 36 – 45 lbfin (4 – 5 Nm)

Torque the Nuts as instructed in the Aircraft Maintenance Manual, chapter 70-23-11.

R

(13) Modification of Core Fire Detector routing

PROCEDURE

RELATED DATA

(a) Clipping Point CP6115 – Install the Fire Detector to the 6A6196 Tube with the C10GT3-08 P-Clip, the AS21408 Bolt, the SP155D Washer and the AS20624 Nut

Refer to Figure 6.
Lubricate the Bolts with Engine oil CoMat 10-039 or CoMat 10-040.

NOTE: Ensure that the Fire Detector has a minimum clearance of 0.25 in (6,35 mm) with adjacent pipes and structure.

(b) Torque the AS20624 Nut to 36 – 45 lbfin (4 – 5 Nm)

Torque the Nuts as instructed in the Aircraft Maintenance Manual, chapter 70-23-11.

R

(14) Install the RP162-02 Overheat Detector

PROCEDURE

RELATED DATA

(a) Install the RP162-02 Overheat Detector to the 740-5290-501 bracket with the four A117-1-A Bolts, the four SP155A Washers and the four AS8623A Nuts

Refer to Figure 8.
Lubricate the Nuts with Engine oil CoMat 10-039 or CoMat 10-040.

(b) Torque the AS8623A Nuts to 6 lbfin (0,68 Nm)

Torque the Nuts as instructed in the Aircraft Maintenance Manual, chapter 70-23-11.

R

(c) Clipping Point CP6117 – Attach the Overheat Detector to the 6A6196 Tube with the TA0210046FT03 P-Clip, the AS21408 Bolt, the SP154D Washer and the AS20624 Nut

Lubricate the Bolts with Engine oil CoMat 10-039 or CoMat 10-040.

(d) Clipping Point CP6125 – Attach the Overheat Detector to the 6A6200 Tube with the TA0210046FT03 P-Clip, the AS21408 Bolt, the SP154D Washer and the AS20624 Nut

NOTE: Ensure that the Overheat Detector has a minimum clearance of 0.25 in (6,35 mm) with adjacent components and structure.

(e) Torque the AS20624 Nuts to 36 – 45 lbfin (4 – 5 Nm)

Torque the Nuts as instructed in the Aircraft Maintenance Manual, chapter 70-23-11.

(15) Install the Core Fire Detector

PROCEDURE

RELATED DATA

(a) Install the Fire Detector Responders to the 740-5290-501 bracket with the two AS21418 Bolts, the two SP155D Washers and the two AS20624 Nuts

Refer to Figure 8.

(b) Torque the AS20624 Nuts to 36 – 45 lbfin (4 – 5 Nm)

Torque the Nuts as instructed in the Aircraft Maintenance Manual, chapter 70-23-11.

(16) Install the 740-5967-523 Fire Detection Harness (System A)

PROCEDURE

RELATED DATA

(a) Remove the applicable covers/caps/plugs from the electrical connectors and electrical receptacles.



- (b) Put the new 740-5967-523 Fire Detection Harness (System A) in position Keep enough slack in the harness to prevent stress loads on the Harness Connectors.
- (c) Connect the electrical Connectors
- (i) 452VC and 450VC Electrical Connectors to the Pylon interface panel Refer to the Aircraft Maintenance Manual, Task 70-23-15-912-010.
- (ii) 4000HA-A Electrical Connector to the Bleed Pressure Regulator Valve.
- (iii) 4001HA-A Electrical Connector to the High Pressure Bleed Valve.
- (iv) 4008KS-A Electrical Connector to the Overheat Detector.
- (v) 4001WD1-A Electrical Connector to the Fire Detector.
- (d) Attach the Harness at Clipping Points CP5915, CP5914, CP5913, CP5911, CP5910, CP5909 and CP5907 Refer to the Aircraft Maintenance Manual, Task 71-52-41-400-010.
- (e) CP5906 - Attach the Harness to the 6A6021 Tube with the TA025074-03 P-Clip, the AS21411 Bolt, the ST1698D47 Spacer and the AS20624 Nut Refer to Figure 9. Lubricate all Clipping Point Bolts and Nuts with Engine oil CoMat 10-039 or CoMat 10-040.
- (f) CP5652 - Attach the Harness to the 6A6021 Tube and the 5A8758 Tube with the TA025074-03 P-Clip
- (g) CP5763, CP5764 and CP5765 - Attach the Harness to the 6A6021 Tube
- (h) CP5648 - Attach the Harness to the 6A6203 Tube, the 6A2149 Tube, the Bracket, the 6A6021 Tube and the 6A6010 Tube with the TA025074-03 P-Clip
- (i) CP6098 - Attach the Harness to the 6A5391 Tube and the 6A6009 Tube with the TA025074-03 P-Clip

R



- (j) CP5940 – Attach the Harness to the 6A6203 Tube with the TA025074-03 P-Clip, the AS21415 Bolt, the ST1698D48 Spacer and the AS20624 Nut
- (k) CP5766 – Attach the Harness to the 6A6203 Tube and the 6A2150 Tube with the TA025074-04 P-Clip
- (l) CP6112 – Attach the Harness to the 6A6203 Tube with the TA025074-04 P-Clip, the AS21414 Bolt, the SP154D Washer, the ST1698D48 Spacer and the AS20624 Nut
- (m) CP6088 – Attach the Harness to the 6A6007 Tube and the 6A6202 Tube with the TA025074-04 P-Clip
- (n) CP6084 – Attach the Harness to the 6A6007 Tube and the 6A5397 Tube with the TA025074-04 P-Clip
- (o) CP6079 – Attach the Harness to the 6A6007 Tube and the 6A5390 Tube with the TA025074-04 P-Clip
- (p) CP6075 – Attach the Harness to the 6A6197 Tube, the 6A5390 Tube, the 6A6198 Tube and the 6A5392 Tube with the TA025074-04 P-Clip
- (q) CP6126 – Install the 740-5967-523 Fire Detection Harness (System A) to the 6A6198 Tube with the TA025074-05 P-Clip



(r) CP6120 – Attach the Harness to the 740-5290-501 Overheat Detector Bracket and the 6A6196 Tube with the TA025074-04 P-Clip, the AS21412 Bolt and the AS20624 Nut

(s) Torque the AS20624 Nuts to 36 – 45 lbfin (4 – 5 Nm)

Torque the Nuts as instructed in the Aircraft Maintenance Manual, chapter 70-23-11.

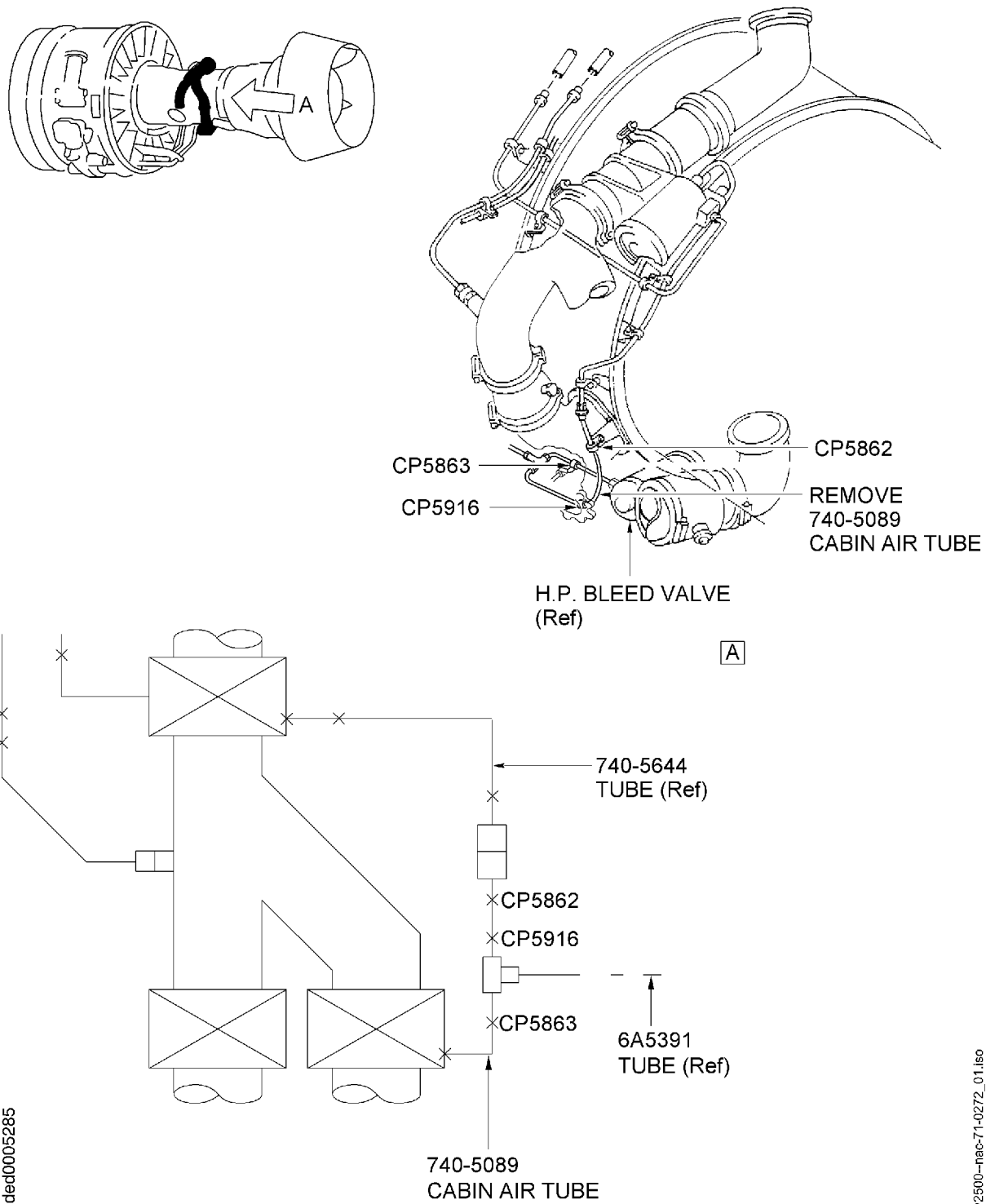
R

C. Post-requisite Instructions

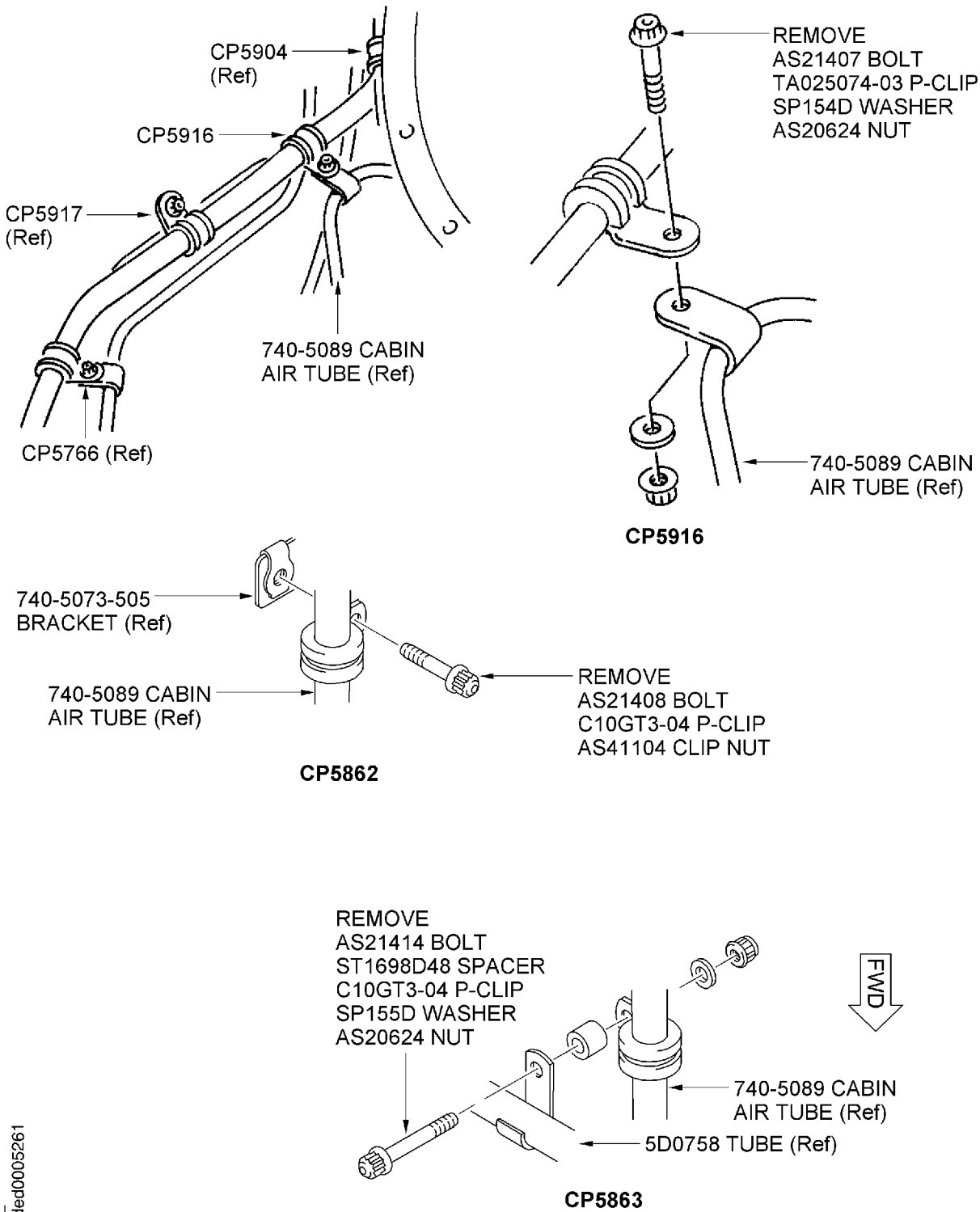
- (1) Remove the Safety Clips and the Tags and close these Circuit Breakers:
7WD1, 7WD2, 8WD1, 8WD2
- (2) Close the Thrust Reverser Halves as instructed in the Aircraft Maintenance Manual, Task 78-32-00-410-010.
- (3) Close the Fan Cowl Doors as instructed in the Aircraft Maintenance Manual, Task 71-13-00-410-010.
- (4) Activate the Thrust Reverser as instructed in the Aircraft Maintenance Manual, Task 78-30-00-440-012.
- (5) Do the EIS start procedure as instructed in the Aircraft Maintenance Manual, Task 31-60-00-860-001.
- (6) Do the Fire Detection tests as instructed in the Aircraft Maintenance Manual, Subtask 26-12-15-710-052.
- (7) Do the EIS stop procedure as instructed in the Aircraft Maintenance Manual, Task 31-60-00-860-002.
- (8) Do the EEC system test as instructed in the A320/V2500-A1 A319/A320/A321/V2500-A5 Aircraft Maintenance Manual, Task 71-00-00-710-022.
- (9) Do an operational Test as instructed in the Aircraft Maintenance Manual, Task 73-25-34-710-042.

D. Recording Instructions

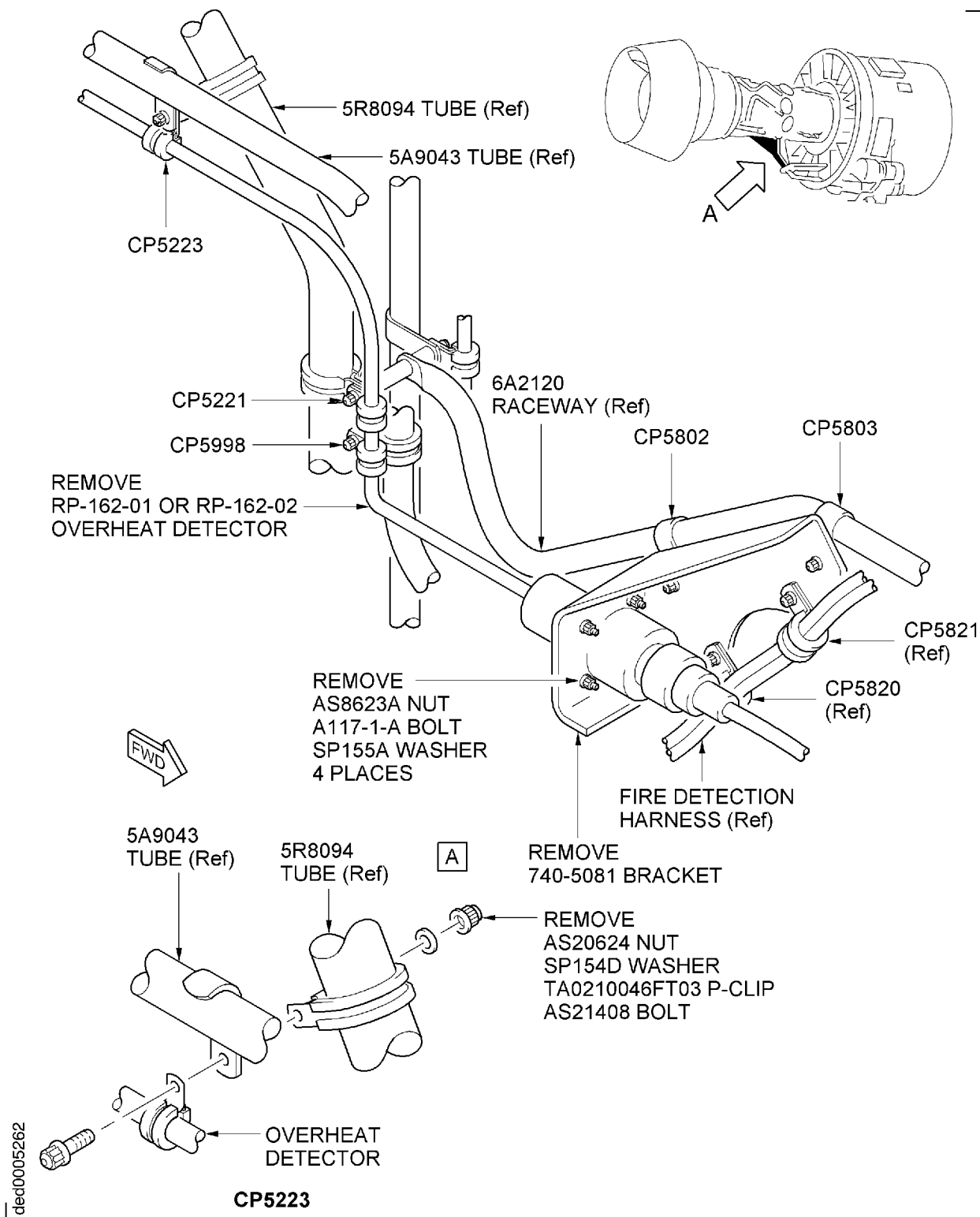
A record of accomplishment is necessary. Write in the Aircraft Log Book that Service Bulletin V2500-NAC-71-0272 has been done.



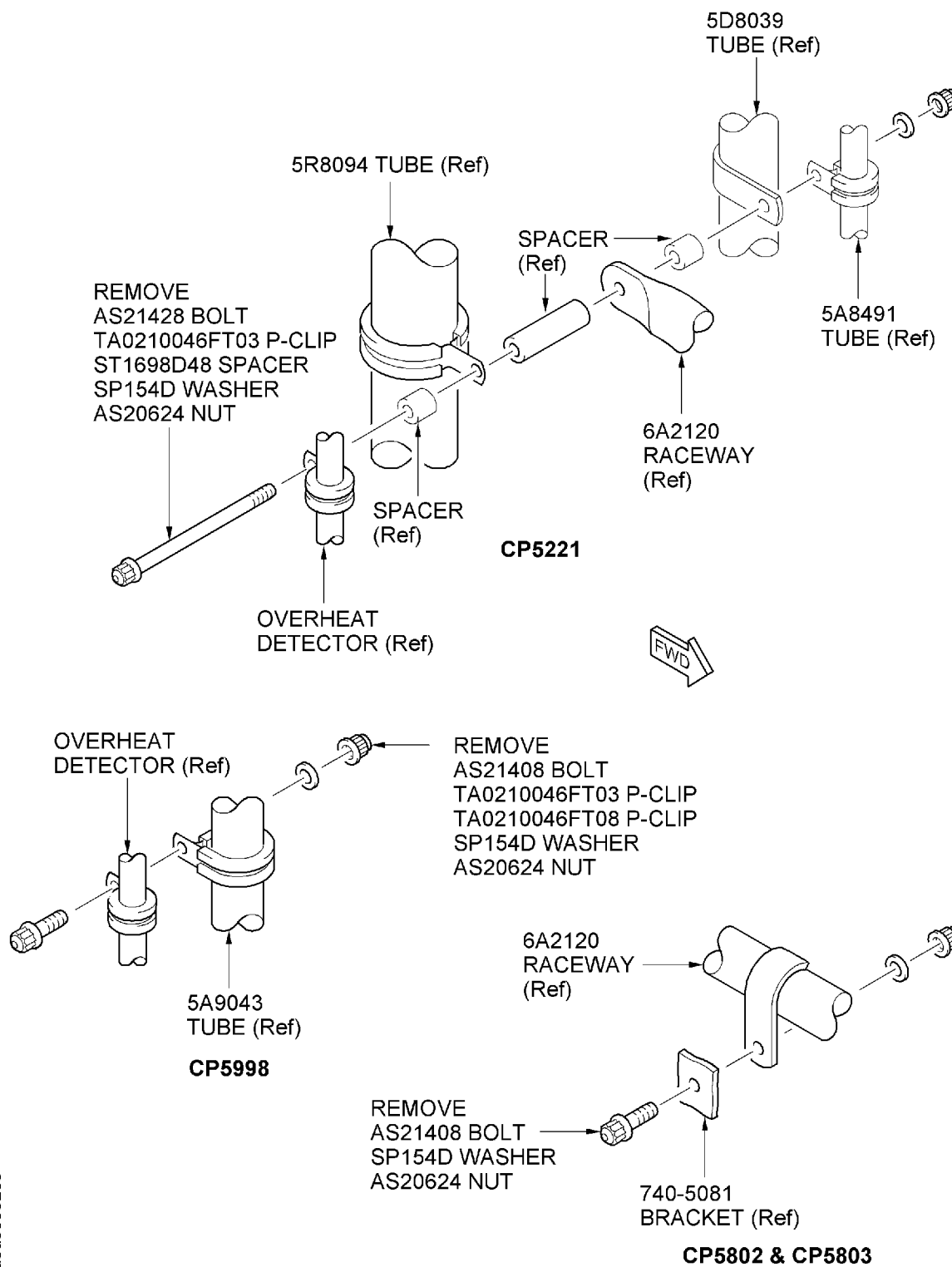
Removal of the Cabin Air Tube
Figure 1 Sheet 1 of 2



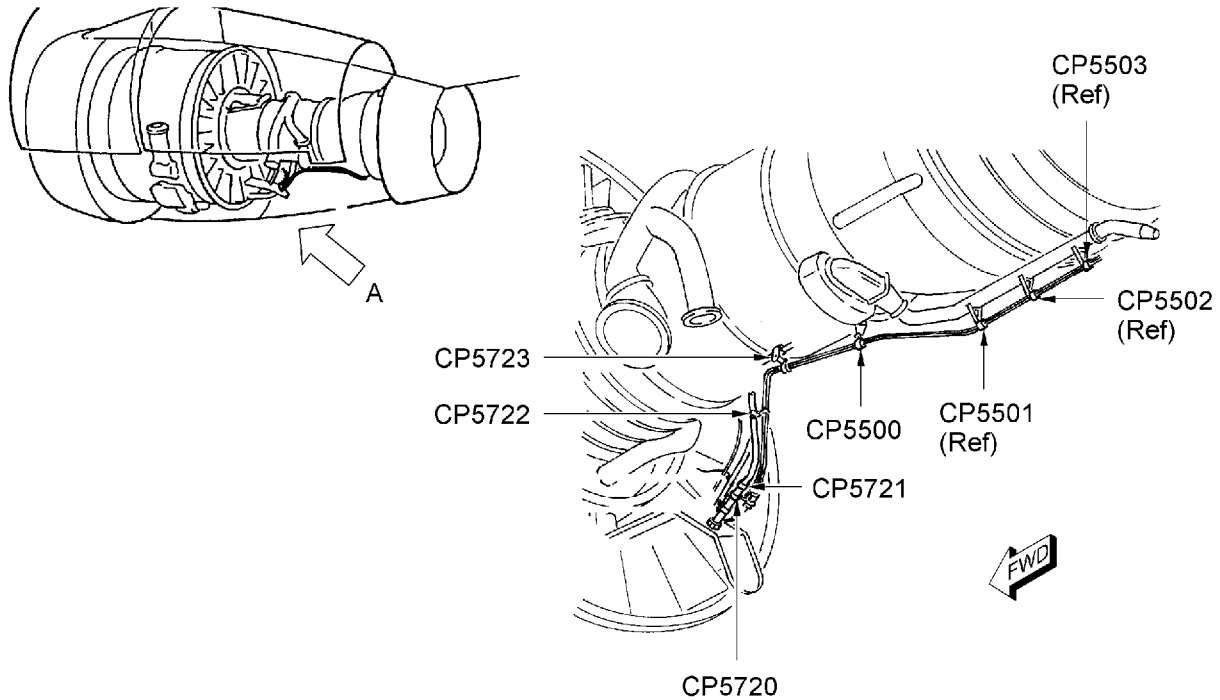
Removal of the Cabin Air Tube
Figure 1 Sheet 2 of 2



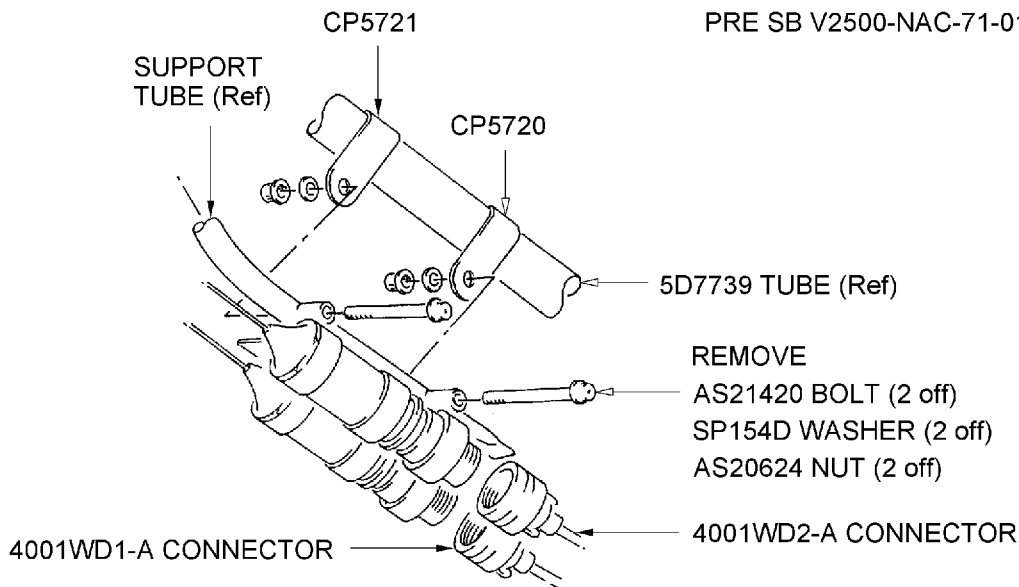
Removal of the Overheat Detector and Bracket
Figure 2 Sheet 1 of 2



Removal of the Overheat Detector and Bracket
Figure 2 Sheet 2 of 2

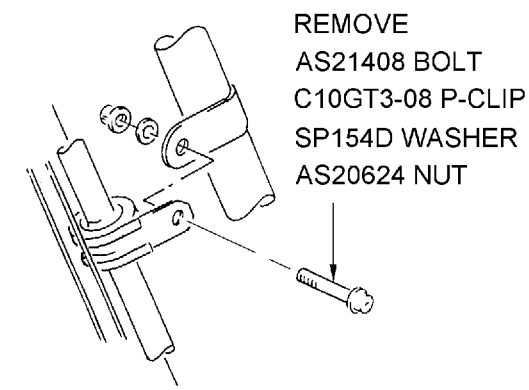


PRE SB V2500-NAC-71-0145



CLIPPING POINTS 5720 & 5721
PRE SB V2500-NAC-71-0145

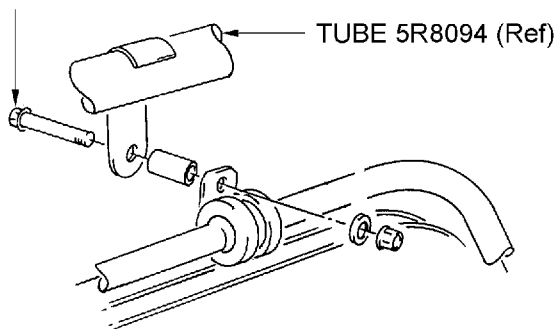
Removal of the Core Fire Detector
Figure 3 Sheet 1 of 2



REMOVE
AS21408 BOLT
C10GT3-08 P-CLIP
SP154D WASHER
AS20624 NUT

CP5722
PRE SB V2500-NAC-71-0145

REMOVE
AS21420 BOLT
ST1698D50 SPACER
C10GT3-08 P-CLIP
SP154D WASHER
AS20624 NUT

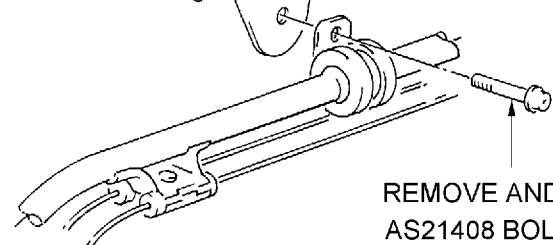


CP5723
PRE SB V2500-NAC-71-0145

REMOVE AND INSTALL
4W0167 BOLT (2 off)
SP123E WASHER



REMOVE
740-5034-505 BRACKET
INSTALL
740-5286-501 BRACKET



REMOVE AND INSTALL
AS21408 BOLT
SP154D WASHER
AS20624 NUT

CP5500
PRE SB V2500-NAC-71-0145

ded0005600

v2500-nac-71-0272_19.iso

Removal of the Core Fire Detector
Figure 3 Sheet 2 of 2

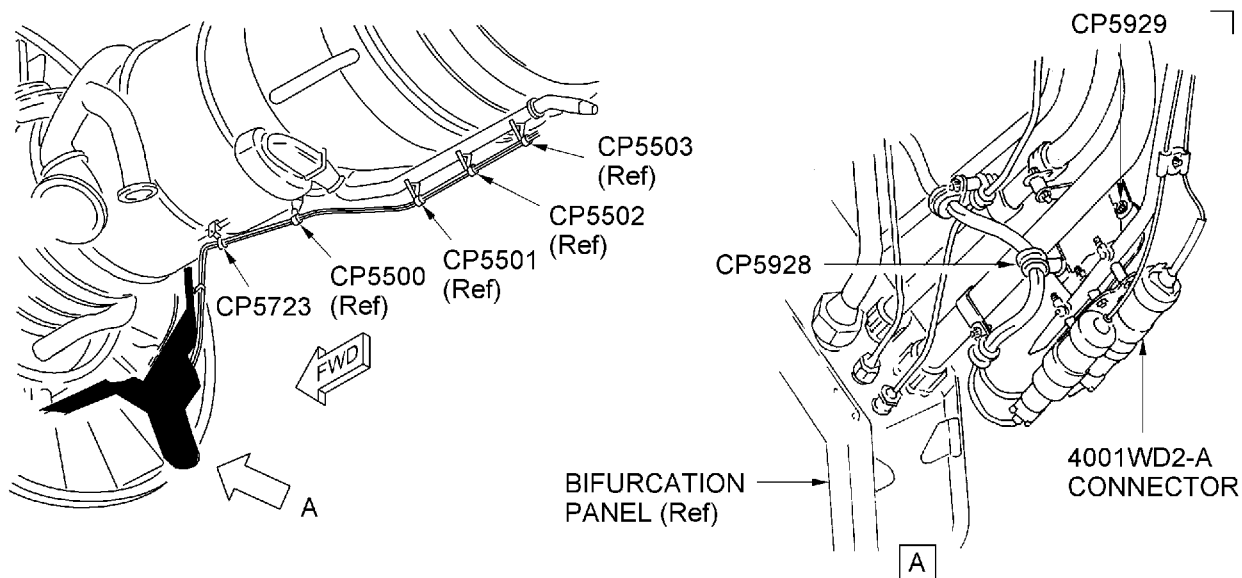
V2500-NAC-71-0272

Page 32

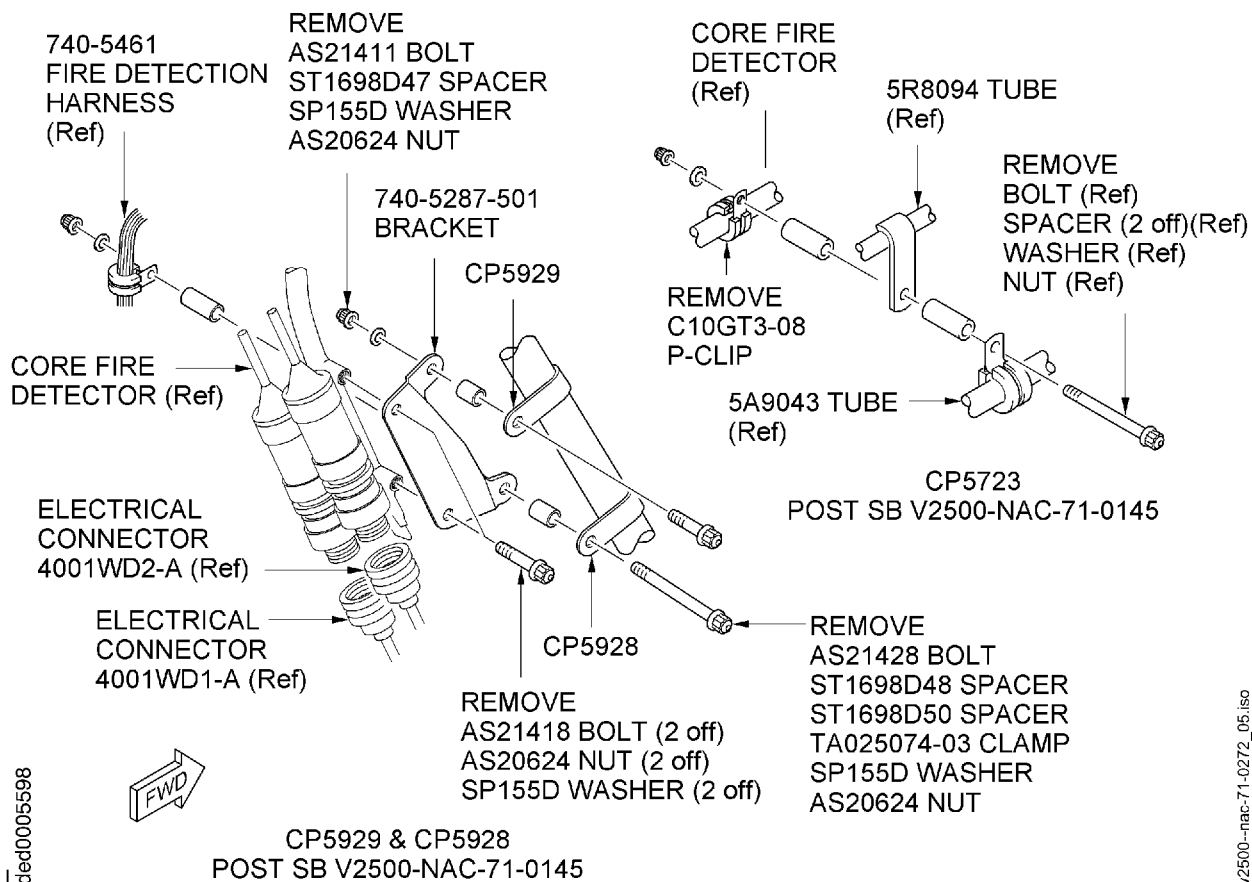
May 15/03
R Sep.20/07

© Rolls-Royce plc

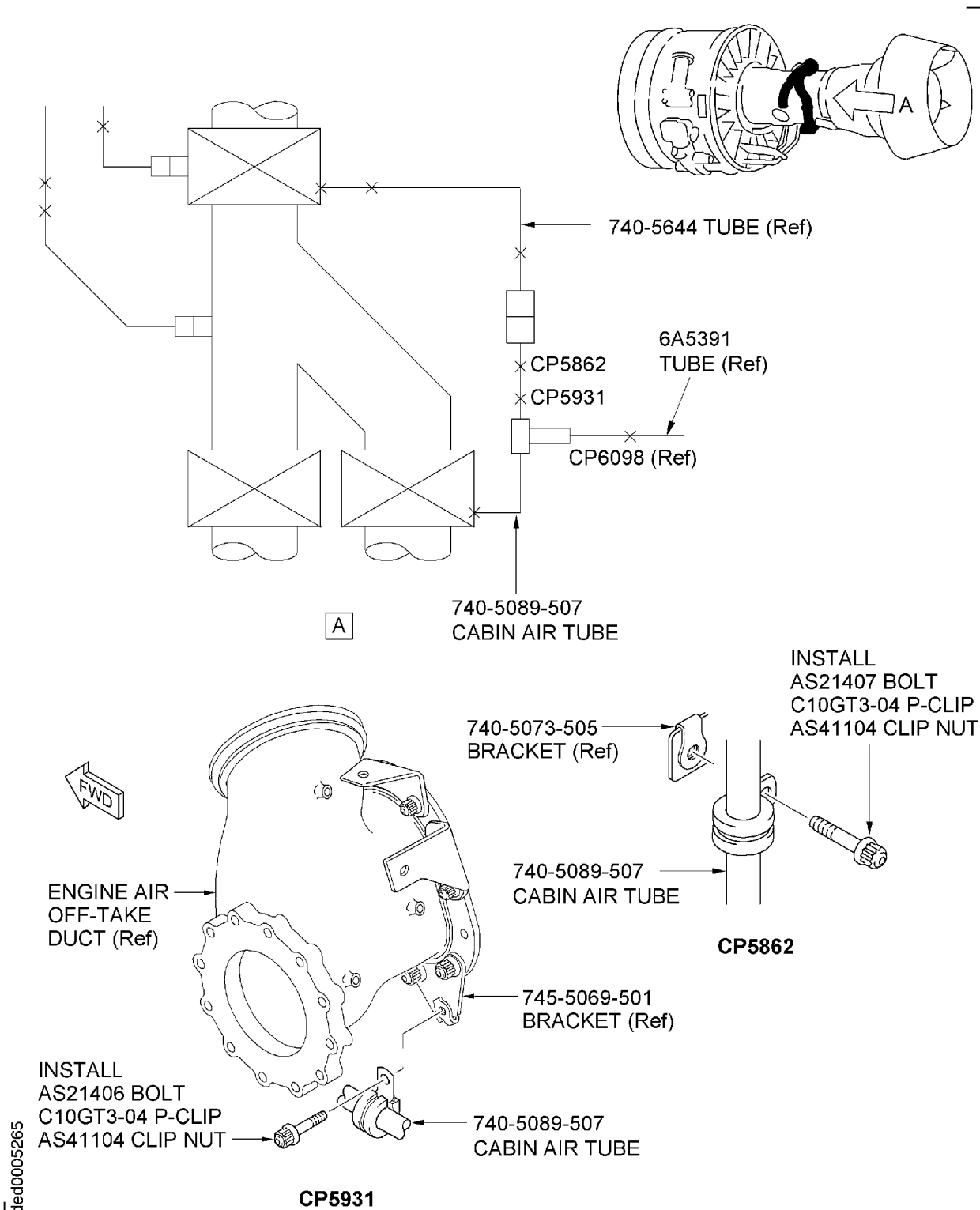
Not subject to the EAR per 15 C.F.R. Chapter 1, Part 734.3(b)(3).



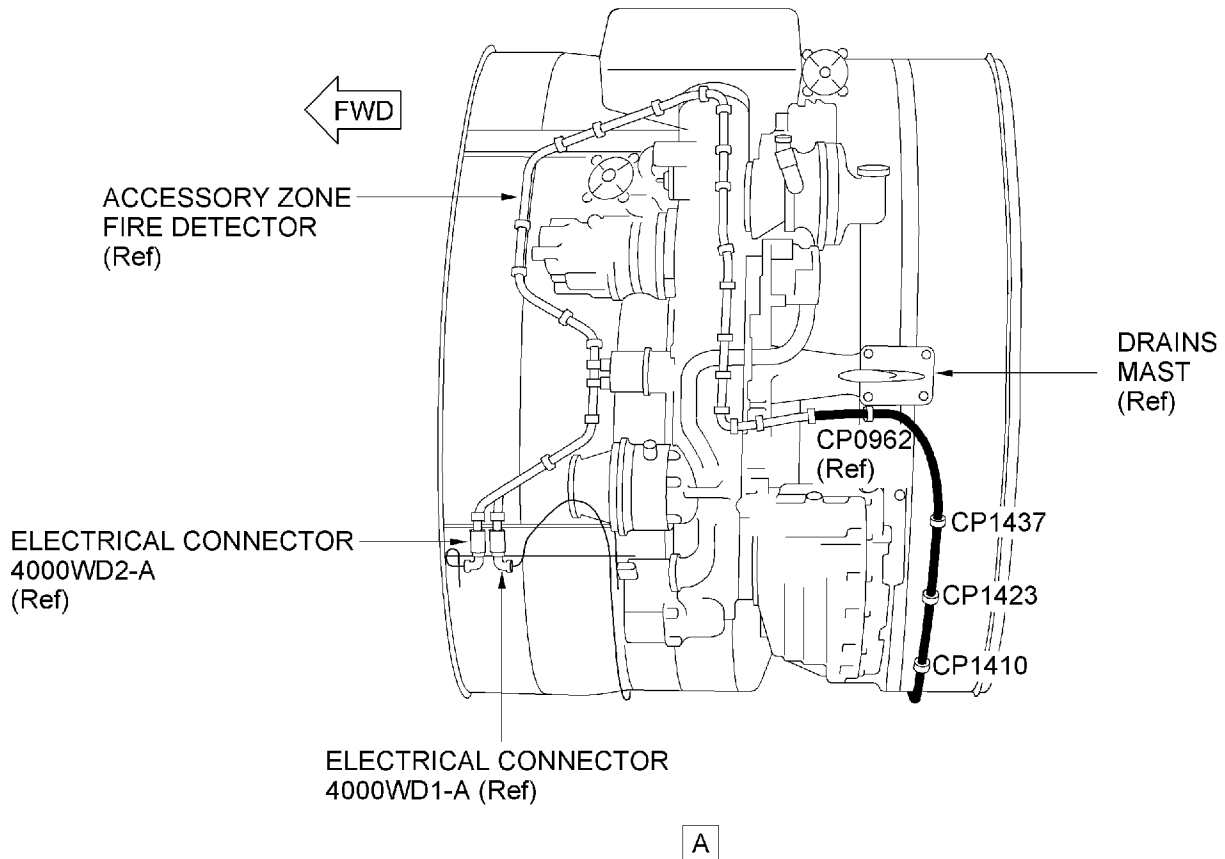
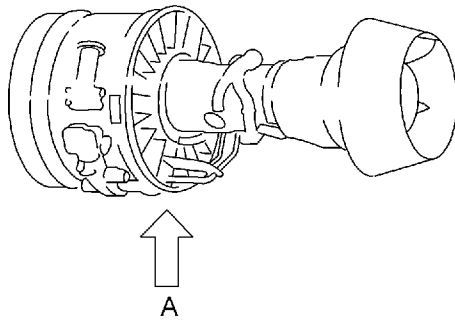
POST SB V2500-NAC-71-0145



Removal of the Core Fire Detector
Figure 4

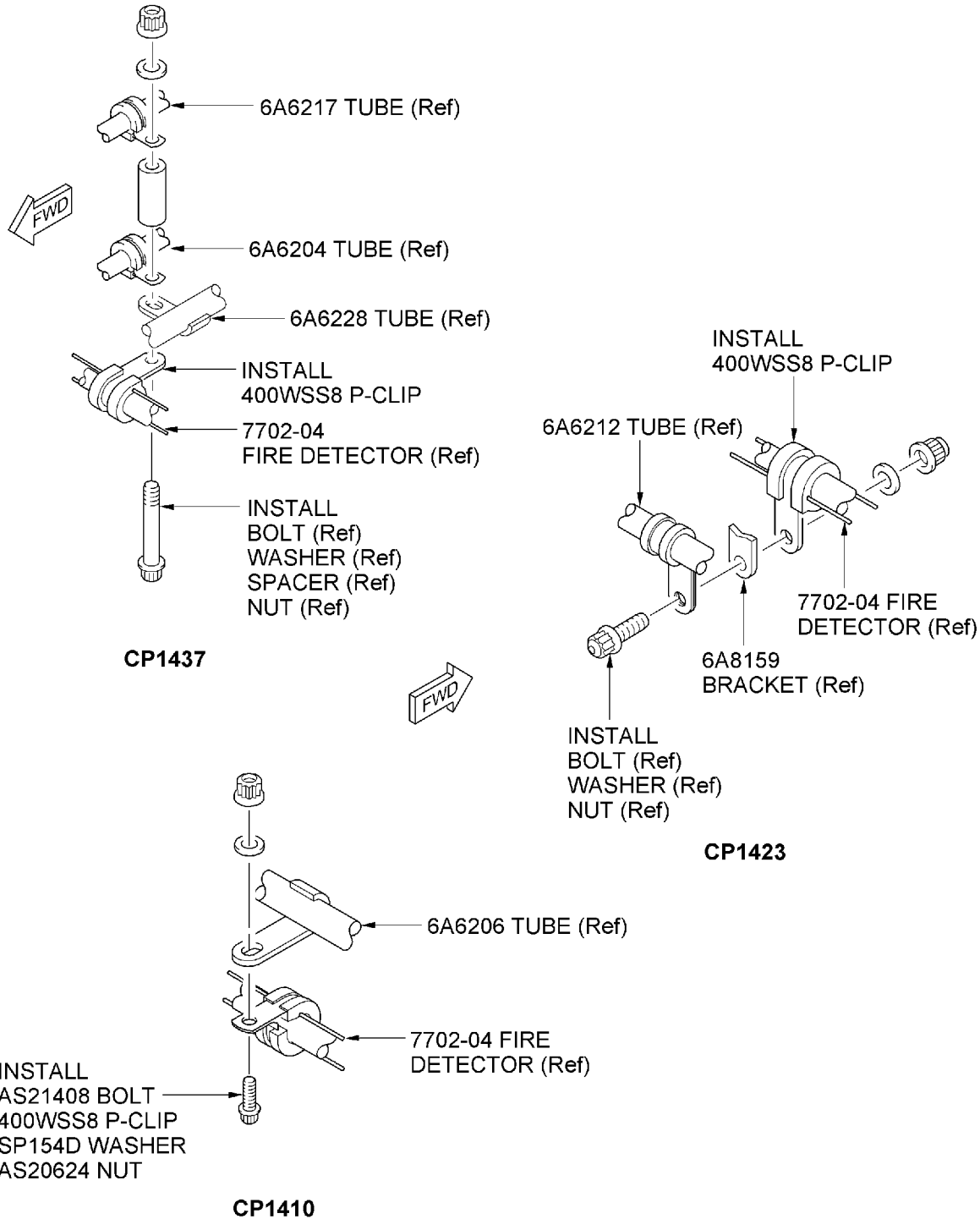


Installation of the Cabin Air Tube
Figure 5



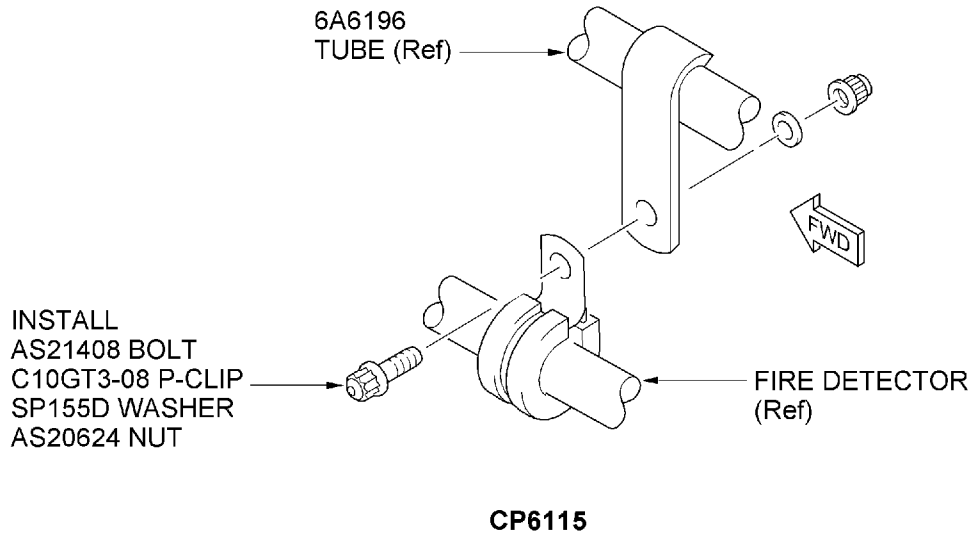
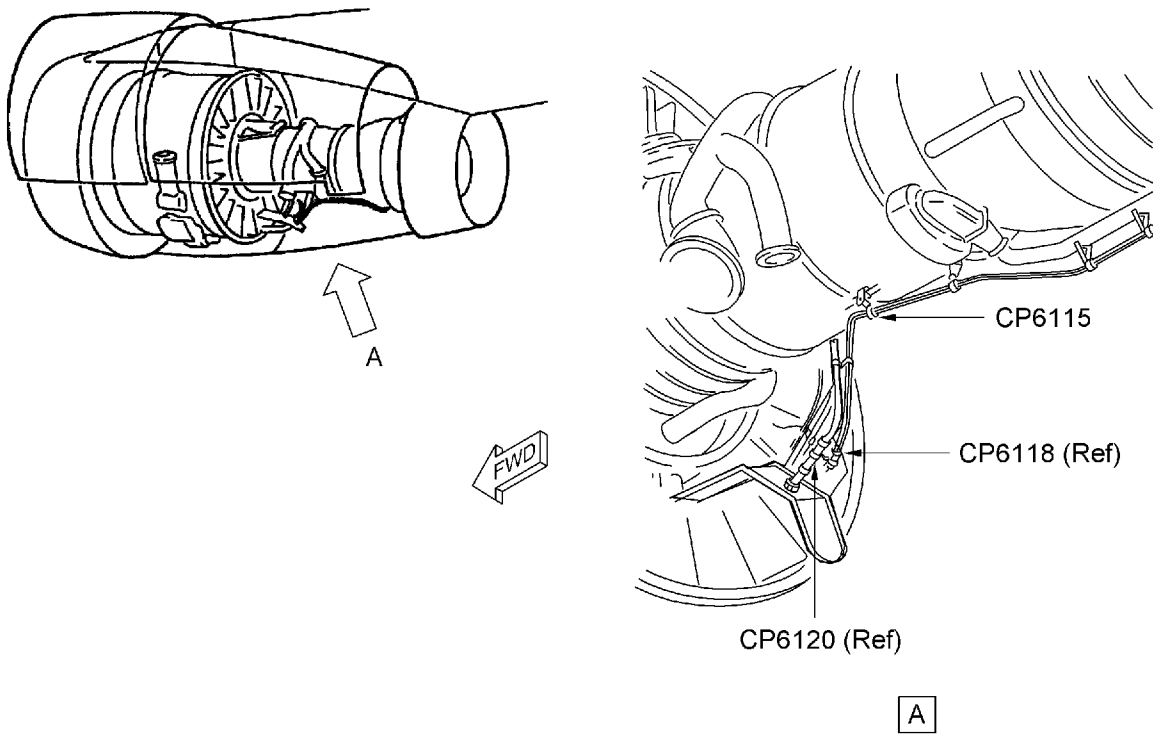
ded0005266

Installation of the 7702-04 Fan Case Fire Detector
Figure 6 Sheet 1 of 2

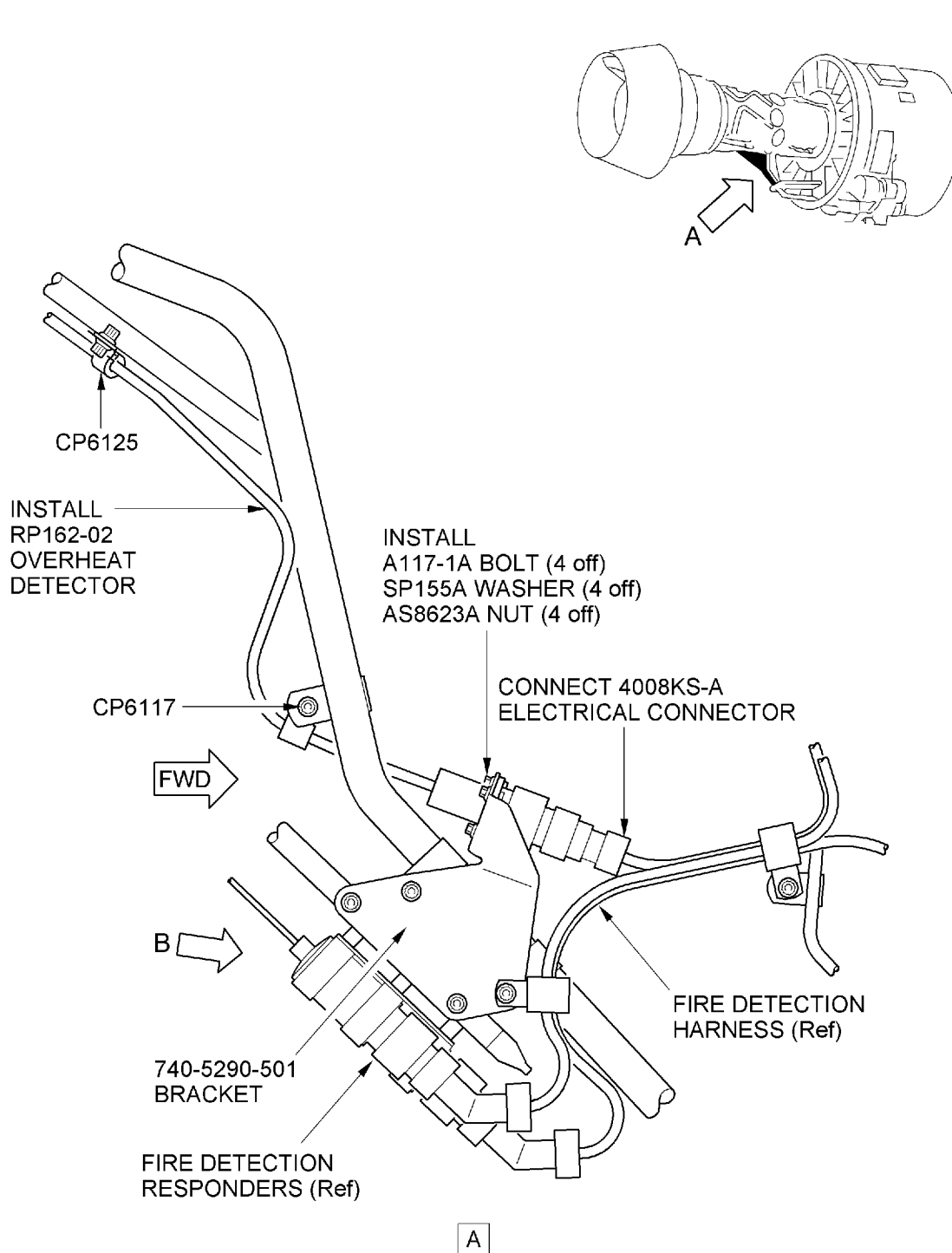


Installation of the 7702-04 Fire Detector
Figure 6 Sheet 2 of 2

ded0005267

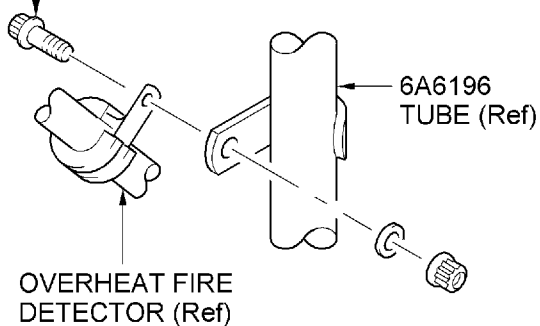


Installation of Clipping Point CP6115 on the Core Fire Detector
Figure 7

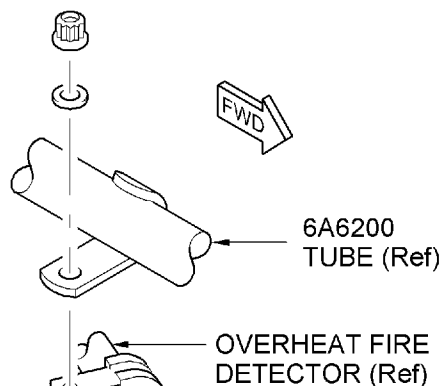


Installation of the Overheat Detector and Bracket
Figure 8 Sheet 1 of 2

INSTALL
AS21408 BOLT
TA0210046FT03 P-CLIP
SP154D WASHER
AS20624 NUT



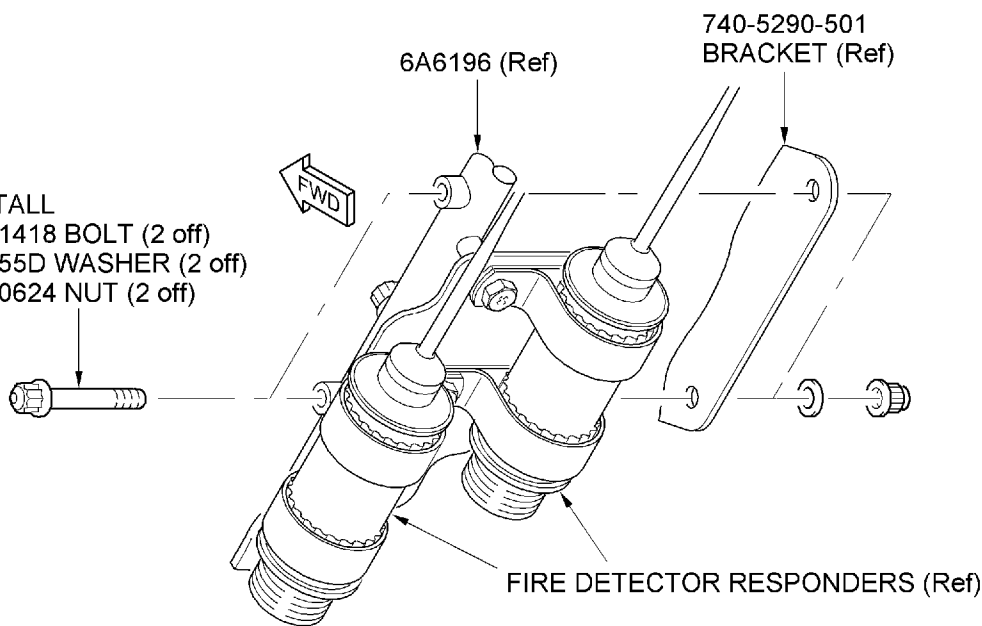
CP6117



INSTALL
AS21408 BOLT
TA0210046FT03 P-CLIP
SP154D WASHER
AS20624 NUT

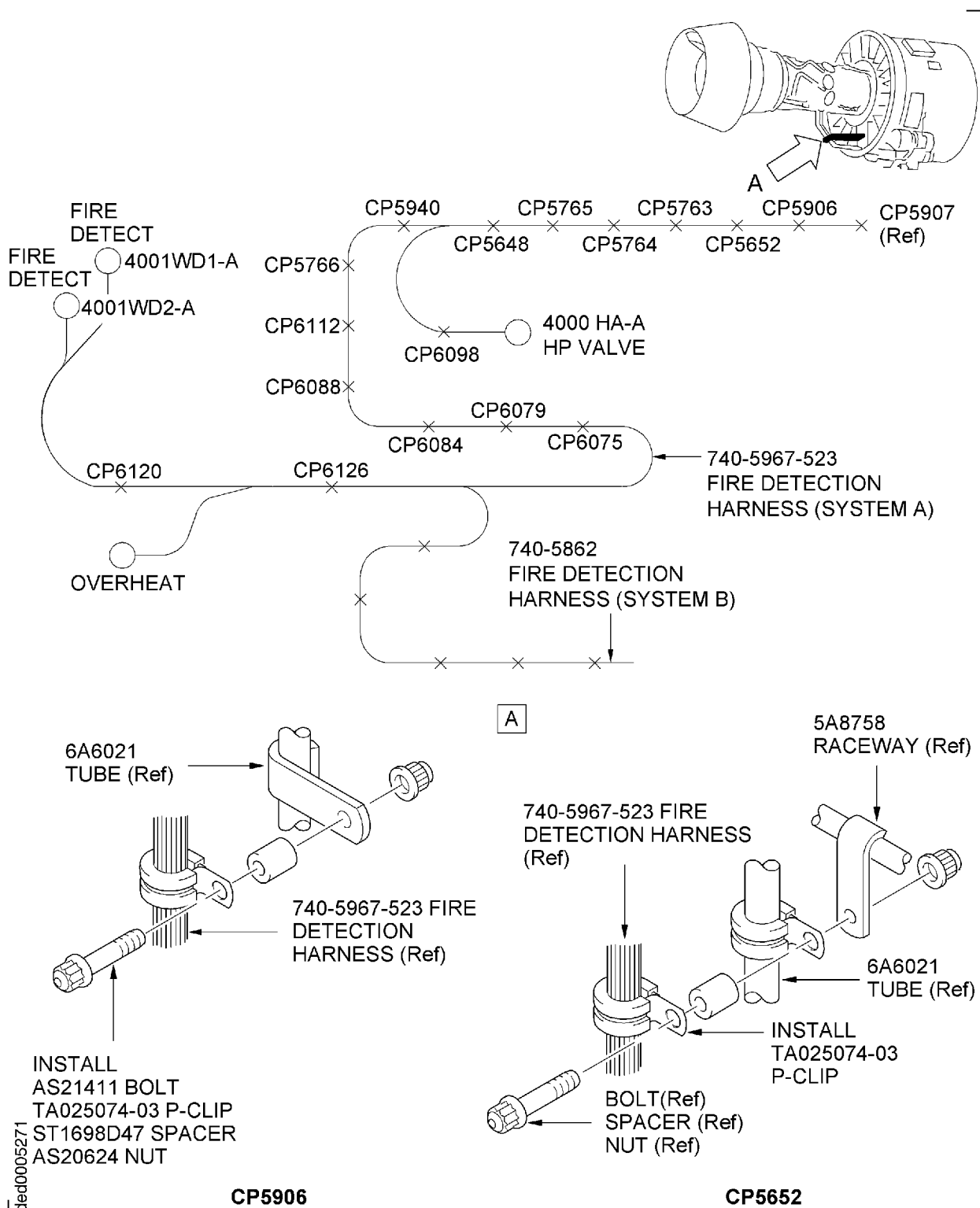
CP6125

INSTALL
AS21418 BOLT (2 off)
SP155D WASHER (2 off)
AS20624 NUT (2 off)

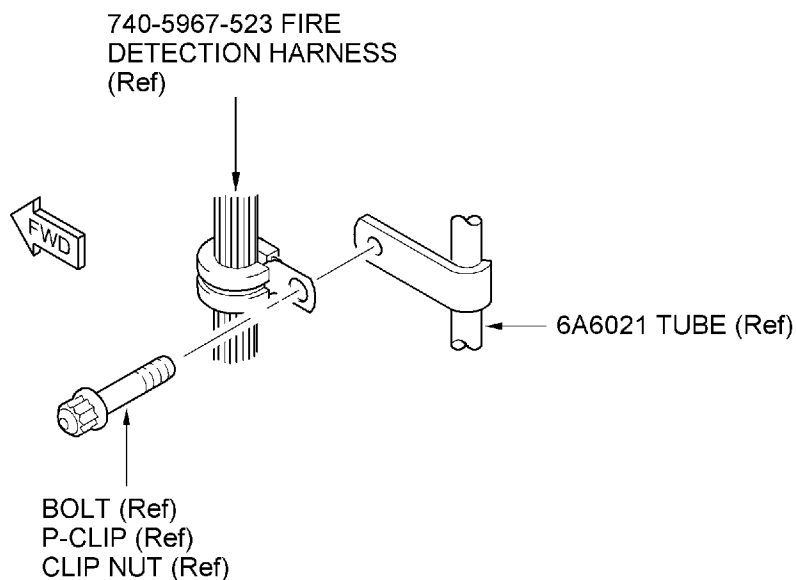


B

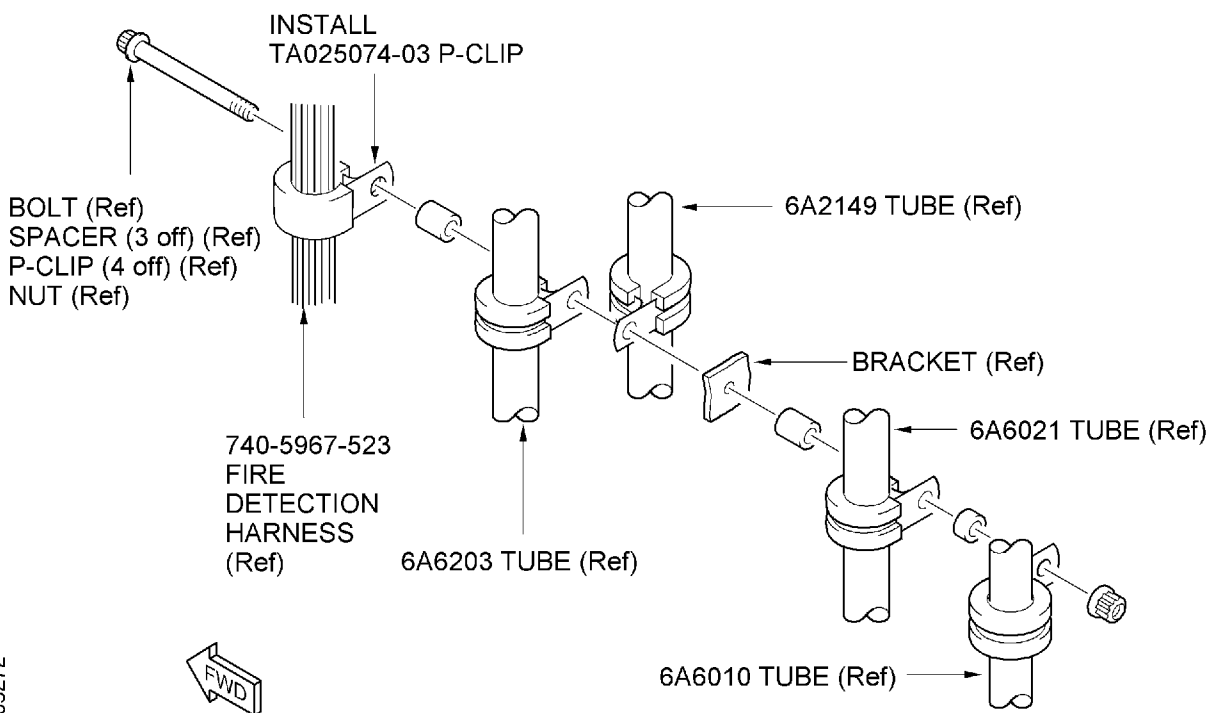
Installation of the Overheat Detector and Bracket
Figure 8 Sheet 2 of 2



Installation of the Fire Detection Harness (System A)
Figure 9 Sheet 1 of 6

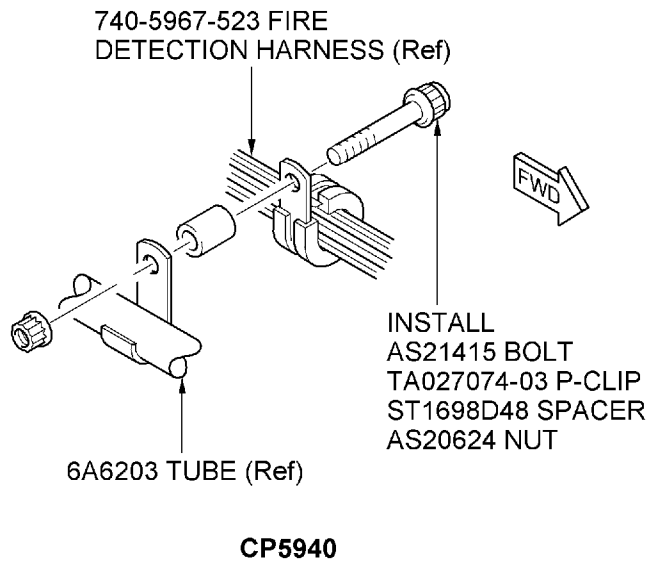
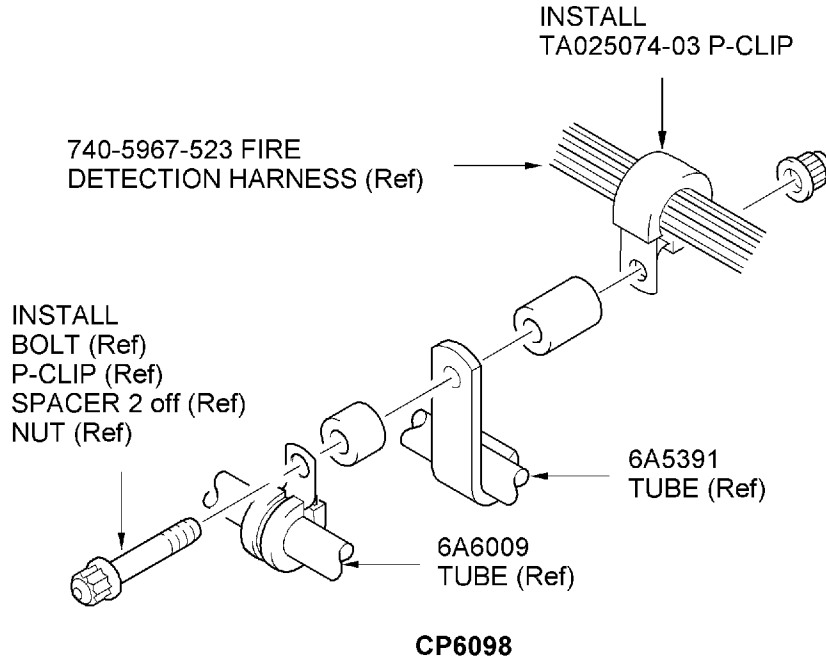


CP5763,CP5764 and CP5765



CP5648

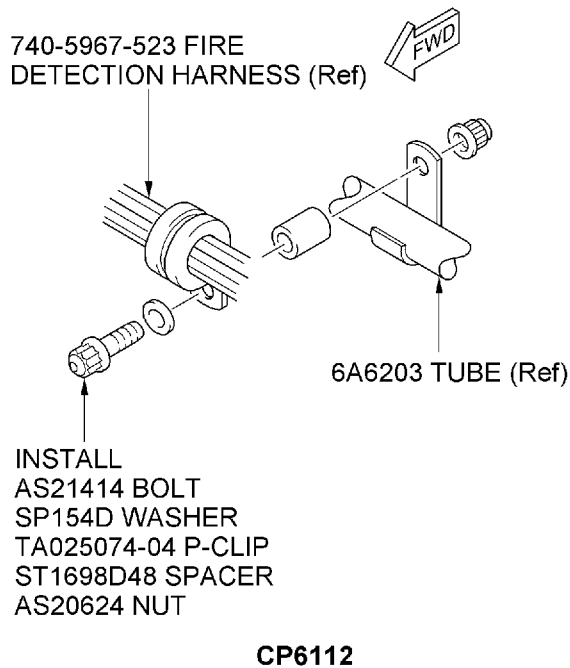
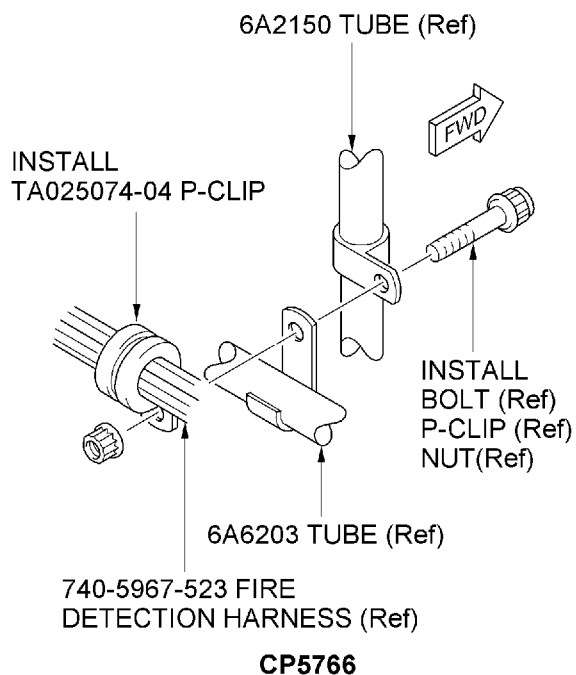
Installation of the Fire Detection Harness (System A)
Figure 9 Sheet 2 of 6



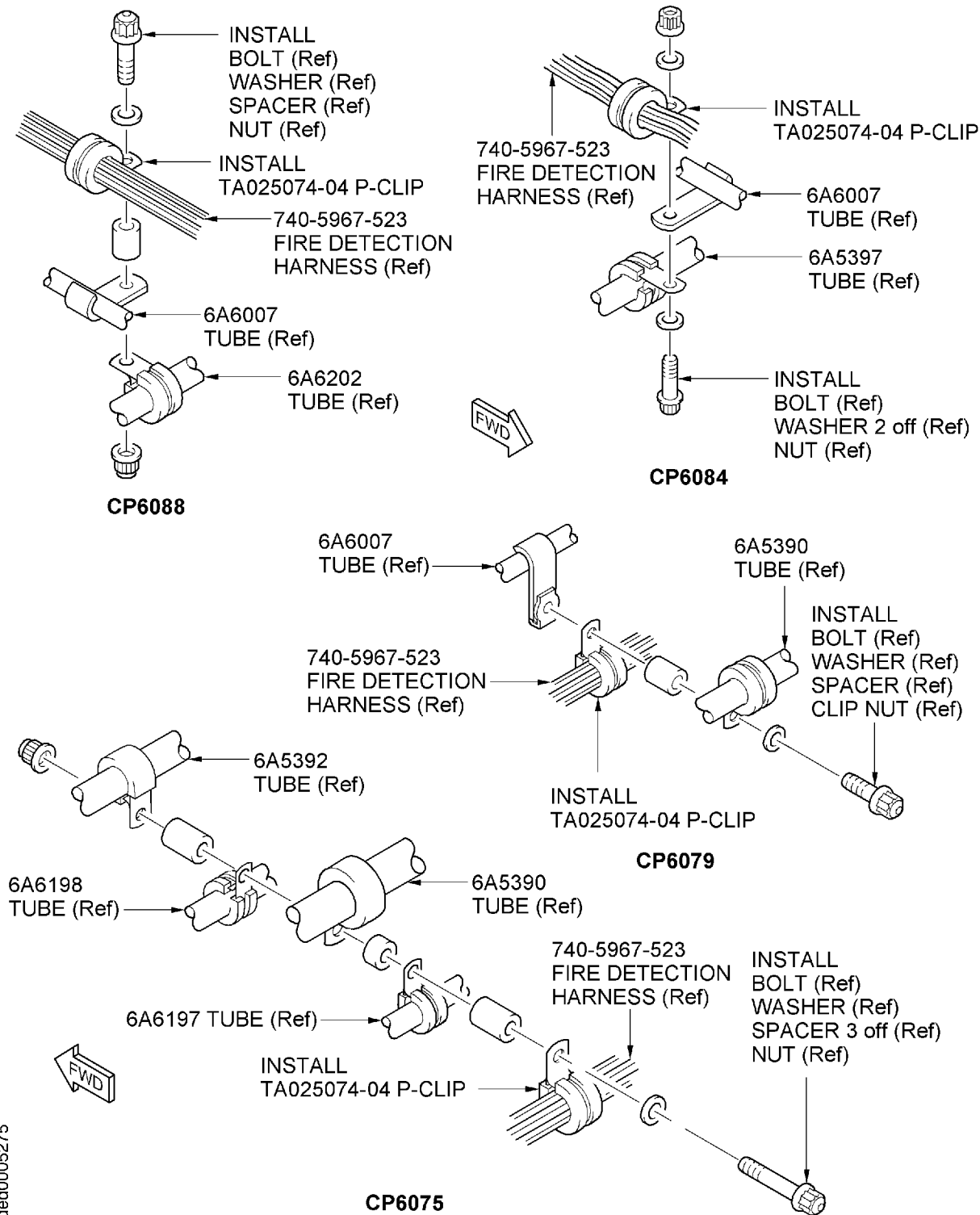
Installation of the Fire Detection Harness (System A)
Figure 9 Sheet 3 of 6

ded0005273

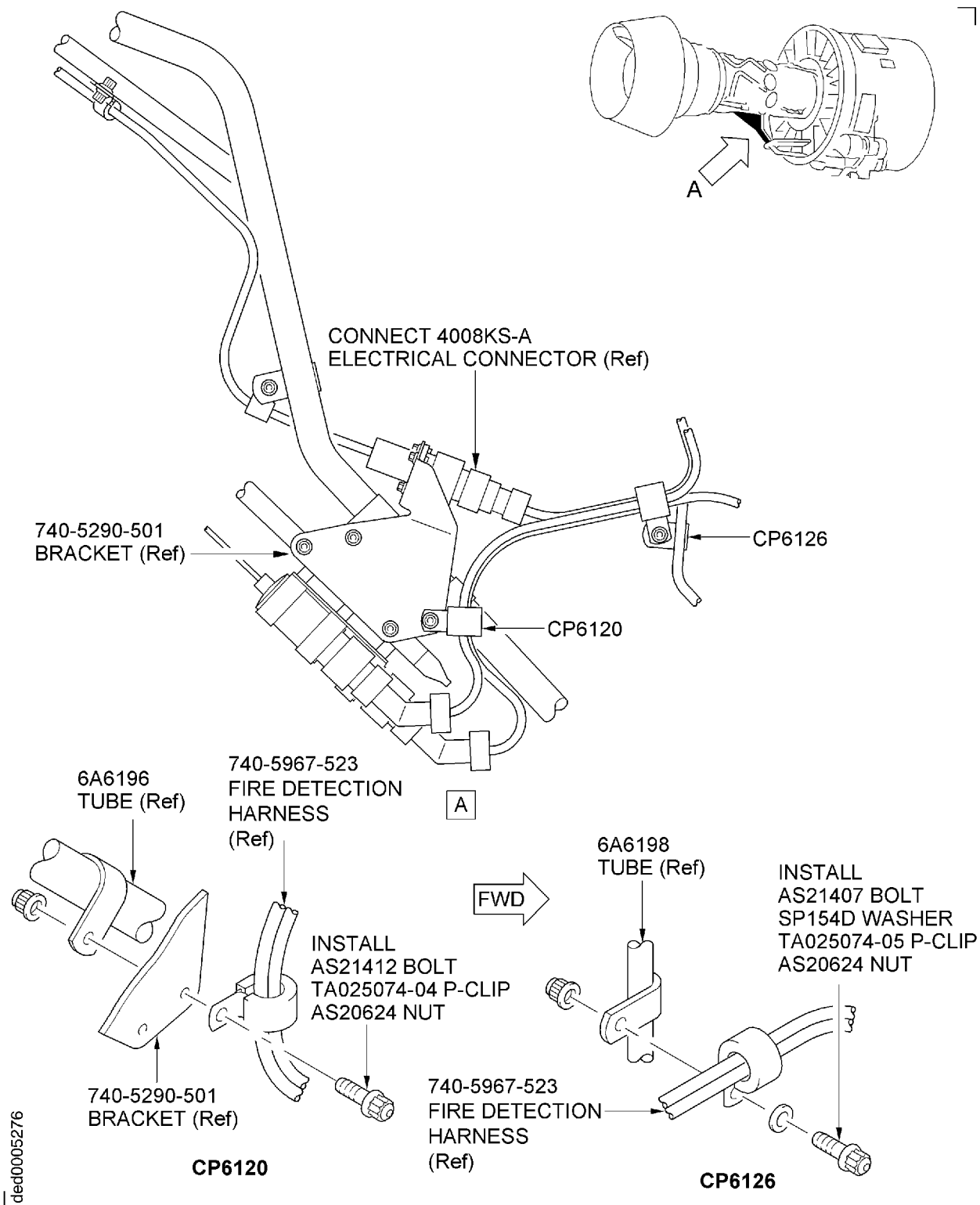
v2500-nac-71-0272_14.iso



Partial Installation of the Fire Detection Harness (System A)
Figure 9 Sheet 4 of 6



Partial Installation of the Fire Detection Harness (System A)
Figure 9 Sheet 5 of 6



Partial Installation of the Fire Detection Harness (System A)
Figure 9 Sheet 6 of 6

NACELLE – ENGINE BUILD UNIT (EBU) – REPLACEMENT AND REROUTING OF SEVERAL EBU SYSTEMS
TO ACCOMMODATE THE REROUTING OF THE OIL SCAVENGE TUBES

SUPPLEMENT – PRICES AND AVAILABILITY

The prices if shown are for estimating purposes only and as such are given in good faith, without commercial liability for advanced planning purposes only. Refer to IAE Spares and/or current price catalogue for current prices.

1. Modification Kit:

Not applicable.

2. New Production Parts:

Part No.	Qty	Unit Price US Dollars
740-5089-507	1	Price supplied on request
7702-04	1	Price supplied on request
RP162-02	1	Price supplied on request
740-5967-523	1	Price supplied on request
400WSS8	14	Price supplied on request
TA025074-03	5	Price supplied on request
TA025074-04	7	Price supplied on request
TA025074-05	1	Price supplied on request
C10GT3-04	2	Price supplied on request
C10GT3-08	1	Price supplied on request
TA0210046FT03	2	Price supplied on request
AS21406	1	Price supplied on request
AS21407	1	Price supplied on request
AS21408	4	Price supplied on request
AS21411	1	Price supplied on request
AS21412	1	Price supplied on request
AS21414	1	Price supplied on request
AS21415	1	Price supplied on request
AS20624	21	Price supplied on request
AS41104	2	Price supplied on request
SP154D	4	Price supplied on request
SP155D	1	Price supplied on request
ST1698D47	2	Price supplied on request
ST1698D48	1	Price supplied on request
740-5286-501	1	Price supplied on request