

**International  
Aero Engines**

V2500 Propulsion System — Nacelle

# SERVICE BULLETIN

Date: February 20, 1997

Subject: Transmittal of Revision 1 to Service Bulletin Number V2500-NAC-78-0038

Service Bulletin Revision History:

<u>Event</u>	<u>Date</u>
Basic Issue	Oct. 01/95
Revision 1	Feb. 20/97

Reasons for Issuance of Revision

(1) To replace the illustration in Figure 1..

Effect on Past Compliance

(1) None.

List of Effective Pages:

<u>Page No.</u>	<u>Rev. No.</u>	<u>Date</u>
1	1	Feb. 20/97
2 thru 7	Basic	Oct. 01/95
8	1	Feb. 20/97
9 and 10	Basic	Oct. 01/95

**V2500-NAC-78-0038**

Transmittal

Page 1 of 1



**International  
Aero Engines**

V2500 Propulsion System — Nacelle

# **SERVICE BULLETIN**

**NACELLE - EXHAUST - THRUST REVERSER No. 4  
HINGE WASHERS -REPLACEMENT OF**

**MODEL APPLICATION**

**V2500-A1**

**BULLETIN INDEX LOCATOR**

**78-32-00**

**Compliance Category Code**

**4**

**Internal Reference No.**

**BC/RJ 89VN094**

**October 1, 1995**

**Revision 1 - February 20, 1997**

**V2500-NAC-78-0038**

**Page 1 of 10**



**International  
Aero Engines**

V2500 Propulsion System — Nacelle

# **SERVICE BULLETIN**

NOTE:

This Service Bulletin is issued for part number progression history only. It is not intended to be incorporated or kit parts ordered from the manufacturer. The intent of this modification is accomplished by incorporation of Service Bulletins V2500-NAC-78-0063 and V2500-NAC-78-0082

## **1. Planning Information**

### **A. Effectivity**

(1) Airplane: Airbus A320

(2) Nacelle: V2500-A1

(a) The intent of this Service Bulletin was incorporated at the manufacturer on Thrust Reverser Units Serial Nos. 106, and on.

(b) The following Thrust Reversers were not modified at the manufacturer. They can be modified by incorporating this Service Bulletin using Kit V2578016-551

TR  
Serial Number  
6 thru 105

October 1, 1995

**V2500-NAC-78-0038**

Page 2



**International  
Aero Engines**

V2500 Propulsion System — Nacelle

# **SERVICE BULLETIN**

## **B. Reason**

### **(1) Condition**

The existing No. 4 hinge bolt exposed thread length is too short to allow proper installation.

### **(2) Background**

Not applicable.

### **(3) Objective**

To maintain thrust reverser reliability and increase maintainability.

### **(4) Substantiation**

This modification was satisfactorily fitted to a production unit.

### **(5) Impact of Bulletin on Workshop Procedures:**

Removal/Installation	Affected
Disassembly/Assembly	Affected
Cleaning	Not Affected
Inspection/Repair	Not Affected
Repair	Not Affected
Testing	Not Affected

### **(6) Supplemental Information**

None

October 1, 1995

**V2500-NAC-78-0038**

Page 3



International  
Aero Engines

V2500 Propulsion System — Nacelle

# SERVICE BULLETIN

## C. Description

The change introduced by this Bulletin is as follows:

Replace the AN960C1016 washer under the bolt head with VN936NP8C washer and add another S700W0131R8L20 washer under the new VN936NP8C washer.

## D. Approval

The part number changes and/or part modifications described in Paragraphs 2 and 3 of this Service Bulletin have been shown to comply with the applicable Federal Aviation Regulations and are FAA approved for the equipment model(s) listed.

## E. Compliance

### Category 4

Accomplish at the first visit of the Nacelle or Nacelle Component to a maintenance base capable of compliance with the accomplishment instructions regardless of the planned maintenance action for the Nacelle or Nacelle Component.

## F. Manpower

Estimated Manhours to incorporate the full intent of this Bulletin:

### VENUE

### ESTIMATED MANHOURS

#### (1) In Service

(a) To gain access	Not Applicable
(b) To embody	1.0 M/Hrs
(c) To return Nacelle to service	Not Applicable

Total	1.0 M/Hrs
-------	-----------

October 1, 1995

V2500-NAC-78-0038

Page 4



International  
Aero Engines

V2500 Propulsion System — Nacelle

# SERVICE BULLETIN

## G. Material Cost and Availability

The parts to accomplish this Service Bulletin, Kit V2578038-551, are not available from the manufacturer. See Kit and part information in Service Bulletins V2500-NAC-78-0063 and V2500-NAC-78-0082.

## H. Tooling Cost and Availability

None Required

## I. Weight and Balance

(1) Weight change ..... None

(2) Moment arm ..... No effect

(3) Datum ..... Engine Front Mount  
Centerline

..... (Powerplant  
Station PPS 100.00)

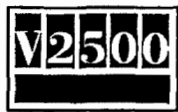
## J. Electrical Load Data

Not Affected

October 1, 1995

V2500-NAC-78-0038

Page 5



**International  
Aero Engines**

V2500 Propulsion System — Nacelle

# **SERVICE BULLETIN**

## **K. References**

A320 Aircraft Maintenance Manual	78-32-01
Service Bulletin V2500-NAC-78-0063	
Service Bulletin V2500-NAC-78-0082	

## **L. Other Publications Affected**

A320 Power Plant Illustrated Parts Catalog	78-32-01
	78-32-02
	78-32-03
	78-32-04
A320 Engine Illustrated Parts Catalog	78-32-01
	78-32-02
	78-32-03
	78-32-04

October 1, 1995

**V2500-NAC-78-0038**

Page 6



**International  
Aero Engines**

V2500 Propulsion System — Nacelle

# **SERVICE BULLETIN**

## **2. Accomplishment Instructions**

### **A. Prerequisite Instructions**

**CAUTION:** Thrust reverser halves must be properly closed and latched before starting this procedure. Damage to hinges may occur if the thrust reverser is not closed and latched.

- (1) Remove the left and right thrust reverser hinge access panel as specified in the A320 Aircraft Maintenance Manual, Chapter 78-32-00.
- (2) Find the No. 4 hinge at the aft end of the thrust reverser. (Refer to Figure 1).

### **B. Rework or Modification Instructions**

- (1) Remove bolt, washers, sleeve, and nut from No. 4 hinge. Discard AN960C1016 washer. (Refer to Figure 1).
- (2) Lubricate S700B1191 bolt with CoMat 10-058 penetrating oil.
- (3) Install S700B1191 bolt, VN936NP8C washer, two S700W0131R8L20 washers, and LCN12-820 nut.
- (4) Torque nut to 480 -690 lb-in. (54.2 -78.0 N.m).
- (5) Install MS24665-304 cotter pin in bolt.

### **C. Post-requisite Instructions**

- (1) Install the hinge access panels as specified in A320 Aircraft Maintenance Manual, Chapter 78-32-00.

### **D. Recording Instructions**

- (1) Write on the thrust reverser data plate that this Service Bulletin has been incorporated. A record of accomplishment is required.

October 1, 1995

**V2500-NAC-78-0038**

Page 7

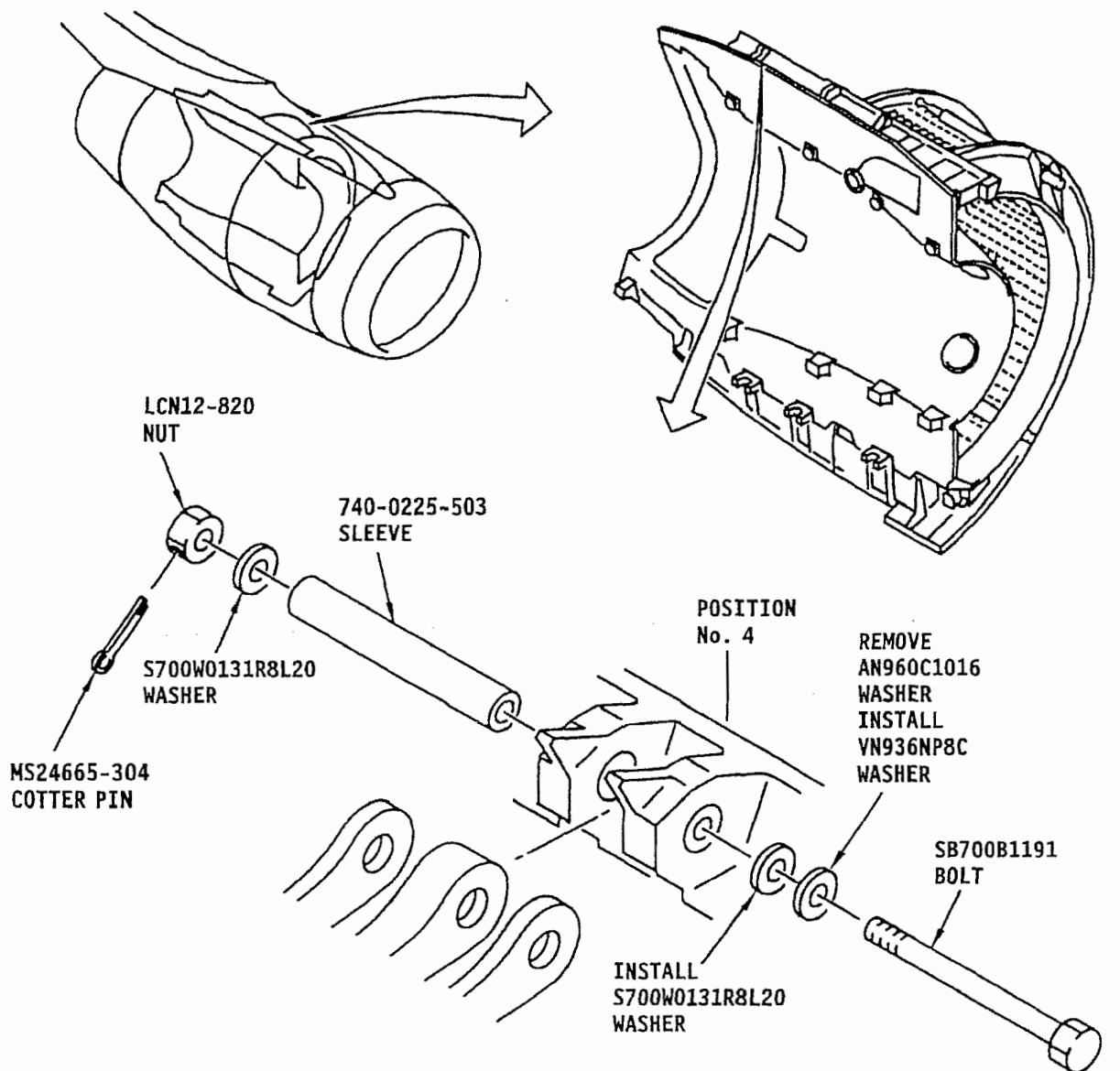




International  
Aero Engines

V2500 Propulsion System — Nacelle

# SERVICE BULLETIN



VSB266

No. 4 Hinge Modification -After Condition  
Figure 1

October 1, 1995  
Revision 1 - February 20, 1997

V2500-NAC-78-0038

Page 8



**International  
Aero Engines**

V2500 Propulsion System — Nacelle

# SERVICE BULLETIN

## 3. Material Information

NEW PART NO. (ATA NO)	EST'D UNIT QTY PRICE (\$)	KEYWORD	OLD PART NO. (IPC NO.)	INSTR/ DISPOS
--------------------------	------------------------------	---------	---------------------------	------------------

Applicability: For each V2500 Nacelle to incorporate this Bulletin

### A. Kits associated with this Bulletin:

V2578038-551	1	Kit		(A)
Consisting of:				

VN936NP8C	2	Washer		
S700W0131R8L20	2	Washer		(F)

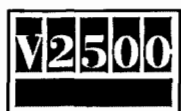
### B. Parts affected by this Bulletin:

VN936NP8C	1	Washer	AN960C1016	(A)(C)
(78-32-01)			(01-045)	(S1)
(78-32-02)			(01-045)	
(78-32-03)			(01-045)	
(78-32-04)			(01-045)	
S700W0131R8L20	2	Washer	S700W0131R8L20	(A)(C)
(78-32-01)			(01-040)	(1D)
(78-32-02)			(01-040)	
(78-32-03)			(01-040)	
(78-32-04)			(01-040)	

October 1, 1995

**V2500-NAC-78-0038**

Page 9



International  
Aero Engines

V2500 Propulsion System — Nacelle

# SERVICE BULLETIN

## C. Instruction/Disposition Code Statements

- (A) Kit is not available.
- (C) New part is currently available for sale.
- (F) New part supplied to replace old part. Old part is not reuseable.
- (1D) Quantity was 1 now is 2
- (S1) New parts coded S1 must replace old parts coded S1 as a complete set.

## D. These materials are to be procured by the Operator or obtained from his stock.

<u>Part Number</u>	<u>Keyword</u>	<u>Qty</u>	<u>Source</u>	<u>Code</u>
CoMat 10-058	Lubricant	AN	Rocep-Lusol 24 Reidvale St. Glasgow G31 15W Great Britain	K0680

October 1, 1995

V2500-NAC-78-0038

Page 10